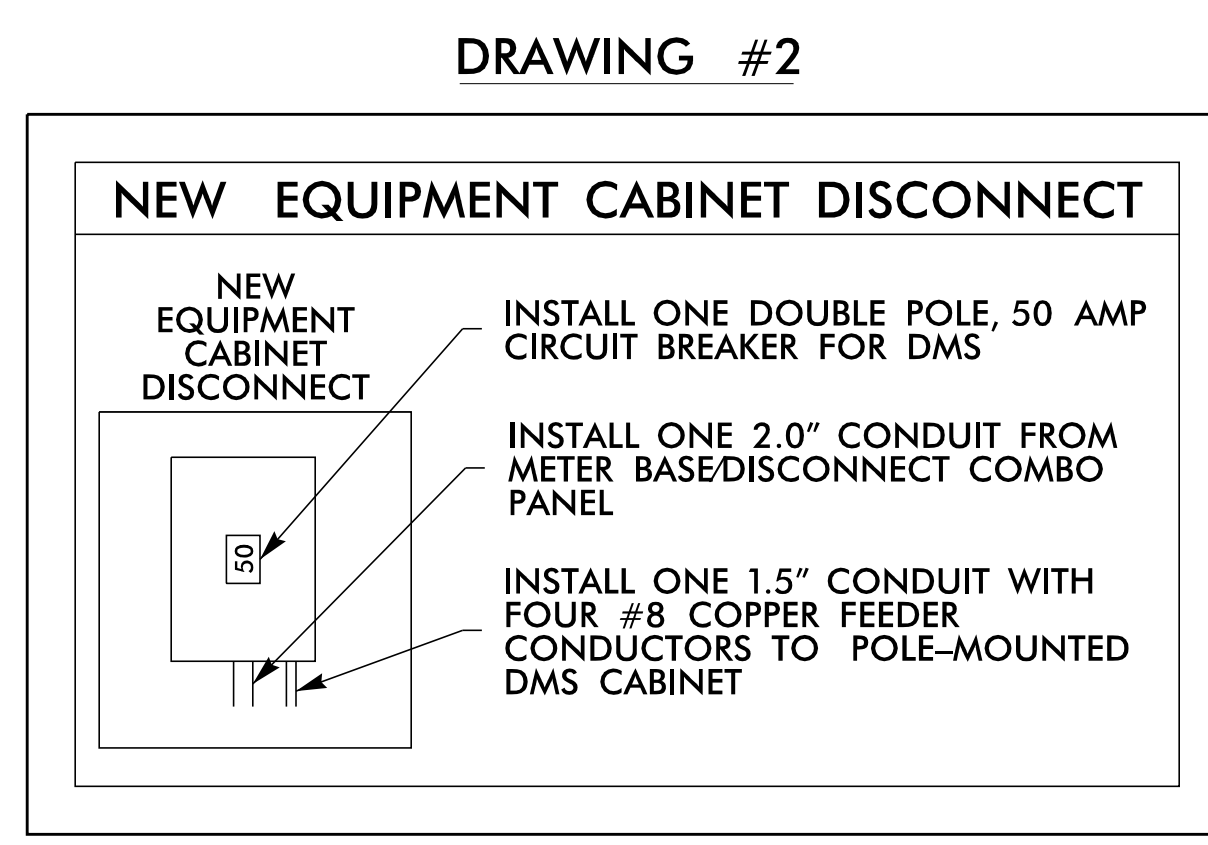
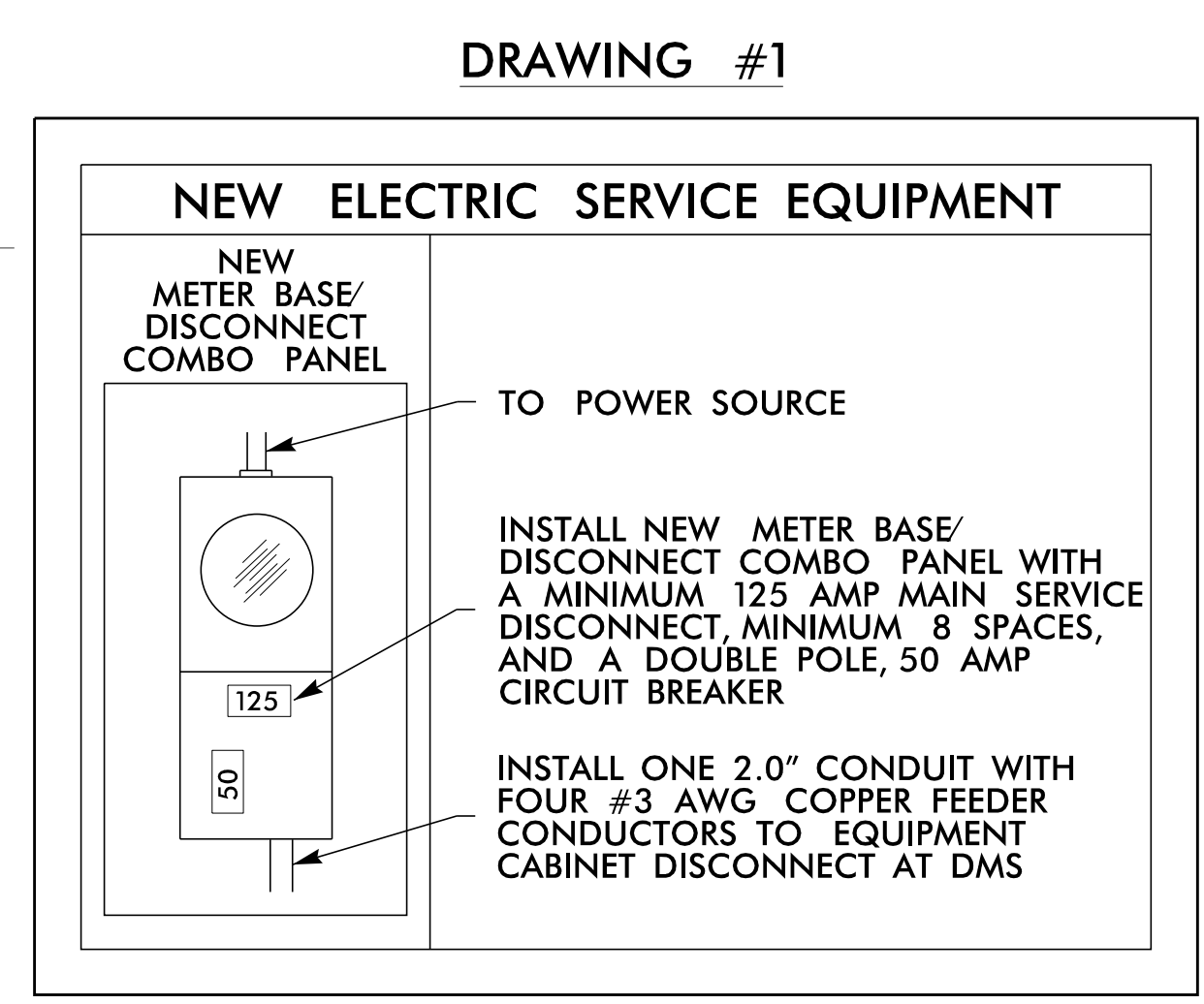
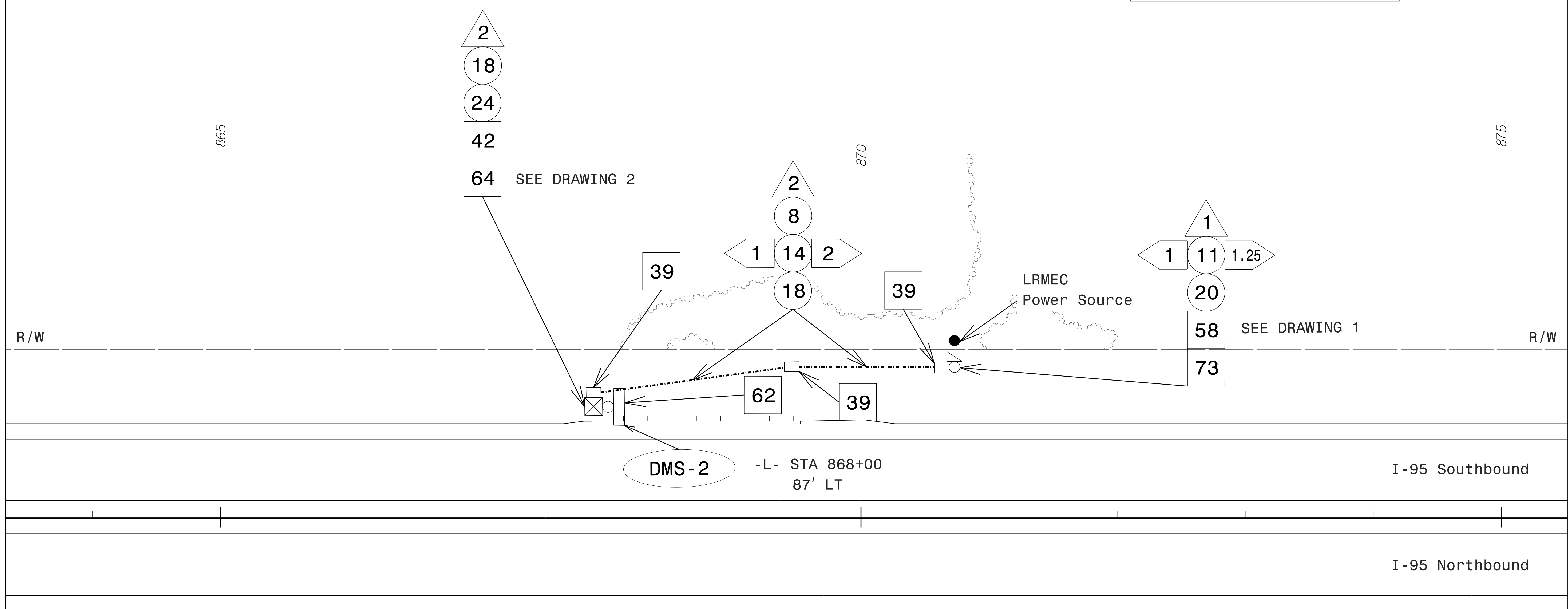
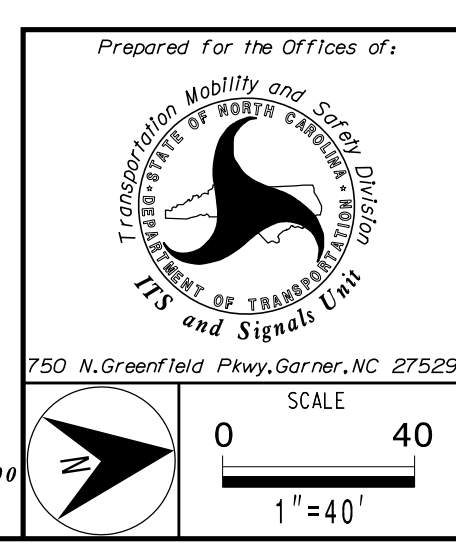


**DMS-2 GPS COORDINATES**  
 34.87632° N  
 78.96285° W



- NOTES:**
- POWER COMPANY CONTACT - LUMBEE RIVER EMC - KEN ROWELL (910) 843-7953
  - REFER TO SHEET 3B-4 FOR GUARDRAIL INFORMATION.
  - MAINTAIN A MINIMUM OF 6 FEET FROM THE EDGE OF PAVEMENT WHEN TRENCHING PARALLEL TO THE ROADWAY.
  - CONTACT DIVISION 6 TRAFFIC ENGINEER FRANK D. WEST, JR. AT (910) 364-0606 TO CONFIRM THE LOCATION OF THE CCTV/DMS.
  - DO NOT INSTALL CONDUIT OR JUNCTION BOXES UNTIL THE PROPOSED LOCATION OF THE CCTV CAMERA OR DMS HAVE BEEN CONFIRMED BY THE DIVISION TRAFFIC ENGINEER.
  - MOUNT THE CCTV CAMERA 45 FEET ABOVE GRADE.
  - MOUNT THE CCTV CAMERA 5 FEET BELOW THE TOP OF THE POLE.



I-95 Southbound DMS-2 (Mile-Marker 36)		SEAL
Division 6	Robeson County	Lumberton
PLAN DATE: March 2022	REVIEWED BY: S.G. Haynie	
PREPARED BY: O. Drobny	REVIEWED BY: J. S. Cole	
REVISIONS	INIT.	DATE
		3/18/2022
SIGNATURE: Steven G. Haynie		DATE: 3/18/2022
CADD Filename:		

3/11/2022  
 R:\ITS\6es\gmp\on\_Sheets\I-5987B\ITS\_psh\_10\_DMS-2.ctb MK36.dgn  
 10:01:26 AM

DOCUMENT NOT CONSIDERED FINAL  
UNLESS ALL SIGNATURES COMPLETED