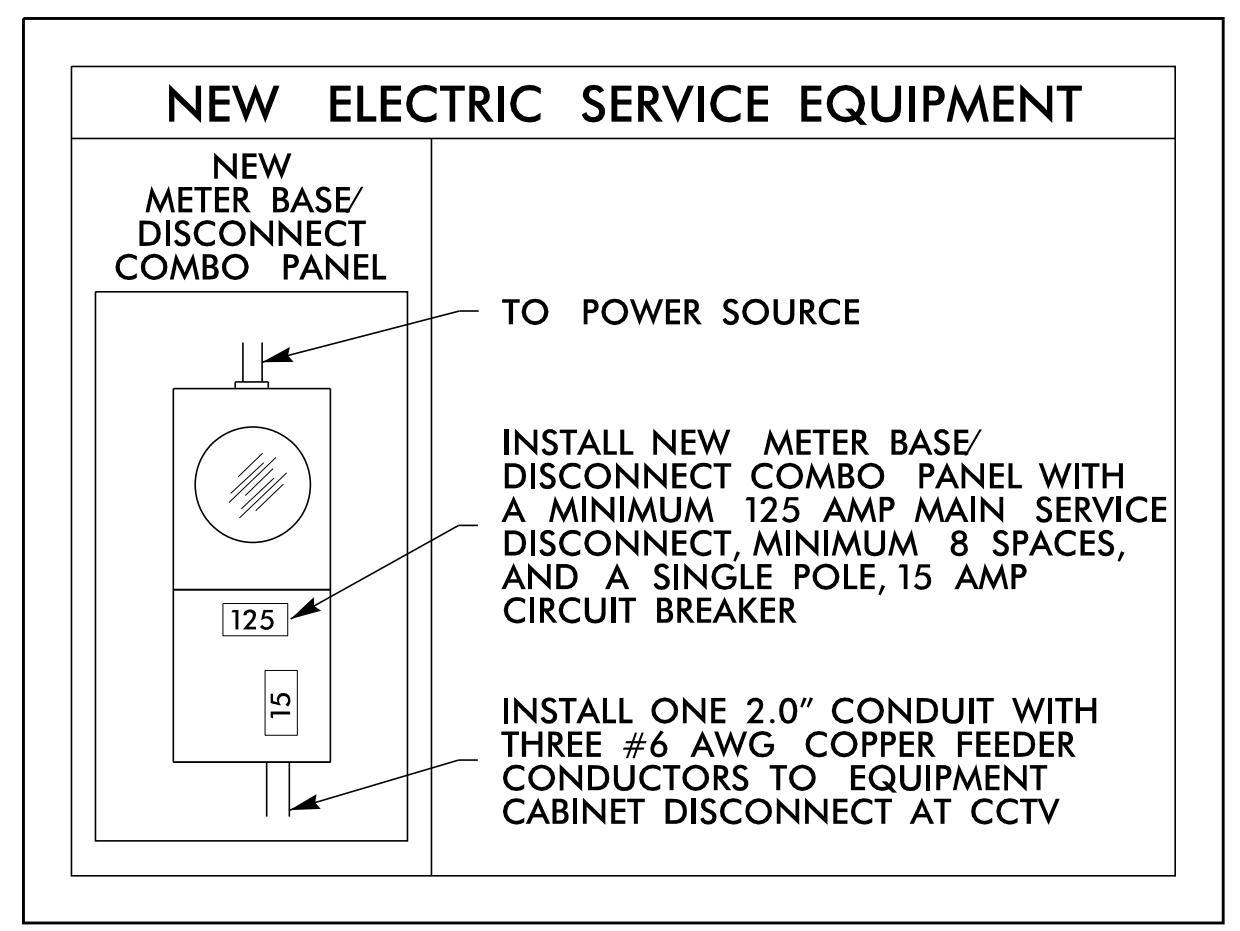
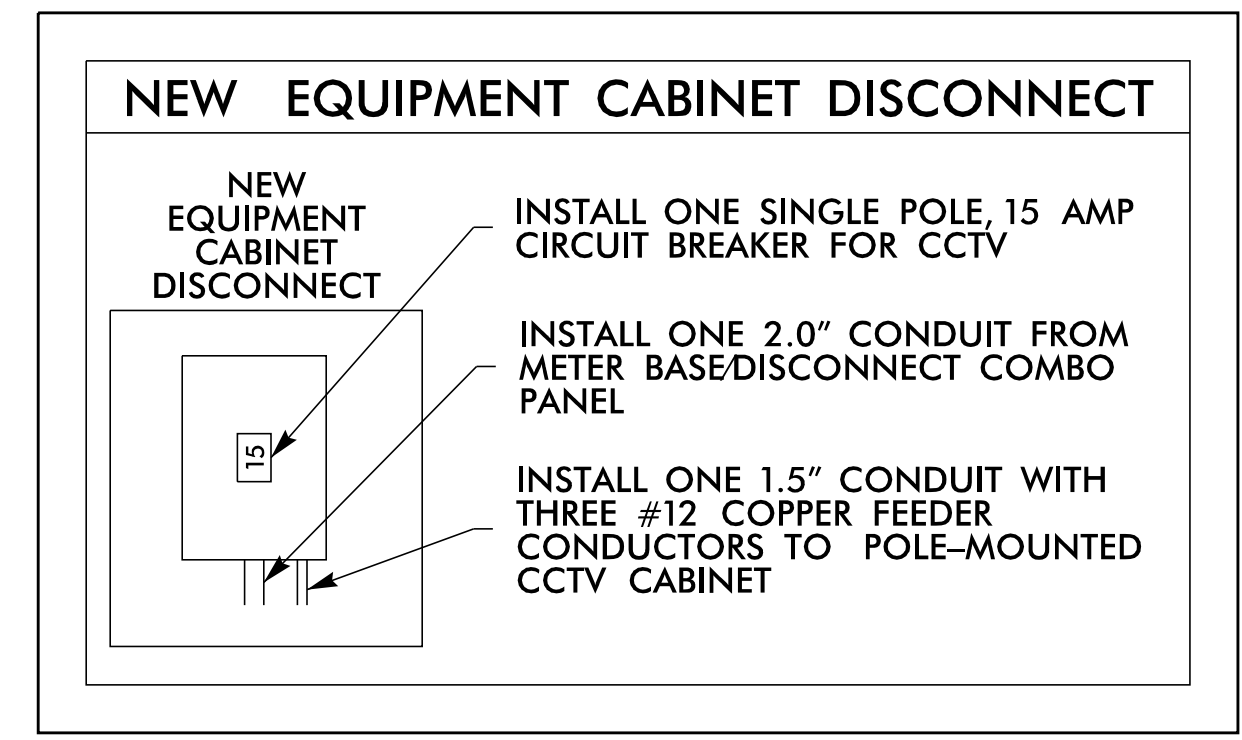


DRAWING #1

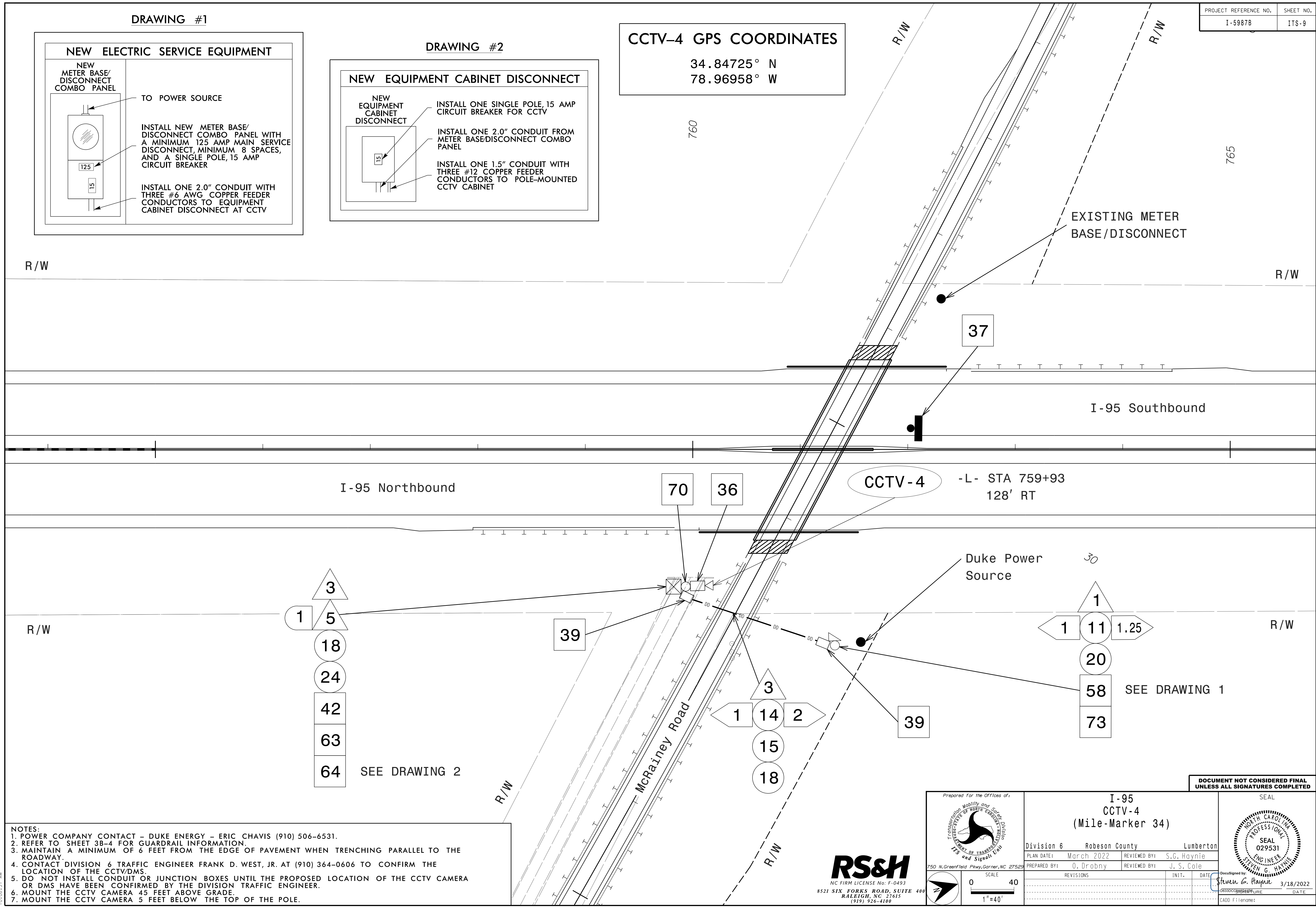


DRAWING #2



CCTV-4 GPS COORDINATES

34.84725° N
78.96958° W



NOTES:

1. POWER COMPANY CONTACT - DUKE ENERGY - ERIC CHAVIS (910) 506-6531.
2. REFER TO SHEET 3B-4 FOR GUARDRAIL INFORMATION.
3. MAINTAIN A MINIMUM OF 6 FEET FROM THE EDGE OF PAVEMENT WHEN TRENCHING PARALLEL TO THE ROADWAY.
4. CONTACT DIVISION 6 TRAFFIC ENGINEER FRANK D. WEST, JR. AT (910) 364-0606 TO CONFIRM THE LOCATION OF THE CCTV/DMS.
5. DO NOT INSTALL CONDUIT OR JUNCTION BOXES UNTIL THE PROPOSED LOCATION OF THE CCTV CAMERA OR DMS HAVE BEEN CONFIRMED BY THE DIVISION TRAFFIC ENGINEER.
6. MOUNT THE CCTV CAMERA 45 FEET ABOVE GRADE.
7. MOUNT THE CCTV CAMERA 5 FEET BELOW THE TOP OF THE POLE.

DOCUMENT NOT CONSIDERED FINAL UNLESS ALL SIGNATURES COMPLETED

NC FIRM LICENSE No: F-0493
8521 SIX FORKS ROAD, SUITE 400
RALEIGH, NC 27615
(919) 926-4100

Prepared For the Offices of:

750 N. Greenfield Parkway, Garner, NC 27529

I-95
CCTV-4
(Mile-Marker 34)

Division 6 Robeson County Lumberton

PLAN DATE: March 2022 REVIEWED BY: S.G. Haynie

PREPARED BY: O. Drobny REVIEWED BY: J. S. Cole

REVISIONS	INIT.	DATE

Scale: 1" = 40'

SEAL

Steven G. Haynie
Professional Engineer
3/18/2022

3/11/2022 10:08:51 AM R:\ITS\6es\gmp\plan_sheets\I-5987B\ITS_pch_09_LMB34.dgn