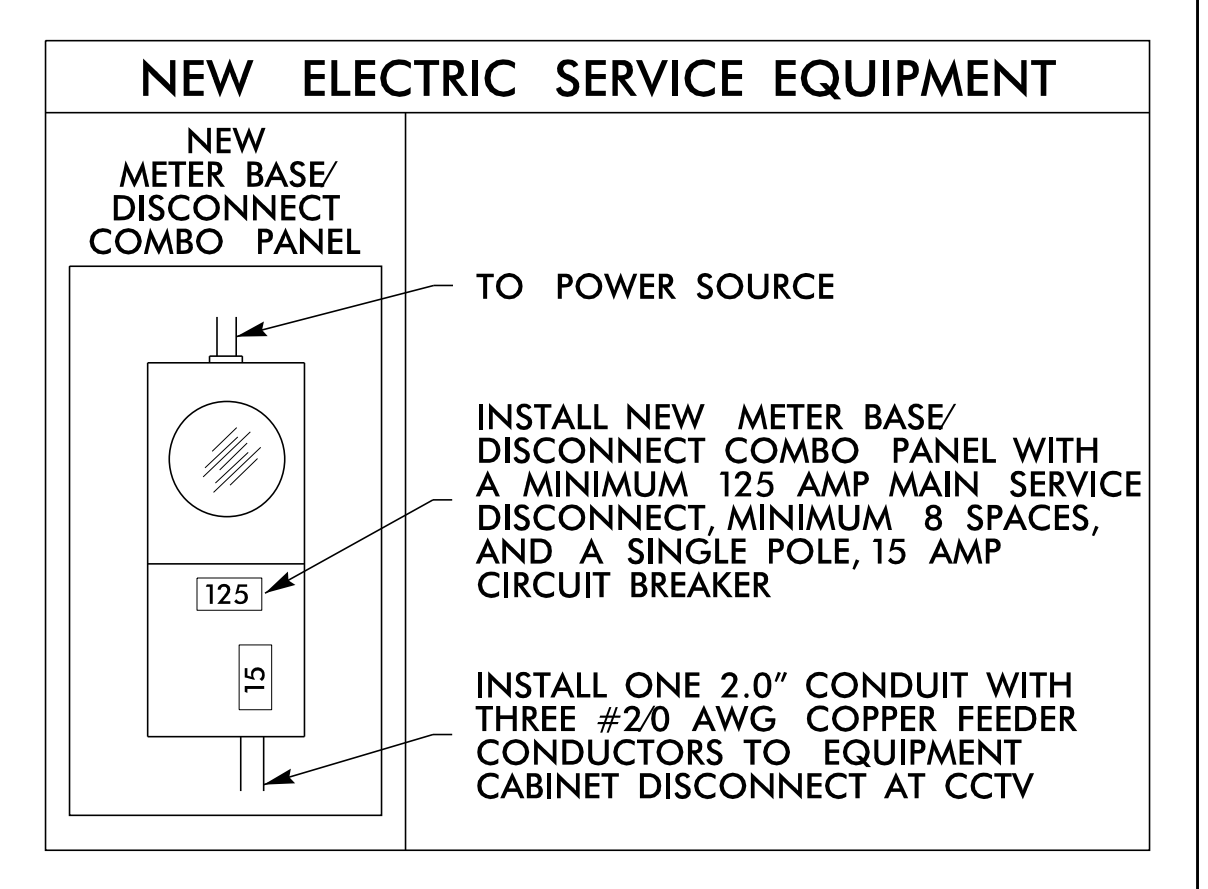
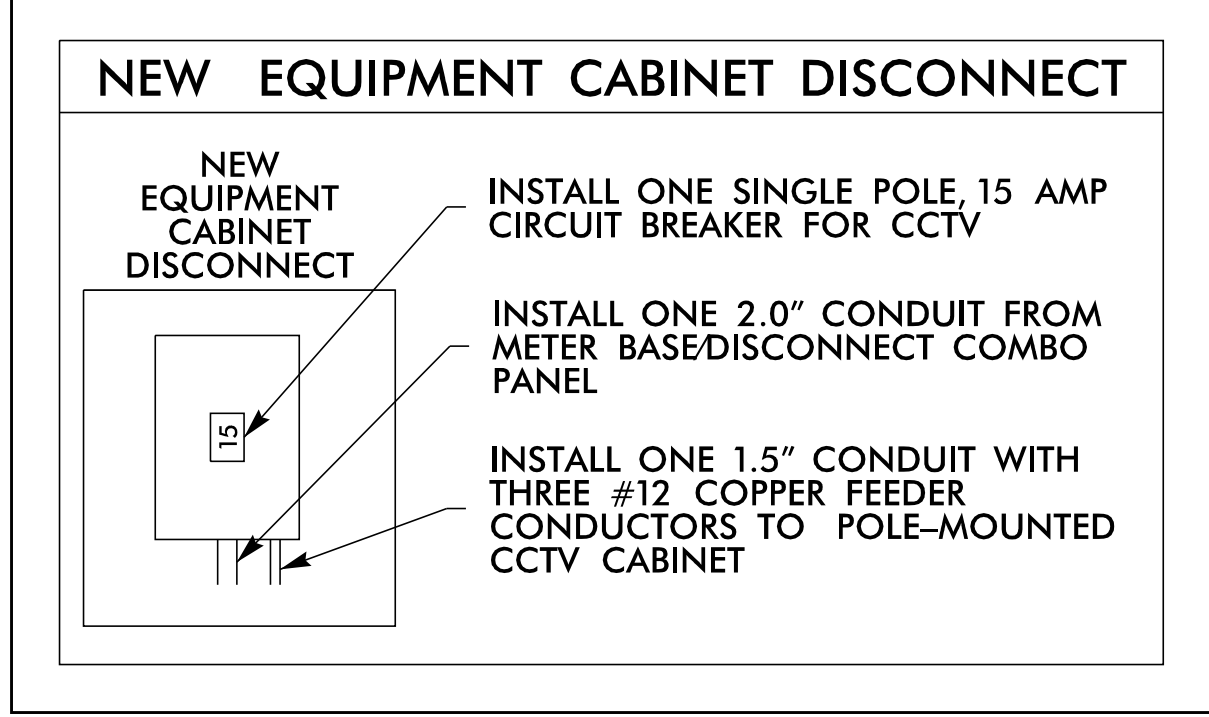


DRAWING #1

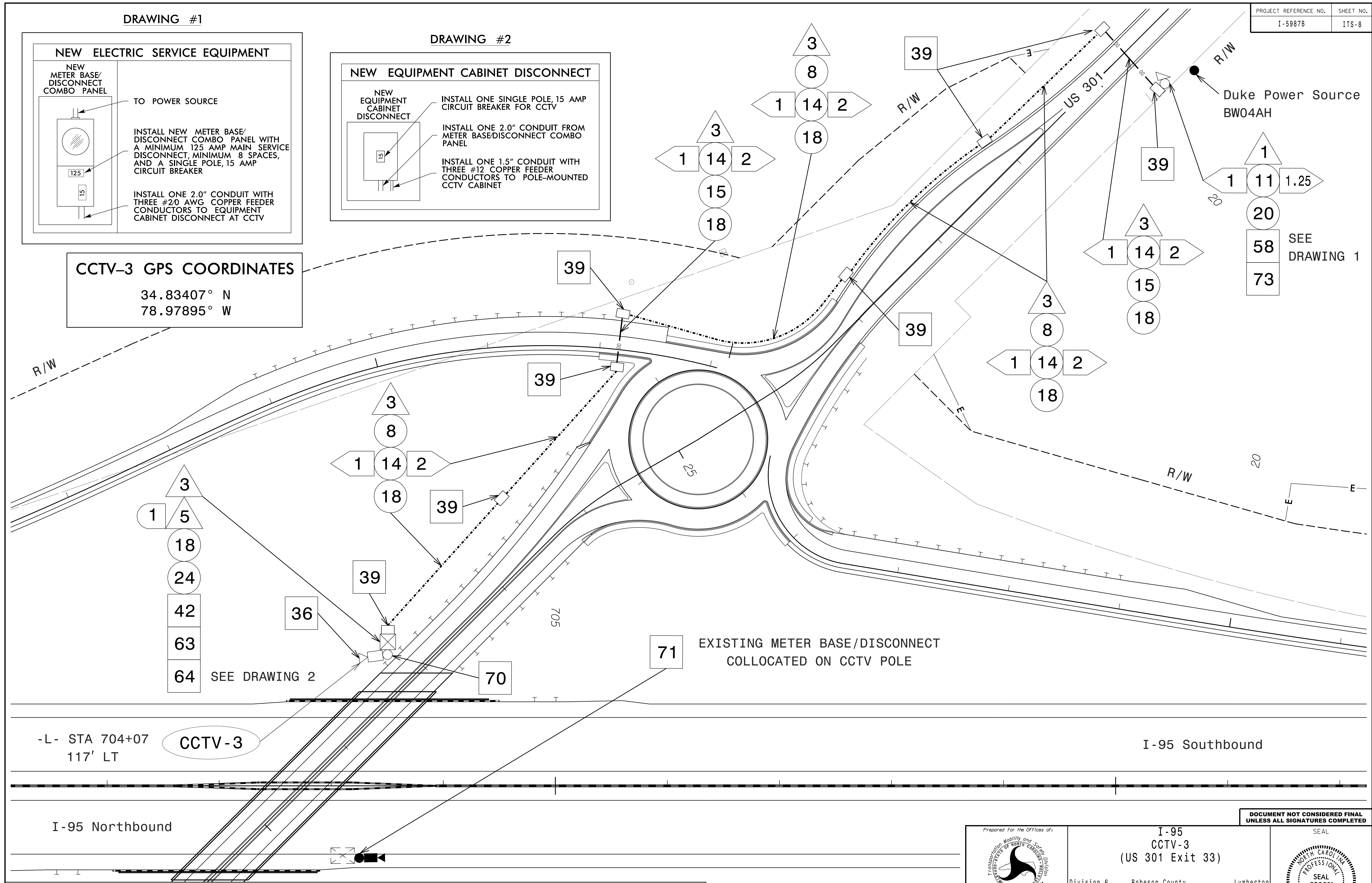


DRAWING #2



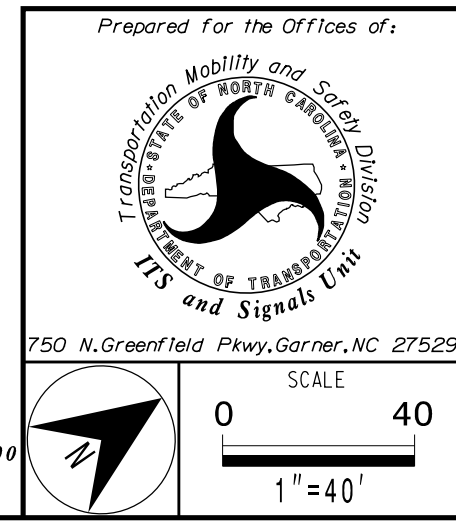
CCTV-3 GPS COORDINATES

34.83407° N
78.97895° W



3/11/2022
 R:\ITS\Files\gmp\plan_sheets\I-5987B\ITS_psh_08_E.rvt(133.dgn)
 10:03:11 AM

- NOTES:**
1. POWER COMPANY CONTACT - DUKE ENERGY - ERIC CHAVIS (910) 506-6531.
 2. REFER TO SHEET 3B-4 FOR GUARDRAIL INFORMATION.
 3. MAINTAIN A MINIMUM OF 6 FEET FROM THE EDGE OF PAVEMENT WHEN TRENCHING PARALLEL TO THE ROADWAY.
 4. CONTACT DIVISION 6 TRAFFIC ENGINEER FRANK D. WEST, JR. AT (910) 364-0606 TO CONFIRM THE LOCATION OF THE CCTV/DMS.
 5. DO NOT INSTALL CONDUIT OR JUNCTION BOXES UNTIL THE PROPOSED LOCATION OF THE CCTV CAMERA OR DMS HAVE BEEN CONFIRMED BY THE DIVISION TRAFFIC ENGINEER.
 6. MOUNT THE CCTV CAMERA 45 FEET ABOVE GRADE.
 7. MOUNT THE CCTV CAMERA 5 FEET BELOW THE TOP OF THE POLE.
 8. INSTALL CCTV POLE A MINIMUM OF 8 FEET BEHIND GUARDRAIL.



I-95 CCTV-3 (US 301 Exit 33)	
Division 6	Robeson County
Lumberton	
PLAN DATE: March 2022	REVIEWED BY: S.G. Haynie
PREPARED BY: O. Drobny	REVIEWED BY: J. S. Cole
REVISIONS	INIT. DATE

DOCUMENT NOT CONSIDERED FINAL
UNLESS ALL SIGNATURES COMPLETED

SEAL

Steven G. Haynie
3/18/2022

CADD Filename: _____

