

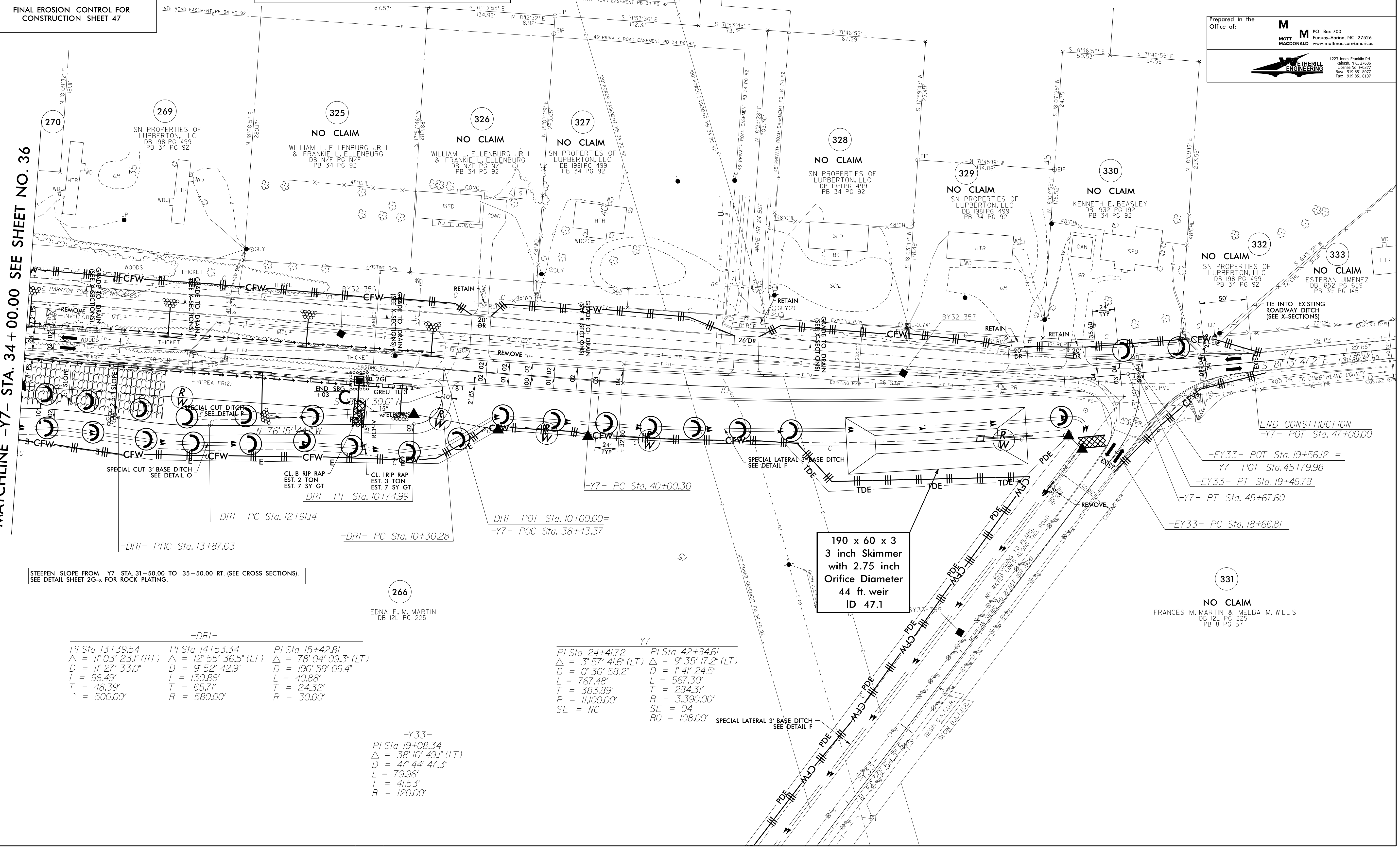
LEVEL III CERTIFIED BY: MATTHEW HARVEY, PE CERTIFICATION NUMBER: 3487 ISSUED: MARCH 15, 2022

Prepared in the Office of: MOTT MACDONALD MOTT MACDONALD ENGINEERING

- NOTE: ALL EROSION CONTROL DEVICES SHOWN ARE LOCATED WITHIN EXISTING RW OR EASEMENT.
NOTE: CONTRACTOR SHALL MAINTAIN ALL DEVICES AS PROJECT IS BROUGHT UP TO GRADE.
NOTE: CONTRACTOR SHALL PROVIDE INLET PROTECTION FOR PARTIALLY INSTALLED STORM DRAINS. THIS MEASURE SHOULD BE INSTALLED AT THE END OF EACH WORKING DAY.
NOTE: INSTALL MATTING FOR EROSION CONTROL IN ALL PROPOSED DITCH LINES EXCEPT WHERE PERMANENT LINERS ARE SPECIFIED ON THE PLANS OR DIRECTED OTHERWISE BY THE ENGINEER.
NOTE: CONTRACTOR SHALL PROVIDE GROUND COVER ON EXPOSED SLOPES IN ACCORDANCE WITH THE "SOIL STABILIZATION TIMEFRAMES", SEE EC-3.
NOTE: UTILIZE FABRIC INSERT INLET PROTECTION DEVICES IN LIEU OF ROCK INLET SEDIMENT TRAPS TYPE-C, AS DIRECTED, TO AVOID IMPOUNDMENT OF RUNOFF IN ROADWAY OPEN TO TRAFFIC.

FINAL EROSION CONTROL FOR CONSTRUCTION SHEET 47

MATCHLINE -Y7- STA. 34 + 00.00 SEE SHEET NO. 36



STEEPEN SLOPE FROM -Y7- STA. 31+50.00 TO 35+50.00 RT. (SEE CROSS SECTIONS). SEE DETAIL SHEET 2C-X FOR ROCK PLATING.

Table with 3 columns of data for -DRI- stations: PI Sta 13+39.54, PI Sta 14+53.34, PI Sta 15+42.81. Includes values for Delta, D, L, T, R.

Table with 2 columns of data for -Y7- stations: PI Sta 24+41.72, PI Sta 42+84.61. Includes values for Delta, D, L, T, R, SE, RO.

Table with 1 column of data for -Y33- stations: PI Sta 19+08.34. Includes values for Delta, D, L, T, R.

190 x 60 x 3 3 inch Skimmer with 2.75 inch Orifice Diameter 44 ft. weir ID 47.1