

5/14/2022

3/14/2022
E:\Erosion_Control\15987b_EC_PSH_46_f.mxd
Mott MacDonald

PROJECT REFERENCE NO. <i>1-5897B</i>	SHEET NO. EC-92/CONST.46
RW SHEET NO.	
ROADSIDE ENVIRONMENTAL PROJECT ENGINEER	
LEVEL III CERTIFIED BY: MATTHEW HARVEY, PE CERTIFICATION NUMBER: 3487 ISSUED: MARCH 15, 2022	

Prepared in the Office of:

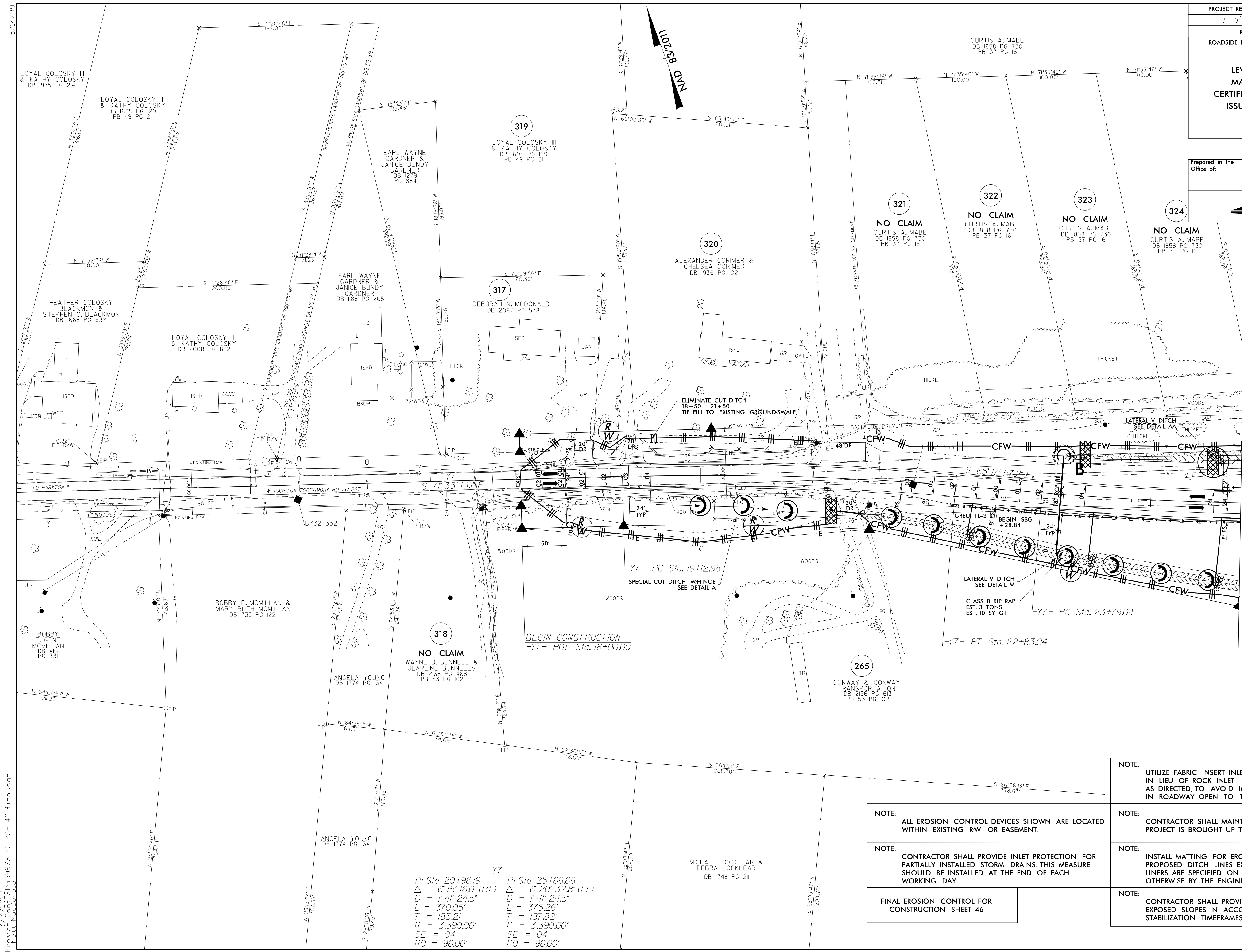
M M
MOTT MACDONALD

PO Box 700
Fuquay-Varina, NC 27526
www.motmac.com/americas

ETHERILL ENGINEERING

1223 Jones Franklin Rd.
Raleigh, N.C. 27606
License No. 14377
Bus: 919.851.8077
Fax: 919.851.9107

MATCHLINE -Y7- STA. 26 + 00.00 SEE SHEET NO. 36



-Y7-

PI Sta 20+98.19	PI Sta 25+66.86
Δ = 6' 15" 16.0" (RT)	Δ = 6' 20" 32.8" (LT)
D = 1' 4" 24.5"	D = 1' 4" 24.5"
L = 370.05'	L = 375.26'
T = 185.21'	T = 187.82'
R = 3,390.00'	R = 3,390.00'
SE = 04	SE = 04
RO = 96.00'	RO = 96.00'

NOTE: ALL EROSION CONTROL DEVICES SHOWN ARE LOCATED WITHIN EXISTING RW OR EASEMENT.

NOTE: CONTRACTOR SHALL PROVIDE INLET PROTECTION FOR PARTIALLY INSTALLED STORM DRAINS. THIS MEASURE SHOULD BE INSTALLED AT THE END OF EACH WORKING DAY.

FINAL EROSION CONTROL FOR CONSTRUCTION SHEET 46

NOTE: UTILIZE FABRIC INSERT INLET PROTECTION DEVICES IN LIEU OF ROCK INLET SEDIMENT TRAPS-C, AS DIRECTED, TO AVOID IMPOUNDMENT OF RUNOFF IN ROADWAY OPEN TO TRAFFIC.

NOTE: CONTRACTOR SHALL MAINTAIN ALL DEVICES AS PROJECT IS BROUGHT UP TO GRADE.

NOTE: INSTALL MATTING FOR EROSION CONTROL IN ALL PROPOSED DITCH LINES EXCEPT WHERE PERMANENT LINERS ARE SPECIFIED ON THE PLANS OR DIRECTED OTHERWISE BY THE ENGINEER.

NOTE: CONTRACTOR SHALL PROVIDE GROUND COVER ON EXPOSED SLOPES IN ACCORDANCE WITH THE "SOIL STABILIZATION TIMEFRAMES", SEE EC-3.