

5/14/99

NOTE: ALL EROSION CONTROL DEVICES SHOWN ARE LOCATED WITHIN EXISTING RW OR EASEMENT.

NOTE: CONTRACTOR SHALL MAINTAIN ALL DEVICES AS PROJECT IS BROUGHT UP TO GRADE.

NOTE: CONTRACTOR SHALL PROVIDE INLET PROTECTION FOR PARTIALLY INSTALLED STORM DRAINS. THIS MEASURE SHOULD BE INSTALLED AT THE END OF EACH WORKING DAY.

NOTE: INSTALL MATTING FOR EROSION CONTROL IN ALL PROPOSED DITCH LINES EXCEPT WHERE PERMANENT LINERS ARE SPECIFIED ON THE PLANS OR DIRECTED OTHERWISE BY THE ENGINEER.

FINAL EROSION CONTROL FOR CONSTRUCTION SHEET 45

NOTE: CONTRACTOR SHALL PROVIDE GROUND COVER ON EXPOSED SLOPES IN ACCORDANCE WITH THE "SOIL STABILIZATION TIMEFRAMES", SEE EC-3.

NOTE: UTILIZE FABRIC INSERT INLET PROTECTION DEVICES IN LIEU OF ROCK INLET SEDIMENT TRAPS TYPE-C, AS DIRECTED, TO AVOID IMPOUNDMENT OF RUNOFF IN ROADWAY OPEN TO TRAFFIC.

PROJECT REFERENCE NO. 1-5987B SHEET NO. EC-91/CONST.45

RW SHEET NO.

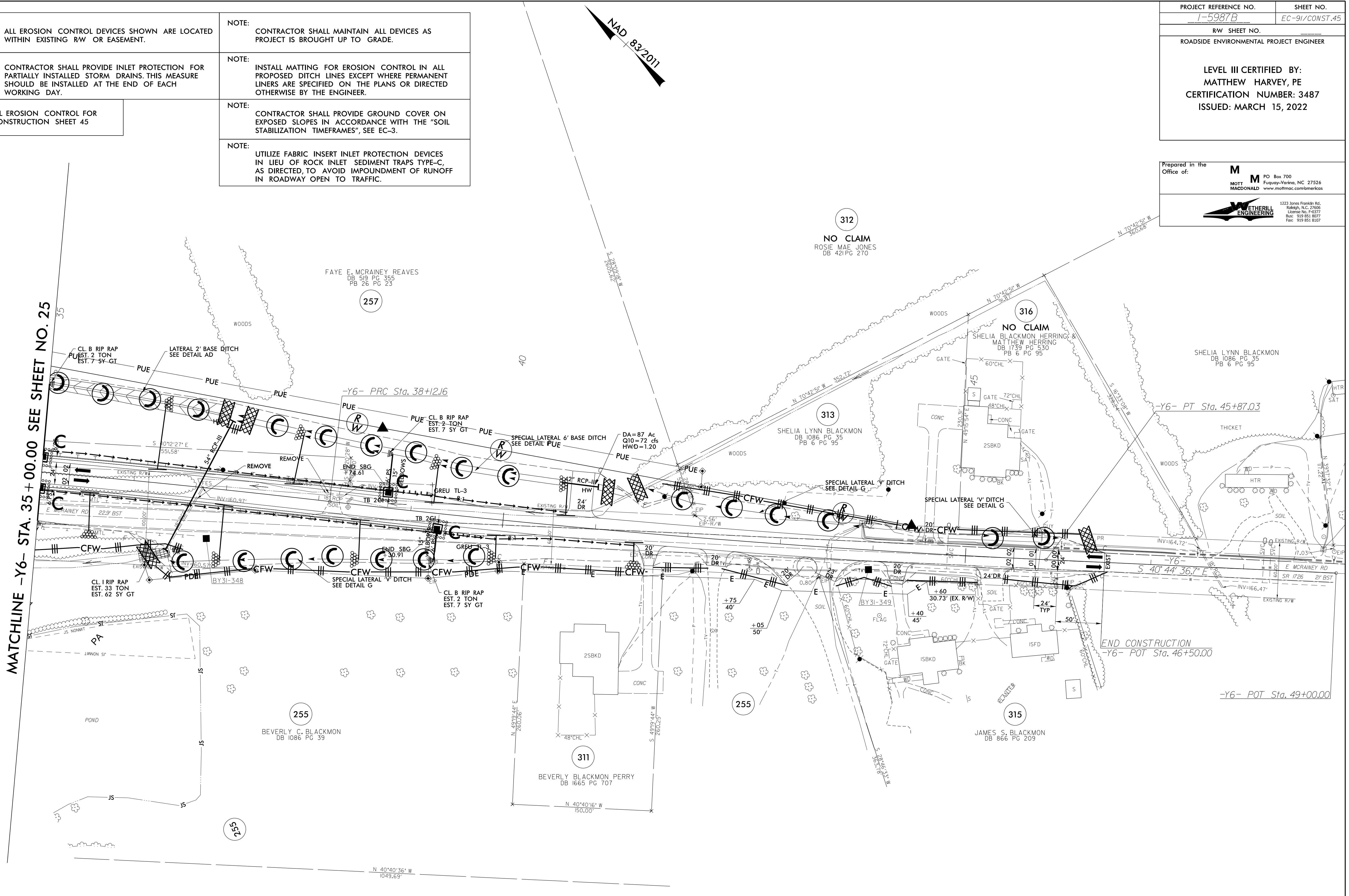
ROADSIDE ENVIRONMENTAL PROJECT ENGINEER

LEVEL III CERTIFIED BY:
MATTHEW HARVEY, PE
CERTIFICATION NUMBER: 3487
ISSUED: MARCH 15, 2022

Prepared in the Office of:

M M MOTT MACDONALD
PO Box 700
Fuquay-Varina, NC 27526
www.mottmac.com/americas

ETHERILL ENGINEERING
1223 Jones Franklin Rd.
Raleigh, N.C. 27606
License No. 14377
Bus: 919.851.8077
Fax: 919.851.9107



MATCHLINE -Y6- STA. 35+00.00 SEE SHEET NO. 25

312
NO CLAIM
ROSIE MAE JONES
DB 421 PG 270

316
NO CLAIM
SHELIA BLACKMON HERRING &
MATTHEW HERRING
DB 1739 PG 530
PB 6 PG 95

313
SHELIA LYNN BLACKMON
DB 1086 PG 35
PB 6 PG 95

SHELIA LYNN BLACKMON
DB 1086 PG 35
PB 6 PG 95

257
FAYE E. MCRAINEY REAVES
DB 519 PG 355
PB 26 PG 23

255
BEVERLY C. BLACKMON
DB 1086 PG 39

311
BEVERLY BLACKMON PERRY
DB 1665 PG 707

315
JAMES S. BLACKMON
DB 866 PG 209

-Y6-

PI Sta 34+95.22	PI Sta 41+99.75
$\Delta = 3' 16' 22.2''$ (RT)	$\Delta = 3' 59' 59.0''$ (LT)
$D = 0' 30' 58.2''$	$D = 0' 30' 58.2''$
$L = 634.05'$	$L = 774.87'$
$T = 317.11'$	$T = 387.59'$
$R = 11,100.00'$	$R = 11,100.00'$
$SE = NC$	$SE = NC$

3/14/2022
Erosion_Control_15987b_EC_PSH_45_f.mxd
Mott MacDonald