

5/14/2022

R:\Erosion\3/14/2022\15987b-EC.psh85_final.dgn
Mott MacDonald

NOTE: ALL EROSION CONTROL DEVICES SHOWN ARE LOCATED WITHIN EXISTING RW OR EASEMENT.

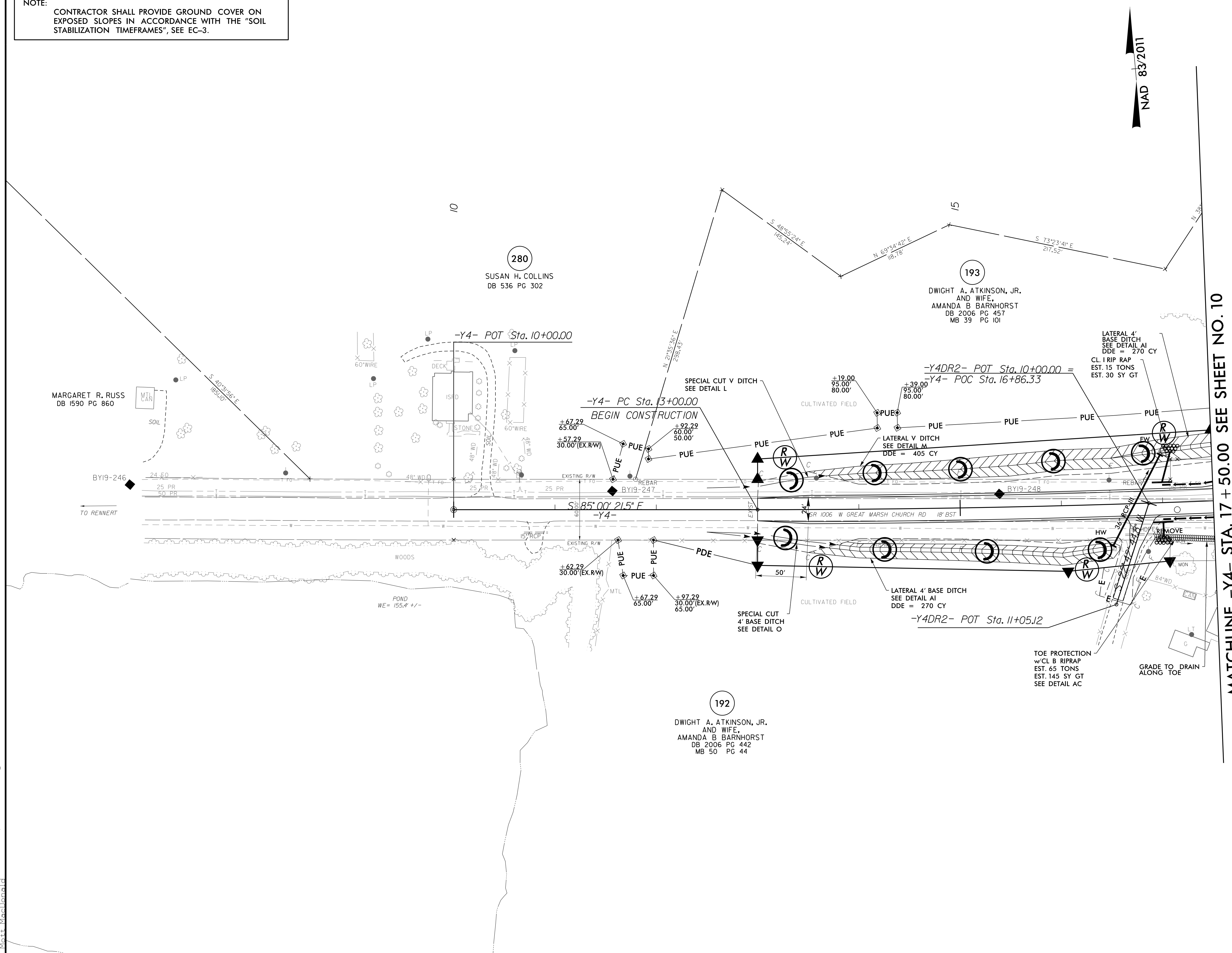
NOTE: CONTRACTOR SHALL PROVIDE INLET PROTECTION FOR PARTIALLY INSTALLED STORM DRAINS. THIS MEASURE SHOULD BE INSTALLED AT THE END OF EACH WORKING DAY.

NOTE: CONTRACTOR SHALL PROVIDE GROUND COVER ON EXPOSED SLOPES IN ACCORDANCE WITH THE "SOIL STABILIZATION TIMEFRAMES", SEE EC-3.

NOTE: CONTRACTOR SHALL MAINTAIN ALL DEVICES AS PROJECT IS BROUGHT UP TO GRADE.

NOTE: INSTALL MATTING FOR EROSION CONTROL IN ALL PROPOSED DITCH LINES EXCEPT WHERE PERMANENT LINERS ARE SPECIFIED ON THE PLANS OR DIRECTED OTHERWISE BY THE ENGINEER.

PROJECT REFERENCE NO.	SHEET NO.
1-5987B	EC-85/CONST.39
RW SHEET NO.	
ROADSIDE ENVIRONMENTAL PROJECT ENGINEER	
<p>LEVEL III CERTIFIED BY: ELENI M. RIGGS, PE CERTIFICATION NUMBER: 3056 ISSUED: MARCH 15, 2022</p>	
Prepared in the Office of:	<p>M MOTT MACDONALD 7621 Purfoy Rd, Suite 115 Fuquay-Varina, NC 27526 www.mottmac.com/americas</p>
<p>FINAL EROSION CONTROL FOR CONSTRUCTION SHEET 39</p>	



MATCHLINE -Y4- STA. 17 + 50.00 SEE SHEET NO. 10