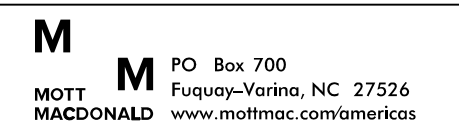



5/14/2022
 Erosion_Control_01_15987B_EC_PSH_38_f.mxd
 Mott MacDonald

NAD 83/2011

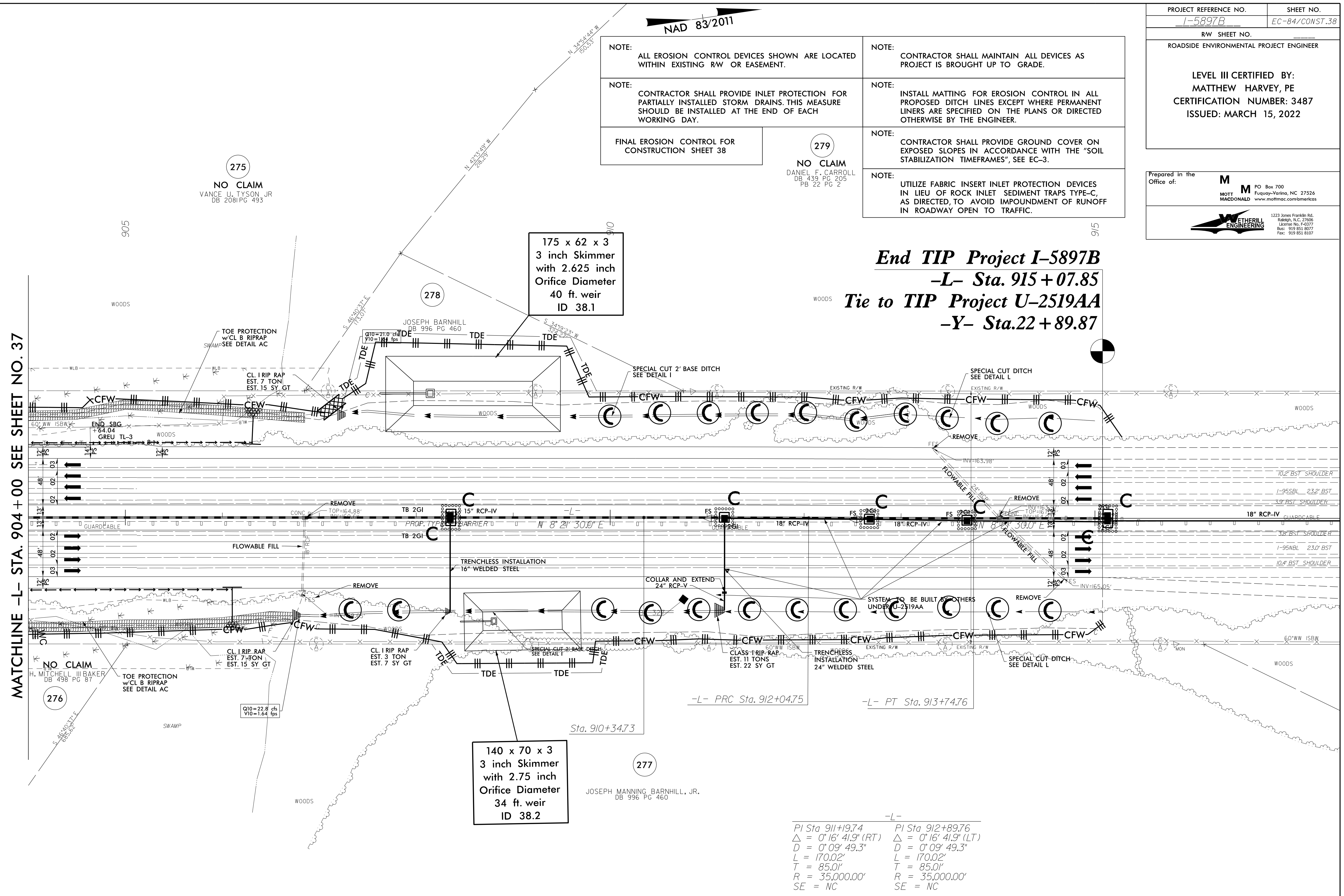
PROJECT REFERENCE NO.	SHEET NO.
I-5897B	EC-84/CONST.38
RW SHEET NO.	
ROADSIDE ENVIRONMENTAL PROJECT ENGINEER	
LEVEL III CERTIFIED BY: MATTHEW HARVEY, PE CERTIFICATION NUMBER: 3487 ISSUED: MARCH 15, 2022	
Prepared in the Office of:	 MOTT MACDONALD PO Box 700 Fuquay-Varina, NC 27526 www.mottmac.com/amerikas
 1223 Jones Franklin Rd. Raleigh, N.C. 27606 License No. 44377 Bus: 919 851 8877 Fax: 919 851 8107	

- NOTE: ALL EROSION CONTROL DEVICES SHOWN ARE LOCATED WITHIN EXISTING RW OR EASEMENT.
- NOTE: CONTRACTOR SHALL MAINTAIN ALL DEVICES AS PROJECT IS BROUGHT UP TO GRADE.
- NOTE: CONTRACTOR SHALL PROVIDE INLET PROTECTION FOR PARTIALLY INSTALLED STORM DRAINS. THIS MEASURE SHOULD BE INSTALLED AT THE END OF EACH WORKING DAY.
- NOTE: INSTALL MATTING FOR EROSION CONTROL IN ALL PROPOSED DITCH LINES EXCEPT WHERE PERMANENT LINERS ARE SPECIFIED ON THE PLANS OR DIRECTED OTHERWISE BY THE ENGINEER.
- NOTE: CONTRACTOR SHALL PROVIDE GROUND COVER ON EXPOSED SLOPES IN ACCORDANCE WITH THE "SOIL STABILIZATION TIMEFRAMES", SEE EC-3.
- NOTE: UTILIZE FABRIC INSERT INLET PROTECTION DEVICES IN LIEU OF ROCK INLET SEDIMENT TRAPS TYPE-C, AS DIRECTED, TO AVOID IMPOUNDMENT OF RUNOFF IN ROADWAY OPEN TO TRAFFIC.

279
 NO CLAIM
 DANIEL F. CARROLL
 DB 439 PG 205
 PB 22 PG 2

MATCHLINE -L- STA. 904 + 00 SEE SHEET NO. 37

End TIP Project I-5897B
-L- Sta. 915 + 07.85
Tie to TIP Project U-2519AA
-Y- Sta. 22 + 89.87



140 x 70 x 3
 3 inch Skimmer
 with 2.75 inch
 Orifice Diameter
 34 ft. weir
 ID 38.2

175 x 62 x 3
 3 inch Skimmer
 with 2.625 inch
 Orifice Diameter
 40 ft. weir
 ID 38.1

-L-

PI Sta 911+19.74	PI Sta 912+89.76
Δ = 0' 16' 41.9" (RT)	Δ = 0' 16' 41.9" (LT)
D = 0' 09' 49.3"	D = 0' 09' 49.3"
L = 170.02'	L = 170.02'
T = 85.01'	T = 85.01'
R = 35,000.00'	R = 35,000.00'
SE = NC	SE = NC