

NOTE: UTILIZE FABRIC INSERT INLET PROTECTION DEVICES IN LIEU OF ROCK INLET SEDIMENT TRAPS TYPE-C, AS DIRECTED, TO AVOID IMPOUNDMENT OF RUNOFF IN ROADWAY OPEN TO TRAFFIC.

NOTE: ALL EROSION CONTROL DEVICES SHOWN ARE LOCATED WITHIN EXISTING RW OR EASEMENT.

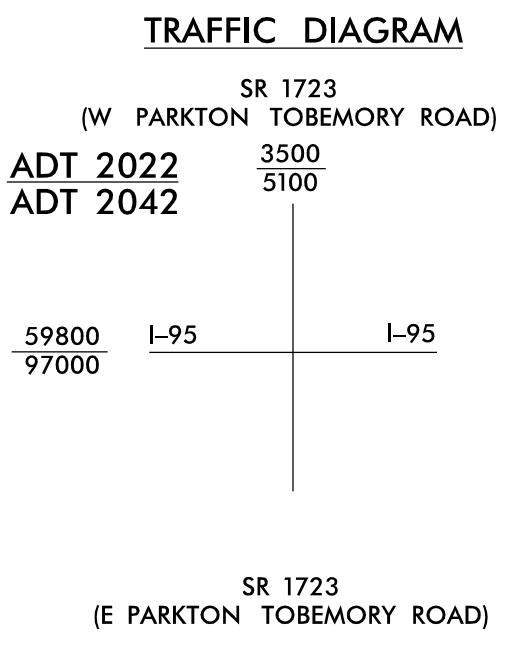
NOTE: CONTRACTOR SHALL PROVIDE INLET PROTECTION FOR PARTIALLY INSTALLED STORM DRAINS. THIS MEASURE SHOULD BE INSTALLED AT THE END OF EACH WORKING DAY.

FINAL EROSION CONTROL FOR CONSTRUCTION SHEET 36

NOTE: CONTRACTOR SHALL MAINTAIN ALL DEVICES AS PROJECT IS BROUGHT UP TO GRADE.

NOTE: INSTALL MATTING FOR EROSION CONTROL IN ALL PROPOSED DITCH LINES EXCEPT WHERE PERMANENT LINERS ARE SPECIFIED ON THE PLANS OR DIRECTED OTHERWISE BY THE ENGINEER.

NOTE: CONTRACTOR SHALL PROVIDE GROUND COVER ON EXPOSED SLOPES IN ACCORDANCE WITH THE "SOIL STABILIZATION TIMEFRAMES", SEE EC-3.



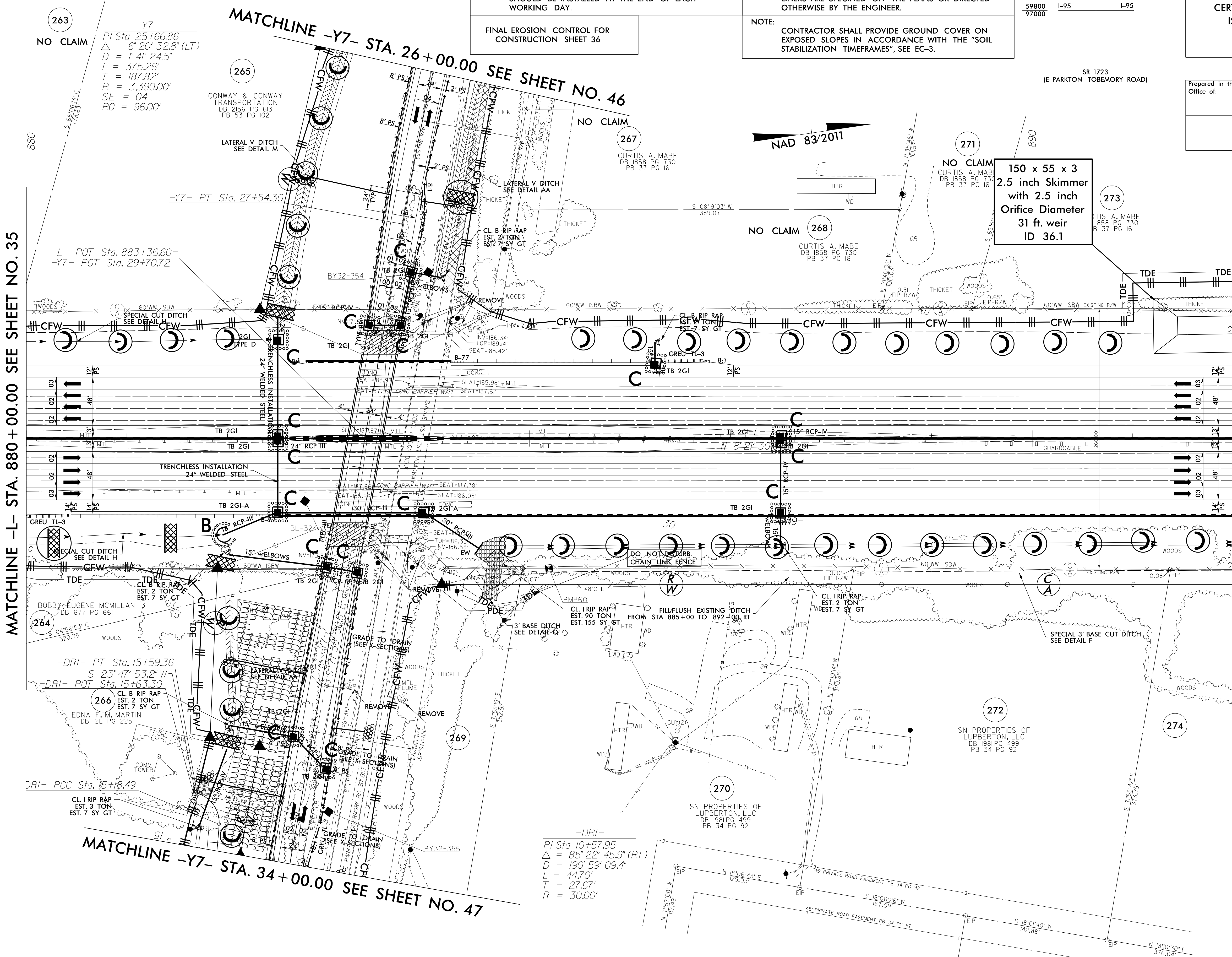
PROJECT REFERENCE NO.	SHEET NO.
1-5897B	EC-82/CONST.36
RW SHEET NO.	
ROADSIDE ENVIRONMENTAL PROJECT ENGINEER	
LEVEL III CERTIFIED BY: MATTHEW HARVEY, PE CERTIFICATION NUMBER: 3487 ISSUED: MARCH 15, 2022	

Prepared in the Office of:

M M
MOTT MACDONALD

PO Box 700
Fuquay-Varina, NC 27526
www.motmac.com/americas

1223 Jones Franklin Rd.
Raleigh, N.C. 27606
License No. 643177
Bus: 919 851 8977
Fax: 919 851 8107



MATCHLINE -L- STA. 880 + 00.00 SEE SHEET NO. 35

MATCHLINE -L- STA. 892 + 00.00 SEE SHEET NO. 37

MATCHLINE -Y7- STA. 34 + 00.00 SEE SHEET NO. 47

MATCHLINE -Y7- STA. 26 + 00.00 SEE SHEET NO. 46

263
NO CLAIM
-Y7-
PI Sta 25+66.86
Δ = 6° 20' 32.8" (LT)
D = 1° 41' 24.5"
L = 375.26'
T = 187.82'
R = 3,390.00'
SE = 04
RO = 96.00'

265
CONWAY & CONWAY
TRANSPORTATION
DB 2156 PG 613
PB 53 PG 102

267
NO CLAIM
CURTIS A. MABE
DB 1858 PG 730
PB 37 PG 16

268
NO CLAIM
CURTIS A. MABE
DB 1858 PG 730
PB 37 PG 16

150 x 55 x 3
2.5 inch Skimmer
with 2.5 inch
Orifice Diameter
31 ft. weir
ID 36.1

273
NO CLAIM
CURTIS A. MABE
DB 1858 PG 730
PB 37 PG 16

264
BOBBY-EUGENE MCMILLAN
DB 677 PG 661

266
EDNA F. M. MARTIN
DB 121 PG 225

270
SN PROPERTIES OF
LUPBERTON, LLC
DB 1981 PG 499
PB 34 PG 92

272
SN PROPERTIES OF
LUPBERTON, LLC
DB 1981 PG 499
PB 34 PG 92

274

-DRI-
PI Sta 10+57.95
Δ = 85° 22' 45.9" (RT)
D = 190° 59' 09.4"
L = 44.70'
T = 27.67'
R = 30.00'

