

5/14/2022

3/14/2022  
Erosion\_Control\_15987B\_EC\_PSH\_35\_f.mcd  
Mott MacDonald

NAD 83/2011

PROJECT REFERENCE NO. 1-5897B SHEET NO. EC-81/CONST.35

RW SHEET NO. ROADSIDE ENVIRONMENTAL PROJECT ENGINEER

LEVEL III CERTIFIED BY:  
MATTHEW HARVEY, PE  
CERTIFICATION NUMBER: 3487  
ISSUED: MARCH 15, 2022

Prepared in the Office of:  
**M M** MOTT MACDONALD  
PO Box 700  
Fuquay-Varina, NC 27526  
www.mottmac.com/america  
1223 Jones Franklin Rd.  
Raleigh, N.C. 27606  
License No. 64377  
Bus: 919 851 8977  
Fax: 919 851 8107

NOTE: ALL EROSION CONTROL DEVICES SHOWN ARE LOCATED WITHIN EXISTING RW OR EASEMENT.

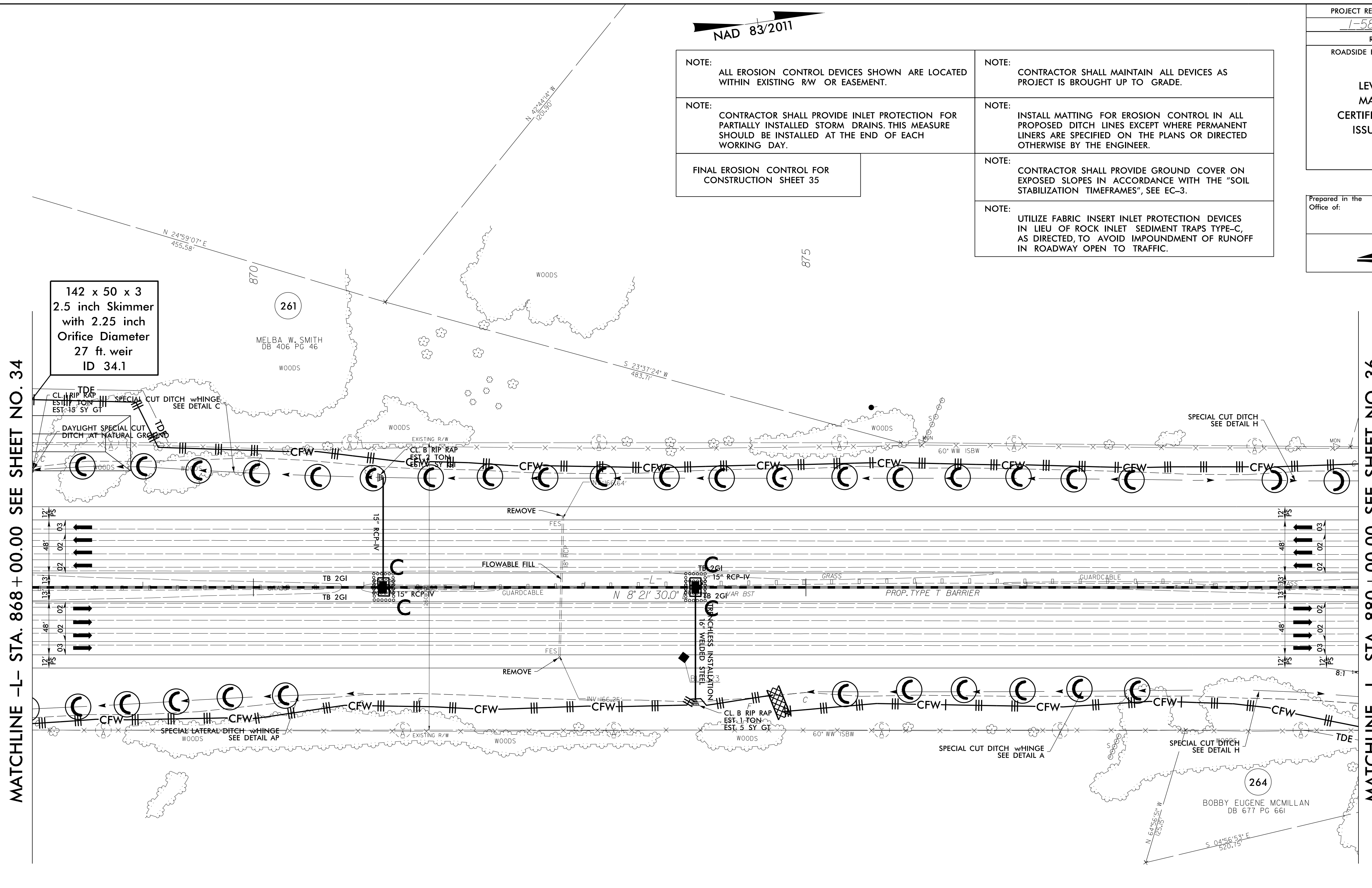
NOTE: CONTRACTOR SHALL MAINTAIN ALL DEVICES AS PROJECT IS BROUGHT UP TO GRADE.

NOTE: CONTRACTOR SHALL PROVIDE INLET PROTECTION FOR PARTIALLY INSTALLED STORM DRAINS. THIS MEASURE SHOULD BE INSTALLED AT THE END OF EACH WORKING DAY.

NOTE: CONTRACTOR SHALL PROVIDE GROUND COVER ON EXPOSED SLOPES IN ACCORDANCE WITH THE "SOIL STABILIZATION TIMEFRAMES", SEE EC-3.

NOTE: UTILIZE FABRIC INSERT INLET PROTECTION DEVICES IN LIEU OF ROCK INLET SEDIMENT TRAPS TYPE-C, AS DIRECTED, TO AVOID IMPOUNDMENT OF RUNOFF IN ROADWAY OPEN TO TRAFFIC.

FINAL EROSION CONTROL FOR CONSTRUCTION SHEET 35



MATCHLINE -L- STA. 868 + 00.00 SEE SHEET NO. 34

MATCHLINE -L- STA. 880 + 00.00 SEE SHEET NO. 36

142 x 50 x 3  
2.5 inch Skimmer  
with 2.25 inch  
Orifice Diameter  
27 ft. weir  
ID 34.1

266  
EDNA F. M. MARTIN  
DB 12L PG 225