



5/14/2022

Erosion_Control_15987B_EC_PSH_34_1.mxd

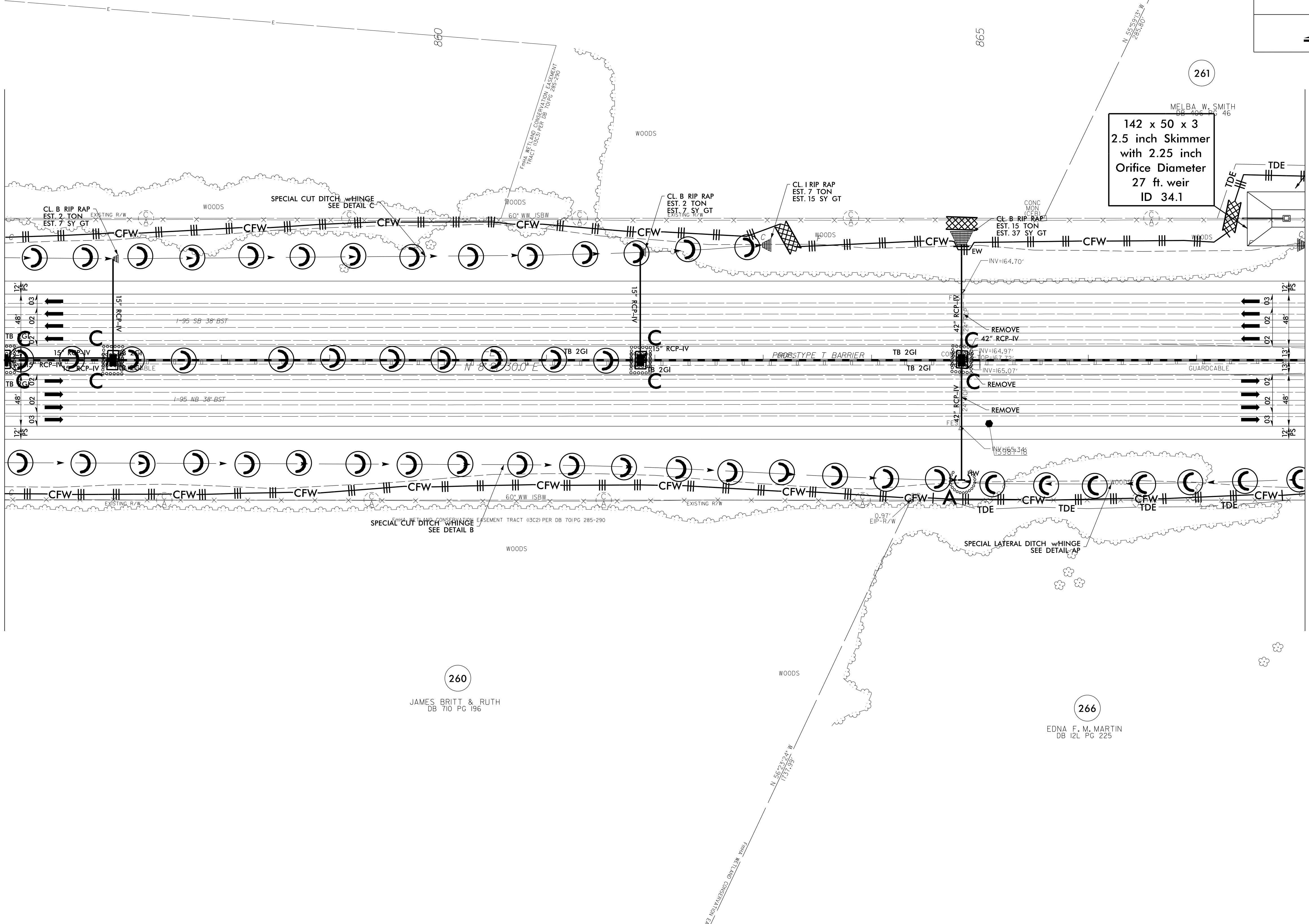
NAD 83/2011

PROJECT REFERENCE NO.	SHEET NO.
1-5897B	EC-80/CONST.34
RW SHEET NO.	
ROADSIDE ENVIRONMENTAL PROJECT ENGINEER	
LEVEL III CERTIFIED BY: MATTHEW HARVEY, PE CERTIFICATION NUMBER: 3487 ISSUED: MARCH 15, 2022	
Prepared in the Office of:	 MOTT MACDONALD PO Box 700 Fuquay-Varina, NC 27526 www.mottmac.com/america
	 1223 Jones Franklin Rd. Raleigh, N.C. 27606 License No. 64337 Bus: 919 851 8877 Fax: 919 851 8107

NOTE: ALL EROSION CONTROL DEVICES SHOWN ARE LOCATED WITHIN EXISTING RW OR EASEMENT.	NOTE: CONTRACTOR SHALL MAINTAIN ALL DEVICES AS PROJECT IS BROUGHT UP TO GRADE.	FINAL EROSION CONTROL FOR CONSTRUCTION SHEET 34
NOTE: CONTRACTOR SHALL PROVIDE INLET PROTECTION FOR PARTIALLY INSTALLED STORM DRAINS. THIS MEASURE SHOULD BE INSTALLED AT THE END OF EACH WORKING DAY.	NOTE: INSTALL MATTING FOR EROSION CONTROL IN ALL PROPOSED DITCH LINES EXCEPT WHERE PERMANENT LINERS ARE SPECIFIED ON THE PLANS OR DIRECTED OTHERWISE BY THE ENGINEER.	
NOTE: UTILIZE FABRIC INSERT INLET PROTECTION DEVICES IN LIEU OF ROCK INLET SEDIMENT TRAPS TYPE-C, AS DIRECTED, TO AVOID IMPOUNDMENT OF RUNOFF IN ROADWAY OPEN TO TRAFFIC.	NOTE: CONTRACTOR SHALL PROVIDE GROUND COVER ON EXPOSED SLOPES IN ACCORDANCE WITH THE "SOIL STABILIZATION TIMEFRAMES", SEE EC-3.	

MATCHLINE -L- STA. 856 + 00.00 SEE SHEET NO. 33

MATCHLINE -L- STA. 868 + 00.00 SEE SHEET NO. 35



142 x 50 x 3
2.5 inch Skimmer
with 2.25 inch
Orifice Diameter
27 ft. weir
ID 34.1