

PROJECT REFERENCE NO.	SHEET NO.
1-5897B	EC-76/CONST.30
RW SHEET NO.	
ROADSIDE ENVIRONMENTAL PROJECT ENGINEER	
LEVEL III CERTIFIED BY: MATTHEW HARVEY, PE CERTIFICATION NUMBER: 3487 ISSUED: MARCH 15, 2022	

Prepared in the Office of:

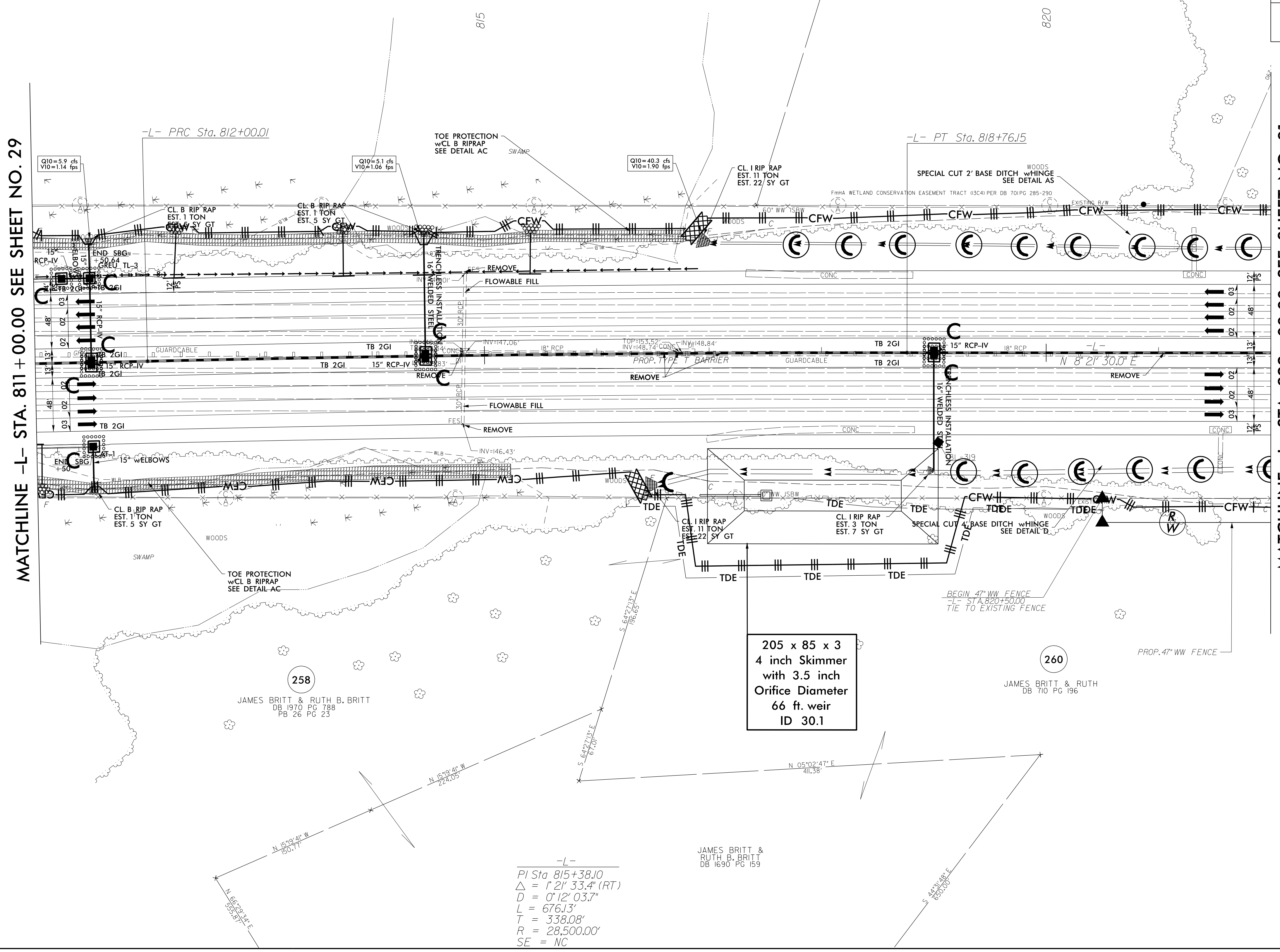
M M
MOTT
MACDONALD

PO Box 700
Fuquay-Varina, NC 27526
www.mottmac.com/americas

ETHERILL
ENGINEERING

1223 Jones Franklin Rd.
Raleigh, N.C. 27606
License No. 1-4377
Bus: 919.851.8077
Fax: 919.851.9107

FINAL EROSION CONTROL FOR CONSTRUCTION SHEET 30	NOTE: ALL EROSION CONTROL DEVICES SHOWN ARE LOCATED WITHIN EXISTING RW OR EASEMENT.	NOTE: CONTRACTOR SHALL MAINTAIN ALL DEVICES AS PROJECT IS BROUGHT UP TO GRADE.
	NOTE: CONTRACTOR SHALL PROVIDE INLET PROTECTION FOR PARTIALLY INSTALLED STORM DRAINS. THIS MEASURE SHOULD BE INSTALLED AT THE END OF EACH WORKING DAY.	NOTE: INSTALL MATTING FOR EROSION CONTROL IN ALL PROPOSED DITCH LINES EXCEPT WHERE PERMANENT LINERS ARE SPECIFIED ON THE PLANS OR DIRECTED OTHERWISE BY THE ENGINEER.
	NOTE: UTILIZE FABRIC INSERT INLET PROTECTION DEVICES IN LIEU OF ROCK INLET SEDIMENT TRAPS TYPE-C, AS DIRECTED, TO AVOID IMPOUNDMENT OF RUNOFF IN ROADWAY OPEN TO TRAFFIC.	NOTE: CONTRACTOR SHALL PROVIDE GROUND COVER ON EXPOSED SLOPES IN ACCORDANCE WITH THE "SOIL STABILIZATION TIMEFRAMES", SEE EC-3.



256

FAYE E. MCRAINEY REAVES
DB 519 PG 355
PB 26 PG 23

815

820

MATCHLINE -L- STA. 811 + 00.00 SEE SHEET NO. 29

MATCHLINE -L- STA. 822 + 00.00 SEE SHEET NO. 31

205 x 85 x 3
4 inch Skimmer
with 3.5 inch
Orifice Diameter
66 ft. weir
ID 30.1

258

JAMES BRITT & RUTH B. BRITT
DB 1970 PG 788
PB 26 PG 23

260

JAMES BRITT & RUTH B. BRITT
DB 710 PG 196

-L-
PI Sta 815+38.10
Δ = 1' 21" 33.4" (RT)
D = 0' 12" 03.7"
L = 676.13'
T = 338.08'
R = 28,500.00'
SE = NC

JAMES BRITT & RUTH B. BRITT
DB 1690 PG 159