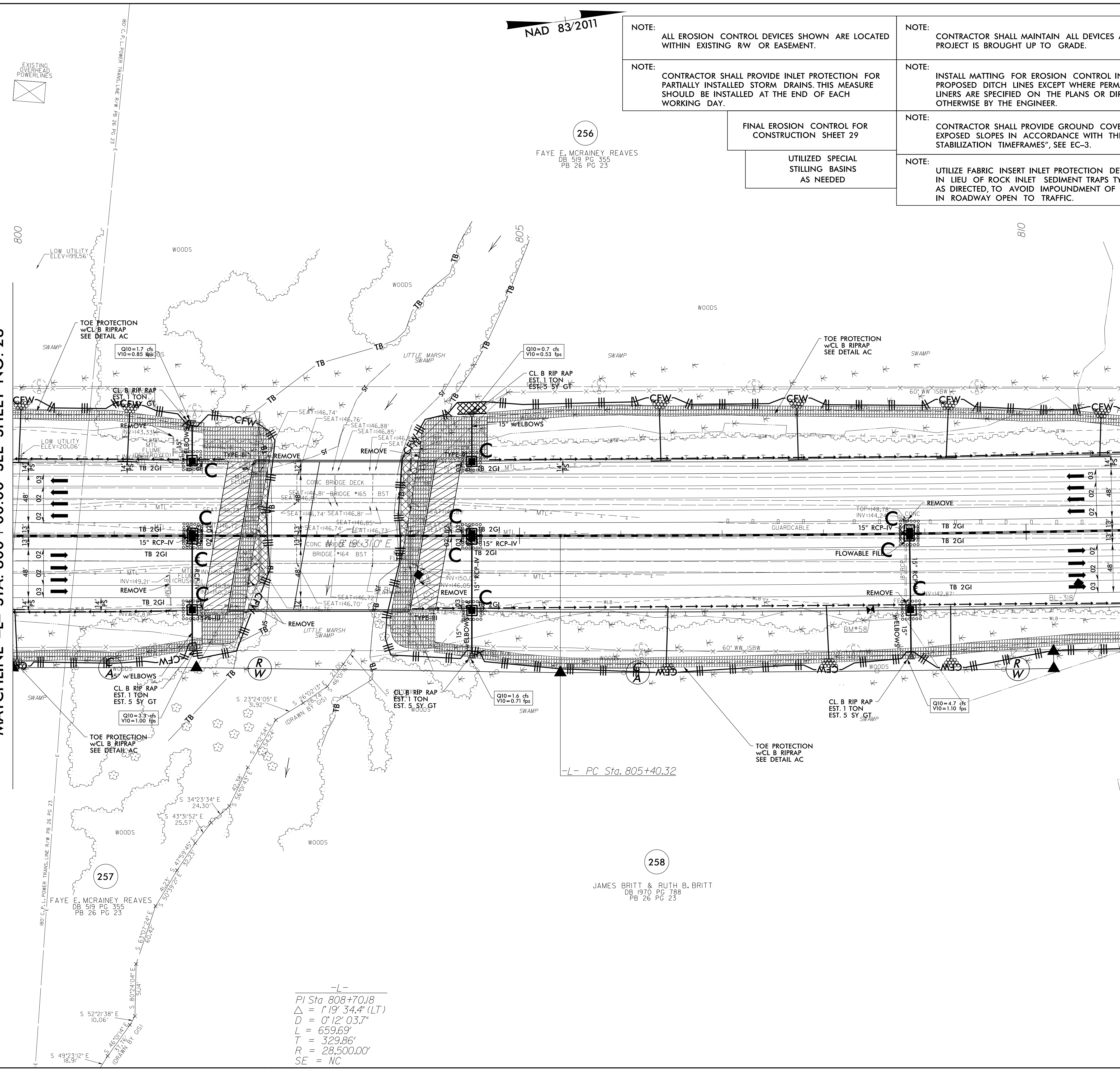


5/14/99

3/14/2022
E:\Erosion_Control\15987B_EC_PSH_29_f.mxd
Mott MacDonald

MATCHLINE -L- STA. 800 + 00.00 SEE SHEET NO. 28

MATCHLINE -L- STA. 811 + 00.00 SEE SHEET NO. 30



NAD 83/2011

256

FAYE E. MCRAINEY REAVES
DB 519 PG 355
PB 26 PG 23

NOTE:
ALL EROSION CONTROL DEVICES SHOWN ARE LOCATED WITHIN EXISTING RW OR EASEMENT.

NOTE:
CONTRACTOR SHALL PROVIDE INLET PROTECTION FOR PARTIALLY INSTALLED STORM DRAINS. THIS MEASURE SHOULD BE INSTALLED AT THE END OF EACH WORKING DAY.

FINAL EROSION CONTROL FOR CONSTRUCTION SHEET 29

UTILIZED SPECIAL STILLING BASINS AS NEEDED

NOTE:
CONTRACTOR SHALL MAINTAIN ALL DEVICES AS PROJECT IS BROUGHT UP TO GRADE.

NOTE:
INSTALL MATTING FOR EROSION CONTROL IN ALL PROPOSED DITCH LINES EXCEPT WHERE PERMANENT LINERS ARE SPECIFIED ON THE PLANS OR DIRECTED OTHERWISE BY THE ENGINEER.

NOTE:
CONTRACTOR SHALL PROVIDE GROUND COVER ON EXPOSED SLOPES IN ACCORDANCE WITH THE "SOIL STABILIZATION TIMEFRAMES", SEE EC-3.

NOTE:
UTILIZE FABRIC INSERT INLET PROTECTION DEVICES IN LIEU OF ROCK INLET SEDIMENT TRAPS TYPE-C, AS DIRECTED, TO AVOID IMPOUNDMENT OF RUNOFF IN ROADWAY OPEN TO TRAFFIC.

PROJECT REFERENCE NO. 1-5897B SHEET NO. EC-75/CONST.29

RW SHEET NO. ROADSIDE ENVIRONMENTAL PROJECT ENGINEER

LEVEL III CERTIFIED BY:
MATTHEW HARVEY, PE
CERTIFICATION NUMBER: 3487
ISSUED: MARCH 15, 2022

Prepared in the Office of:
MOTT MACDONALD
PO Box 700
Fuquay-Varina, NC 27526
www.mottmac.com/americas

ETHERILL ENGINEERING
1223 Jones Franklin Rd.
Raleigh, N.C. 27606
License No. 1-4377
Bus: 919.851.8077
Fax: 919.851.9107

-L- PC Sta. 805+40.32

258

JAMES BRITT & RUTH B. BRITT
DB 1970 PG 788
PB 26 PG 23

-L-
PI Sta 808+70.18
Δ = 1' 19" 34.4" (LT)
D = 0' 12" 03.7"
L = 659.69'
T = 329.86'
R = 28,500.00'
SE = NC