

5/14/2022

Erosion\_Control\_15987B\_EC\_PSH\_28\_f.mxd

Mott MacDonald

NAD 83/2011

PROJECT REFERENCE NO. 1-5897B SHEET NO. EC-74/CONST.28

RW SHEET NO. ROADSIDE ENVIRONMENTAL PROJECT ENGINEER

LEVEL III CERTIFIED BY: MATTHEW HARVEY, PE CERTIFICATION NUMBER: 3487 ISSUED: MARCH 15, 2022

Prepared in the Office of: MOTT MACDONALD 1223 Jones Franklin Rd. Raleigh, N.C. 27606 License No. 143777 Bui: 919 851 8077 Fax: 919 851 9107

NOTE: ALL EROSION CONTROL DEVICES SHOWN ARE LOCATED WITHIN EXISTING R/W OR EASEMENT.

NOTE: CONTRACTOR SHALL MAINTAIN ALL DEVICES AS PROJECT IS BROUGHT UP TO GRADE.

NOTE: CONTRACTOR SHALL PROVIDE INLET PROTECTION FOR PARTIALLY INSTALLED STORM DRAINS THIS MEASURE SHOULD BE INSTALLED AT THE END OF EACH WORKING DAY.

NOTE: INSTALL MATTING FOR EROSION CONTROL IN ALL PROPOSED DITCH LINES EXCEPT WHERE PERMANENT LINERS ARE SPECIFIED ON THE PLANS OR DIRECTED OTHERWISE BY THE ENGINEER.

NOTE: UTILIZE FABRIC INSERT INLET PROTECTION DEVICES IN LIEU OF ROCK INLET SEDIMENT TRAPS TYPE-C, AS DIRECTED, TO AVOID IMPONDMENT OF RUNOFF IN ROADWAY OPEN TO TRAFFIC.

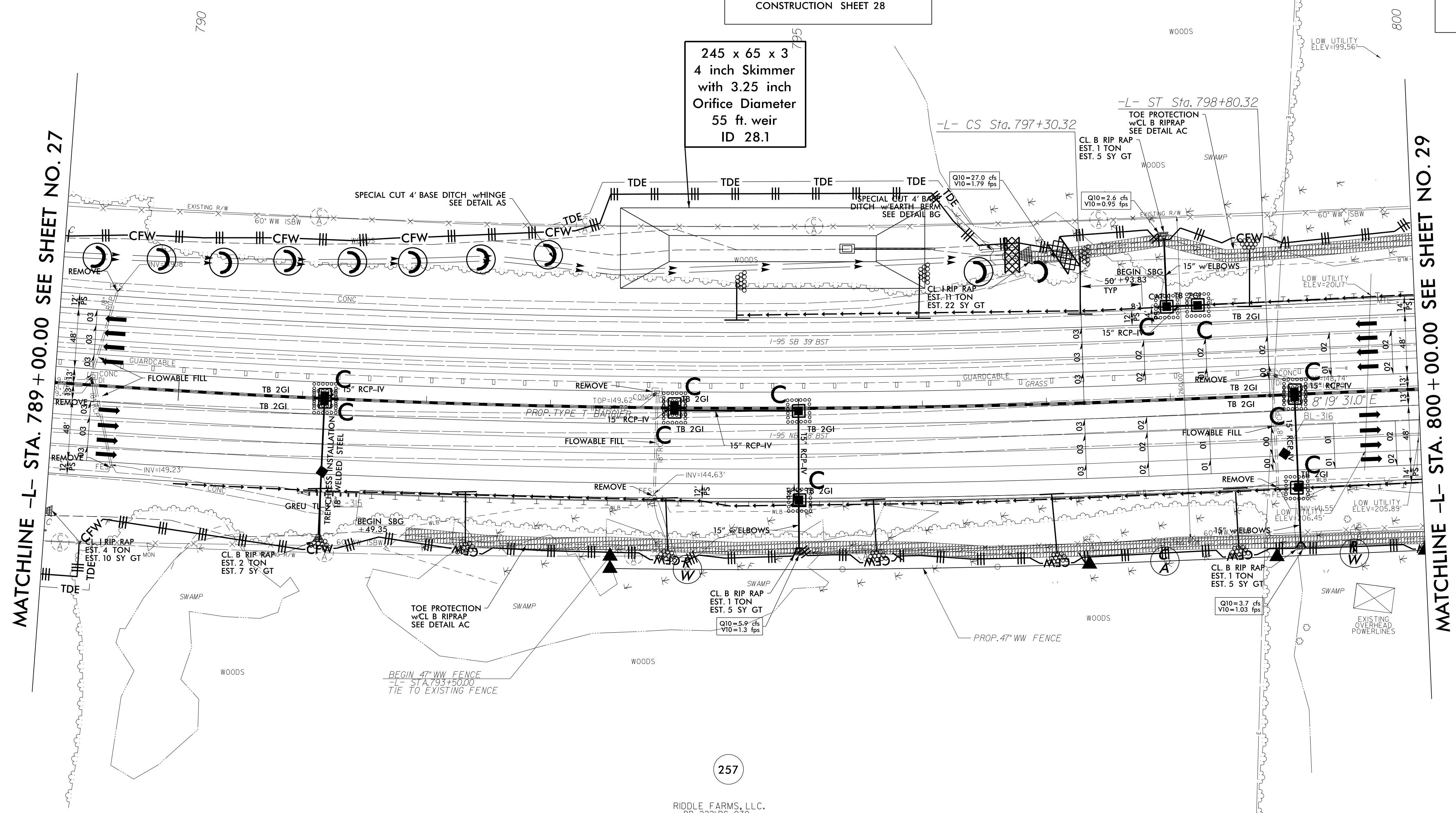
NOTE: CONTRACTOR SHALL PROVIDE GROUND COVER ON EXPOSED SLOPES IN ACCORDANCE WITH THE "SOIL STABILIZATION TIMEFRAMES", SEE EC-3.

FINAL EROSION CONTROL FOR CONSTRUCTION SHEET 28

256 FAYE E. MCRAINEY DB 519 PG 3/3 PB 26 PG 2

245 x 65 x 3 4 inch Skimmer with 3.25 inch Orifice Diameter 55 ft. weir ID 28.1

257 RIDDLE FARMS, LLC. DB 222 PG 07/07 PB 55 PG 07



MATCHLINE -L- STA. 789 + 00.00 SEE SHEET NO. 27

MATCHLINE -L- STA. 800 + 00.00 SEE SHEET NO. 29

-L- PI Sta 788+81.45 PIs Sta 797+80.32 Δ = 12' 33" 12.3" (LT) θs = 0' 33" 08.4" D = 0' 44" 11.2" Ls = 150.00' L = 1,704.58' LT = 100.00' T = 855.72' ST = 50.00' R = 7,780.00' SE = 03 RO = 150.00'