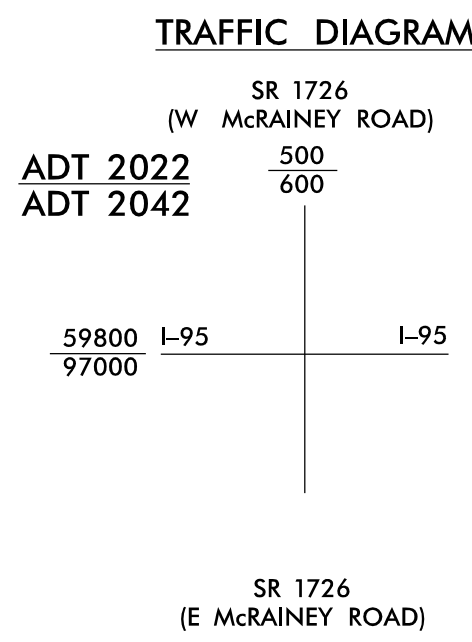


5/14/2022

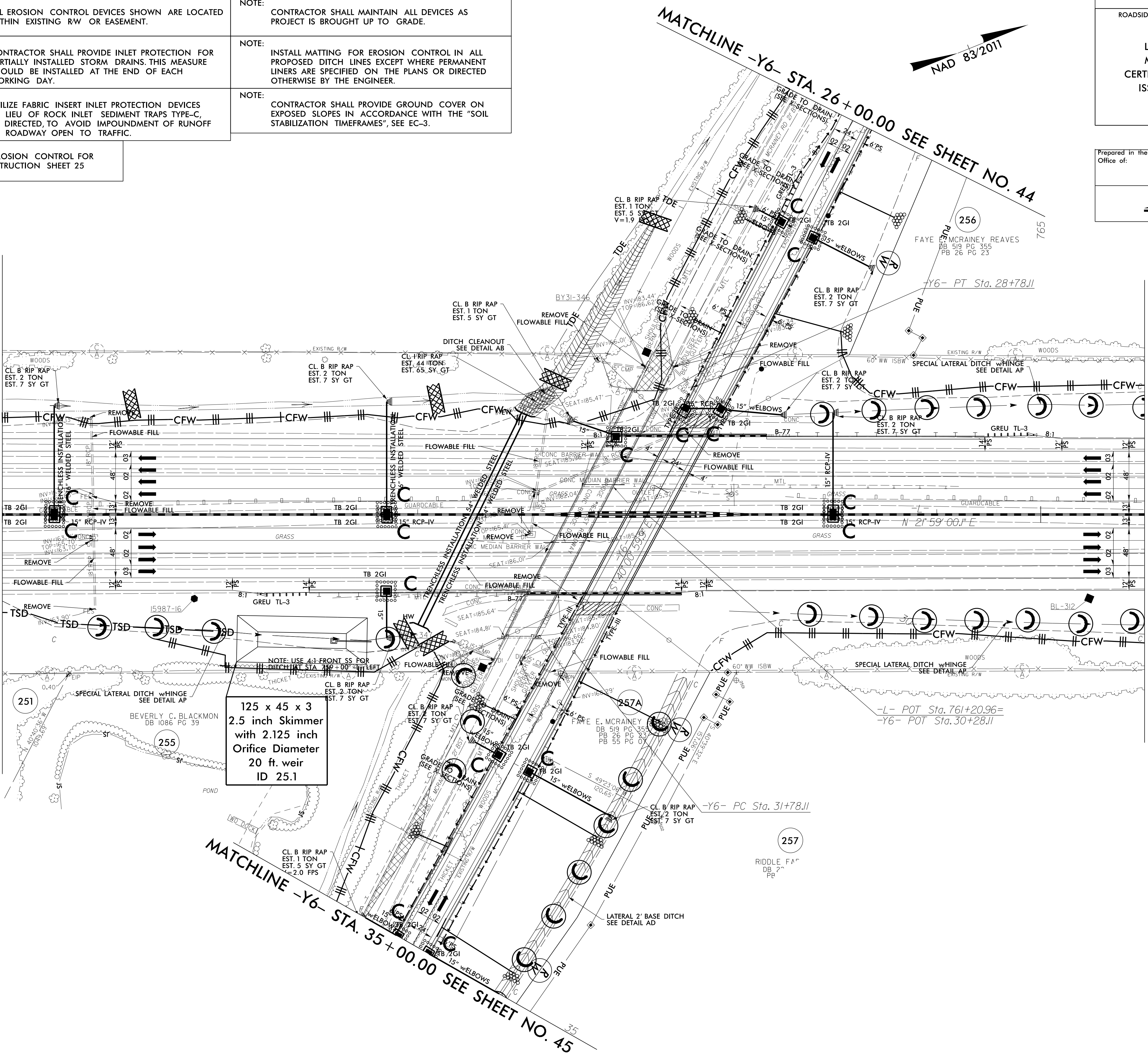


NOTE: ALL EROSION CONTROL DEVICES SHOWN ARE LOCATED WITHIN EXISTING RW OR EASEMENT.	NOTE: CONTRACTOR SHALL MAINTAIN ALL DEVICES AS PROJECT IS BROUGHT UP TO GRADE.
NOTE: CONTRACTOR SHALL PROVIDE INLET PROTECTION FOR PARTIALLY INSTALLED STORM DRAINS. THIS MEASURE SHOULD BE INSTALLED AT THE END OF EACH WORKING DAY.	NOTE: INSTALL MATTING FOR EROSION CONTROL IN ALL PROPOSED DITCH LINES EXCEPT WHERE PERMANENT LINERS ARE SPECIFIED ON THE PLANS OR DIRECTED OTHERWISE BY THE ENGINEER.
NOTE: UTILIZE FABRIC INSERT INLET PROTECTION DEVICES IN LIEU OF ROCK INLET SEDIMENT TRAPS TYPE-C, AS DIRECTED, TO AVOID IMPOUNDMENT OF RUNOFF IN ROADWAY OPEN TO TRAFFIC.	NOTE: CONTRACTOR SHALL PROVIDE GROUND COVER ON EXPOSED SLOPES IN ACCORDANCE WITH THE 'SOIL STABILIZATION TIMEFRAMES', SEE EC-3.
FINAL EROSION CONTROL FOR CONSTRUCTION SHEET 25	

PROJECT REFERENCE NO. <i>1-5897B</i>	SHEET NO. <i>EC-71/CONST.25</i>
RW SHEET NO.	
ROADSIDE ENVIRONMENTAL PROJECT ENGINEER	
LEVEL III CERTIFIED BY: MATTHEW HARVEY, PE CERTIFICATION NUMBER: 3487 ISSUED: MARCH 15, 2022	
Prepared in the Office of:	

MATCHLINE -L- STA. 755 + 00.00 SEE SHEET NO. 24

MATCHLINE -L- STA. 766 + 00.00 SEE SHEET NO. 26



NOTE: USE 4:1 FRONT SS FOR DITCH AT STA. 102+00 TO LEFT

125 x 45 x 3  
2.5 inch Skimmer  
with 2.125 inch  
Orifice Diameter  
20 ft. weir  
ID 25.1

3/14/2022  
Ergoston\_Contr-01\_15987B\_EC\_PSH\_25\_f.mxd.dgn  
Matt MacDonald