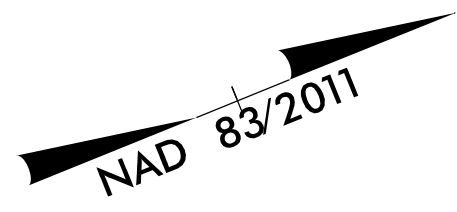


5/14/99

FAYE E. MCRAINEY REAVES
DB 519 PG 355
PB 26 PG 23

252



PROJECT REFERENCE NO. SHEET NO.
1-5987B EC-70/CONST.24

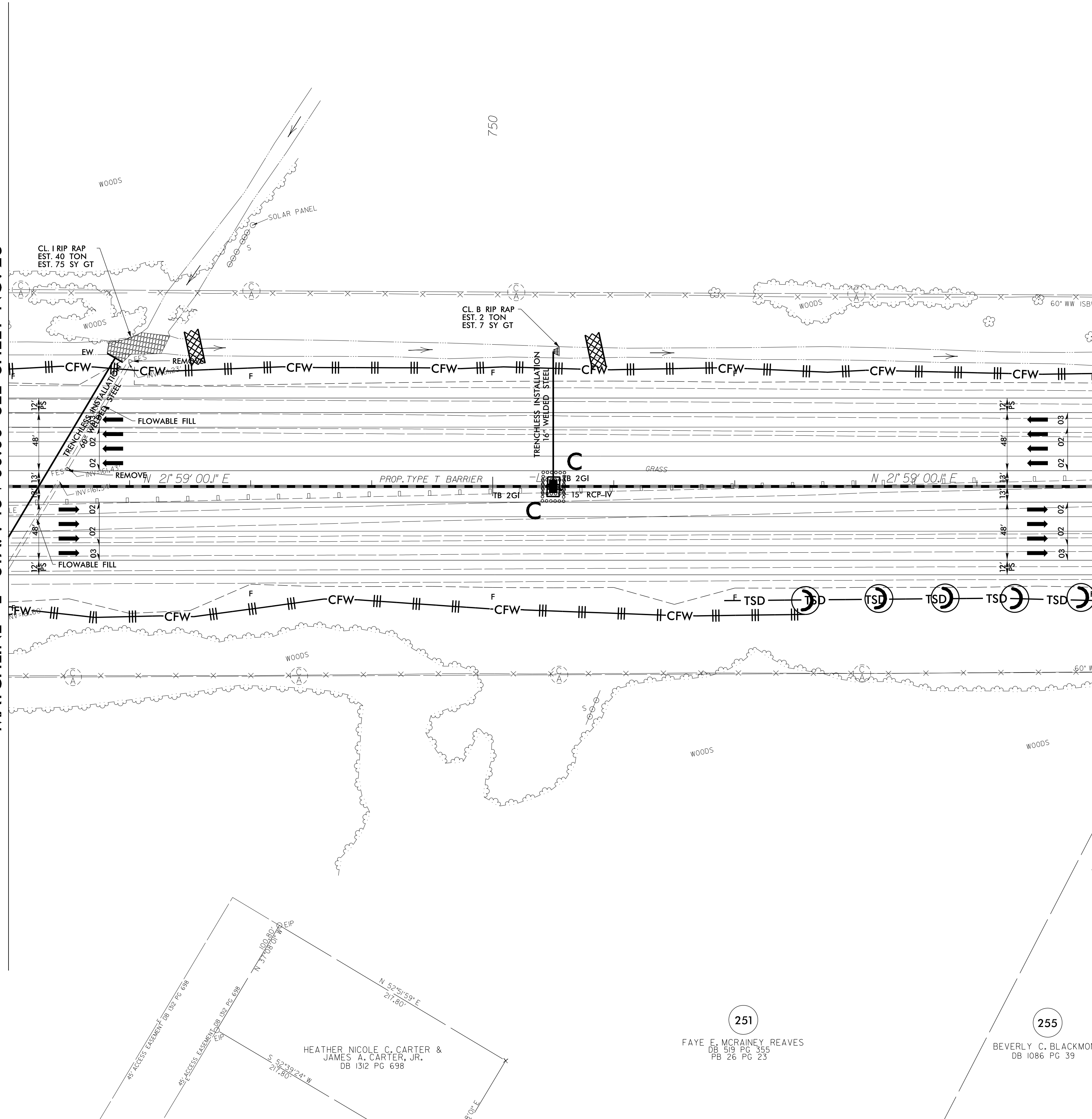
RW SHEET NO.
ROADSIDE ENVIRONMENTAL PROJECT ENGINEER

LEVEL III CERTIFIED BY:
MATTHEW HARVEY, PE
CERTIFICATION NUMBER: 3487
ISSUED: MARCH 15, 2022



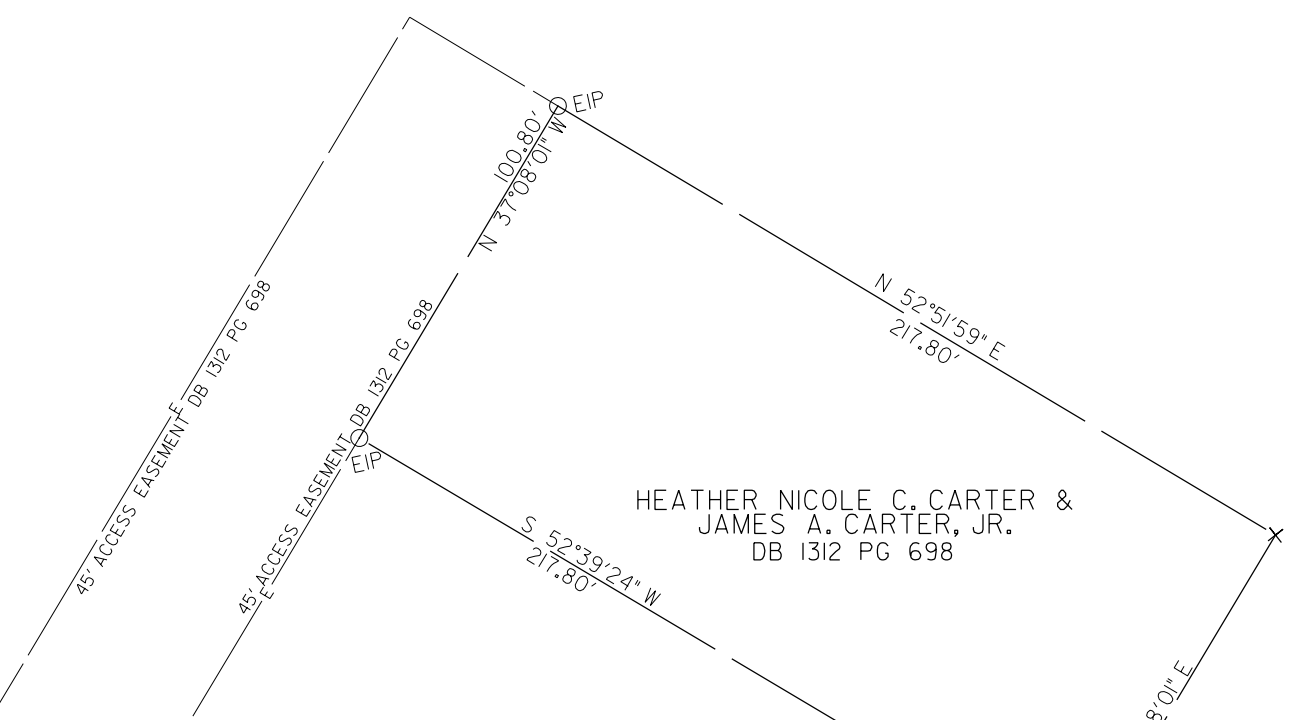
MATCHLINE -L- STA. 746 + 00.00 SEE SHEET NO. 23

MATCHLINE -L- STA. 755 + 00.00 SEE SHEET NO. 25



- NOTE: CONTRACTOR SHALL MAINTAIN ALL DEVICES AS PROJECT IS BROUGHT UP TO GRADE.
 - NOTE: INSTALL MATTING FOR EROSION CONTROL IN ALL PROPOSED DITCH LINES EXCEPT WHERE PERMANENT LINERS ARE SPECIFIED ON THE PLANS OR DIRECTED OTHERWISE BY THE ENGINEER.
 - NOTE: CONTRACTOR SHALL PROVIDE GROUND COVER ON EXPOSED SLOPES IN ACCORDANCE WITH THE "SOIL STABILIZATION TIMEFRAMES", SEE EC-3.
 - NOTE: ALL EROSION CONTROL DEVICES SHOWN ARE LOCATED WITHIN EXISTING RW OR EASEMENT.
 - NOTE: CONTRACTOR SHALL PROVIDE INLET PROTECTION FOR PARTIALLY INSTALLED STORM DRAINS. THIS MEASURE SHOULD BE INSTALLED AT THE END OF EACH WORKING DAY.
 - NOTE: UTILIZE FABRIC INSERT INLET PROTECTION DEVICES IN LIEU OF ROCK INLET SEDIMENT TRAPS TYPE-C, AS DIRECTED, TO AVOID IMPOUNDMENT OF RUNOFF IN ROADWAY OPEN TO TRAFFIC.
- FINAL EROSION CONTROL FOR CONSTRUCTION SHEET 24

3/14/2022
E:\egston_control\15987B_EC_PSH_24_f.mxd.dgn
Matt MacDonald



251
FAYE E. MCRAINEY REAVES
DB 519 PG 355
PB 26 PG 23

255
BEVERLY C. BLACKMON
DB 1086 PG 39