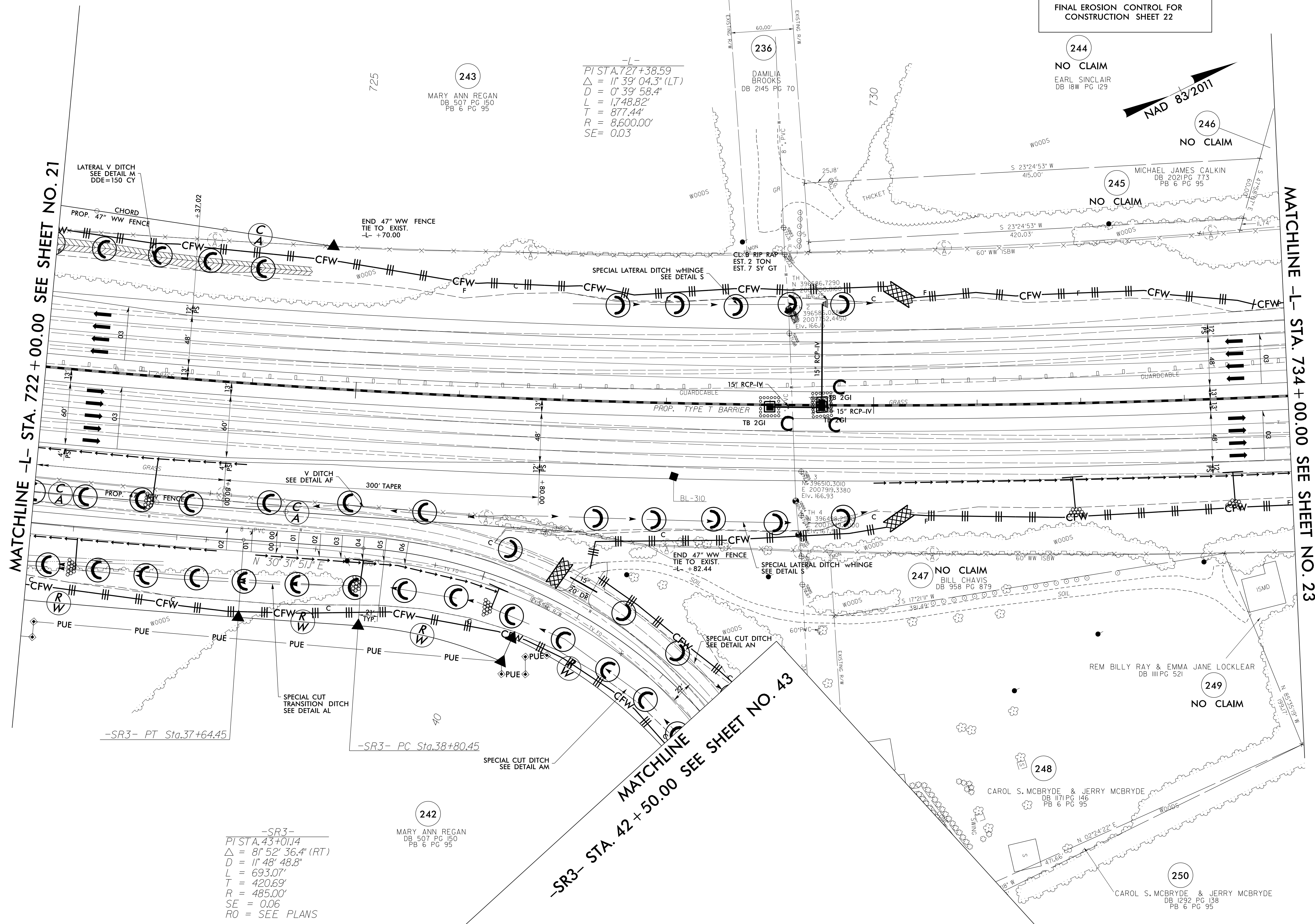


5/14/99

REVISIONS

3/14/2022
Ergoston_Contr-01_15987B_EC_PSH_22_1.mxd
Matt MacDonald



NOTE: ALL EROSION CONTROL DEVICES SHOWN ARE LOCATED WITHIN EXISTING RW OR EASEMENT.

NOTE: CONTRACTOR SHALL PROVIDE INLET PROTECTION FOR PARTIALLY INSTALLED STORM DRAINS. THIS MEASURE SHOULD BE INSTALLED AT THE END OF EACH WORKING DAY.

NOTE: UTILIZE FABRIC INSERT INLET PROTECTION DEVICES IN LIEU OF ROCK INLET SEDIMENT TRAPS TYPE-C, AS DIRECTED, TO AVOID IMPOUNDMENT OF RUNOFF IN ROADWAY OPEN TO TRAFFIC.

NOTE: CONTRACTOR SHALL MAINTAIN ALL DEVICES AS PROJECT IS BROUGHT UP TO GRADE.

NOTE: INSTALL MATTING FOR EROSION CONTROL IN ALL PROPOSED DITCH LINES EXCEPT WHERE PERMANENT LINERS ARE SPECIFIED ON THE PLANS OR DIRECTED OTHERWISE BY THE ENGINEER.

NOTE: CONTRACTOR SHALL PROVIDE GROUND COVER ON EXPOSED SLOPES IN ACCORDANCE WITH THE "SOIL STABILIZATION TIMEFRAMES", SEE EC-3.

FINAL EROSION CONTROL FOR CONSTRUCTION SHEET 22

PROJECT REFERENCE NO.	SHEET NO.
1-5987B	EC-68/CONST.22
RW SHEET NO.	
ROADSIDE ENVIRONMENTAL PROJECT ENGINEER	
LEVEL III CERTIFIED BY: MATTHEW HARVEY, PE CERTIFICATION NUMBER: 3487 ISSUED: MARCH 15, 2022	

ETHERILL ENGINEERING

1223 Jones Franklin Rd.
Raleigh, N.C. 27606
License No. F-0377
Bus: 919 851 8077
Fax: 919 851 8107

TRANSPORTATION PLANNING/DESIGN - BRIDGE/STRUCTURE DESIGN
CIVIL/SITE DESIGN - GIS/GPS - CONSTRUCTION OBSERVATION

PI STA. 727+38.59
Δ = 11° 39' 04.3" (LT)
D = 0' 39' 58.4"
L = 1,748.82'
T = 877.44'
R = 8,600.00'
SE = 0.03

-SR3-
PI STA. 43+01.14
Δ = 81° 52' 36.4" (RT)
D = 11' 48' 48.8"
L = 693.07'
T = 420.69'
R = 485.00'
SE = 0.06
RO = SEE PLANS

-SR3- STA. 42+50.00 SEE SHEET NO. 43

MATCHLINE -L- STA. 722+00.00 SEE SHEET NO. 21

MATCHLINE -L- STA. 734+00.00 SEE SHEET NO. 23

