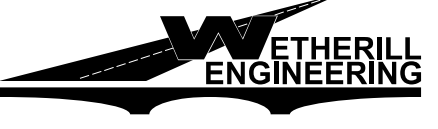
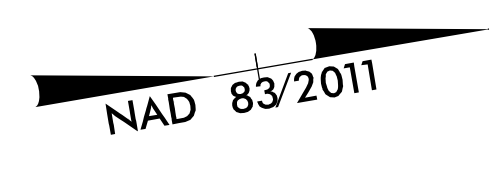


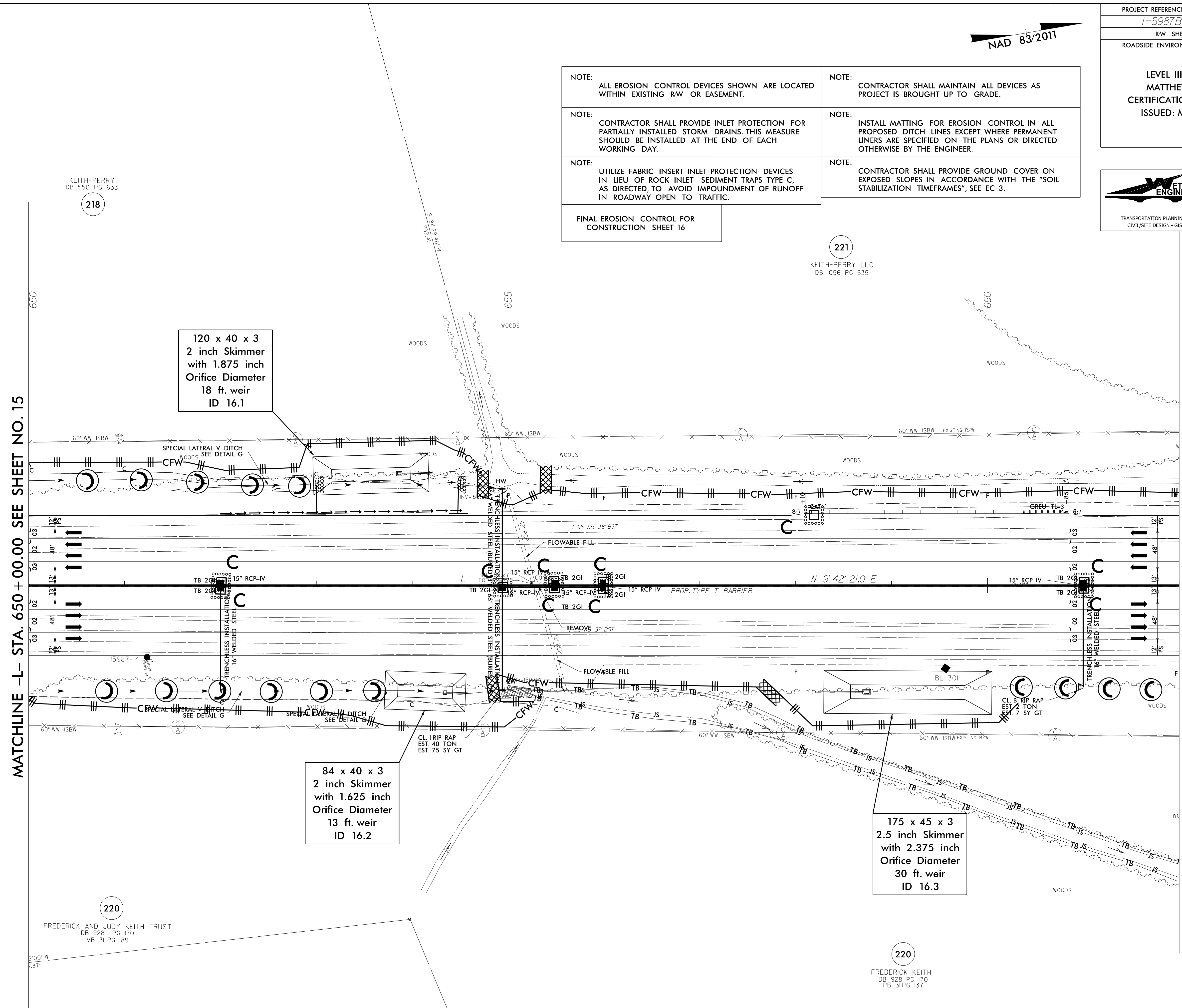
5/14/2022

3/14/2022
E:\gston_Central\15987B-EC_PSH-16-f.inel.dgn
Matt MacDonald

PROJECT REFERENCE NO.	SHEET NO.
1-5987B	EC-62/CONST.16
RW SHEET NO.	
ROADSIDE ENVIRONMENTAL PROJECT ENGINEER	
LEVEL III CERTIFIED BY: MATTHEW HARVEY, PE CERTIFICATION NUMBER: 3487 ISSUED: MARCH 15, 2022	
	
1223 Jones Franklin Rd. Raleigh, N.C. 27606 License No. F-0377 Bus: 919 851 8077 Fax: 919 851 8107	
TRANSPORTATION PLANNING/DESIGN - BRIDGE/STRUCTURE DESIGN CIVIL/SITE DESIGN - GIS/GPS - CONSTRUCTION OBSERVATION	



- | | |
|--|--|
| NOTE:
ALL EROSION CONTROL DEVICES SHOWN ARE LOCATED WITHIN EXISTING RW OR EASEMENT. | NOTE:
CONTRACTOR SHALL MAINTAIN ALL DEVICES AS PROJECT IS BROUGHT UP TO GRADE. |
| NOTE:
CONTRACTOR SHALL PROVIDE INLET PROTECTION FOR PARTIALLY INSTALLED STORM DRAINS. THIS MEASURE SHOULD BE INSTALLED AT THE END OF EACH WORKING DAY. | NOTE:
INSTALL MATTING FOR EROSION CONTROL IN ALL PROPOSED DITCH LINES EXCEPT WHERE PERMANENT LINERS ARE SPECIFIED ON THE PLANS OR DIRECTED OTHERWISE BY THE ENGINEER. |
| NOTE:
UTILIZE FABRIC INSERT INLET PROTECTION DEVICES IN LIEU OF ROCK INLET SEDIMENT TRAPS TYPE-C, AS DIRECTED, TO AVOID IMPOUNDMENT OF RUNOFF IN ROADWAY OPEN TO TRAFFIC. | NOTE:
CONTRACTOR SHALL PROVIDE GROUND COVER ON EXPOSED SLOPES IN ACCORDANCE WITH THE "SOIL STABILIZATION TIMEFRAMES", SEE EC-3. |
| FINAL EROSION CONTROL FOR
CONSTRUCTION SHEET 16 | |



120 x 40 x 3
2 inch Skimmer
with 1.875 inch
Orifice Diameter
18 ft. weir
ID 16.1

84 x 40 x 3
2 inch Skimmer
with 1.625 inch
Orifice Diameter
13 ft. weir
ID 16.2

175 x 45 x 3
2.5 inch Skimmer
with 2.375 inch
Orifice Diameter
30 ft. weir
ID 16.3

MATCHLINE -L- STA. 650 + 00.00 SEE SHEET NO. 15

MATCHLINE -L- STA. 662 + 00.00 SEE SHEET NO. 17

KEITH-PERRY
DB 550 PG 633
218

221
KEITH-PERRY LLC
DB 1056 PG 535

220
FREDERICK AND JUDY KEITH TRUST
DB 928 PG 170
MB 31 PG 189

220
FREDERICK KEITH
DB 928 PG 170
PB 31 PG 137