

5/14/2022

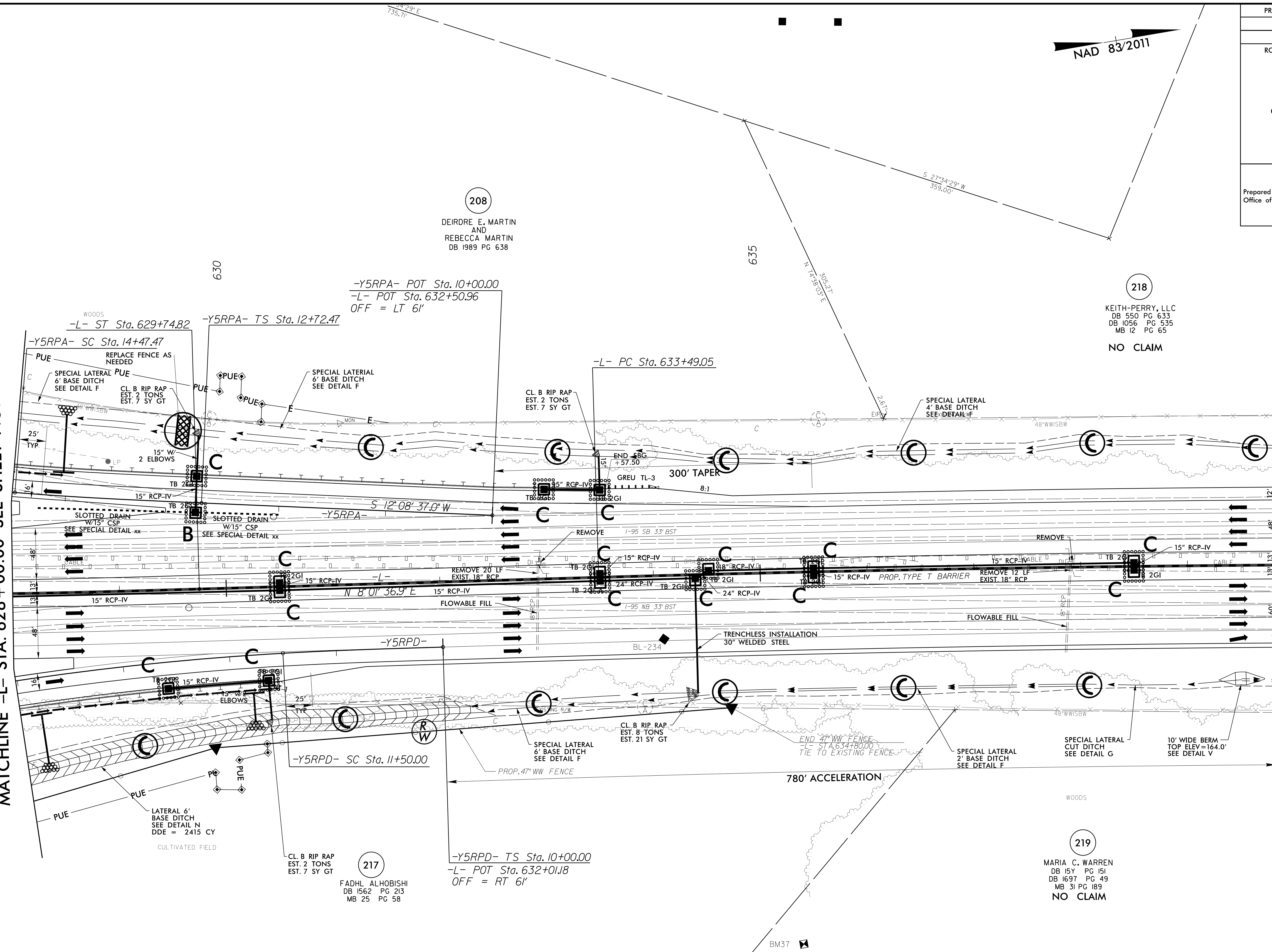
R:\Erosion\3/14/2022\15987b-EC.psh60_.final.dgn
Mott MacDonald

PROJECT REFERENCE NO.	SHEET NO.
1-5987B	EC-60/CONST.14
RW SHEET NO.	
ROADSIDE ENVIRONMENTAL PROJECT ENGINEER	
LEVEL III CERTIFIED BY: ELENI M. RIGGS, PE CERTIFICATION NUMBER: 3056 ISSUED: MARCH 15, 2022	
Prepared in the Office of:	M MOTT MACDONALD 7621 Purfoy Rd, Suite 115 Fuquay-Varina, NC 27526 www.mottmac.com/americas

FINAL EROSION CONTROL FOR CONSTRUCTION SHEET 14

MATCHLINE -L- STA. 628 + 00.00 SEE SHEET NO. 13

MATCHLINE -L- STA. 640 + 00.00 SEE SHEET NO. 15



208
DEIRDRE E. MARTIN
AND
REBECCA MARTIN
DB 1989 PG 638

218
KEITH-PERRY, LLC
DB 550 PG 633
DB 1056 PG 535
MB 12 PG 65
NO CLAIM

217
FADHL ALHOBISHI
DB 1562 PG 213
MB 25 PG 58

219
MARIA C. WARREN
DB 159 PG 151
DB 1697 PG 49
MB 31 PG 189
NO CLAIM

NOTE:
UTILIZE FABRIC INSERT INLET PROTECTION DEVICES IN LIEU OF ROCK INLET SEDIMENT TRAPS TYPE-C, AS DIRECTED TO AVOID IMPOUNDMENT OF RUNOFF IN ROADWAY OPEN TO TRAFFIC.

NOTE:
ALL EROSION CONTROL DEVICES SHOWN ARE LOCATED WITHIN EXISTING RW OR EASEMENT.

NOTE:
CONTRACTOR SHALL PROVIDE INLET PROTECTION FOR PARTIALLY INSTALLED STORM DRAINS. THIS MEASURE SHOULD BE INSTALLED AT THE END OF EACH WORKING DAY.

NOTE:
CONTRACTOR SHALL PROVIDE GROUND COVER ON EXPOSED SLOPES IN ACCORDANCE WITH THE "SOIL STABILIZATION TIMEFRAMES", SEE EC-3.

NOTE:
CONTRACTOR SHALL MAINTAIN ALL DEVICES AS PROJECT IS BROUGHT UP TO GRADE.

NOTE:
INSTALL MATTING FOR EROSION CONTROL IN ALL PROPOSED DITCH LINES EXCEPT WHERE PERMANENT LINERS ARE SPECIFIED ON THE PLANS OR DIRECTED OTHERWISE BY THE ENGINEER.