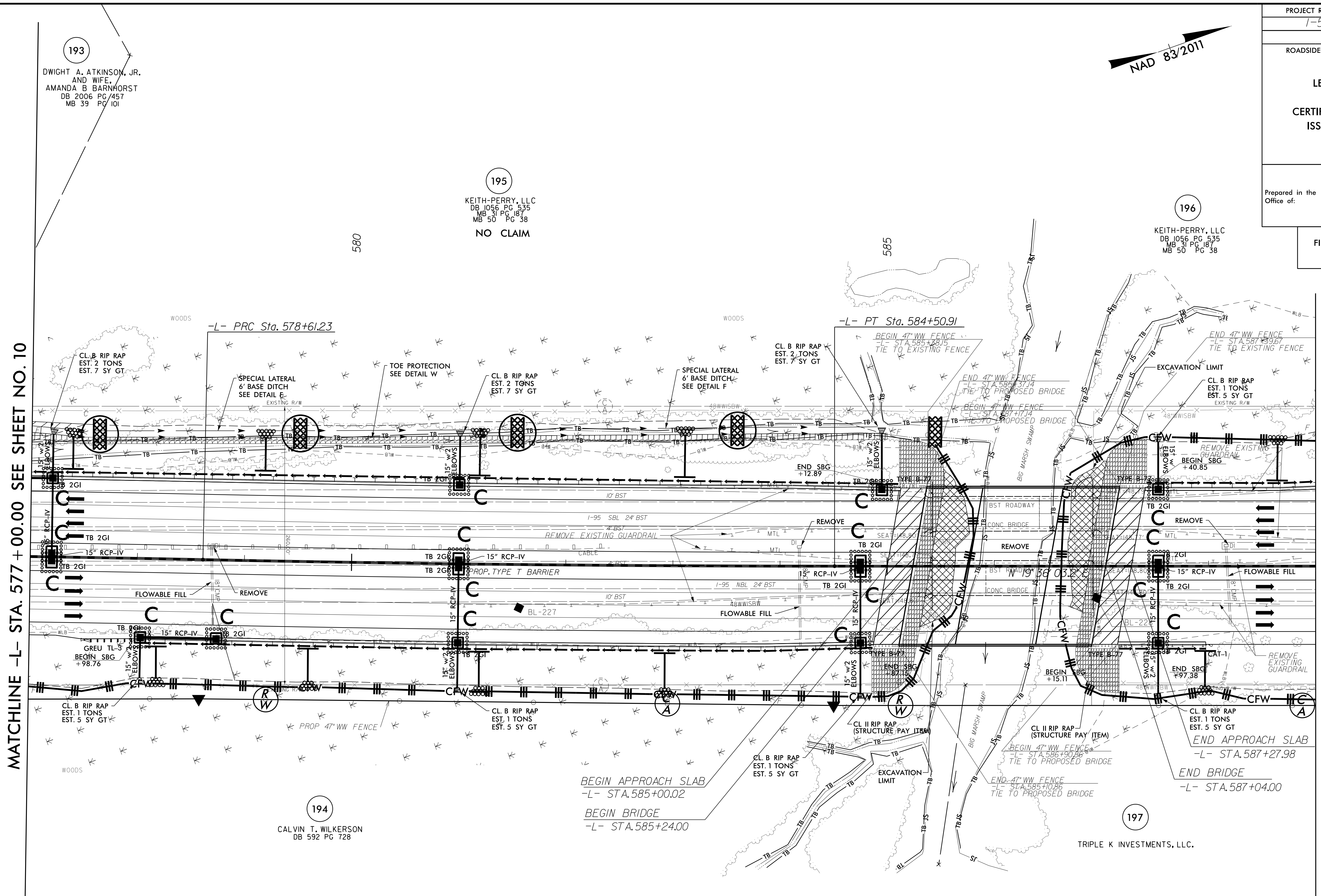
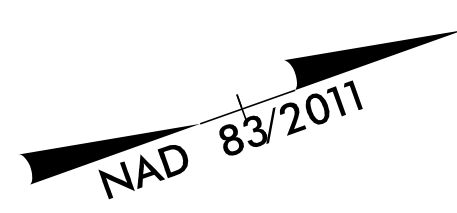


LEVEL III CERTIFIED BY:
 ELENI M. RIGGS, PE
 CERTIFICATION NUMBER: 3056
 ISSUED: MARCH 15, 2022

Prepared in the Office of:
M MOTT MACDONALD
 7621 Purfoy Rd, Suite 115
 Fuquay-Varina, NC 27526
 www.mottmac.com/americas

FINAL EROSION CONTROL FOR
 CONSTRUCTION SHEET 11



MATCHLINE -L- STA. 577 + 00.00 SEE SHEET NO. 10

MATCHLINE -L- STA. 589 + 00.00 SEE SHEET NO. 12

NOTE: UTILIZE FABRIC INSERT INLET PROTECTION DEVICES IN LIEU OF ROCK INLET SEDIMENT TRAPS TYPE-C, AS DIRECTED, TO AVOID IMPOUNDMENT OF RUNOFF IN ROADWAY OPEN TO TRAFFIC.	NOTE: CONTRACTOR SHALL PROVIDE GROUND COVER ON EXPOSED SLOPES IN ACCORDANCE WITH THE "SOIL STABILIZATION TIMEFRAMES", SEE EC-3.	NOTE: UTILIZE SPECIAL STILLING BASINS AS NEEDED.
NOTE: CONTRACTOR SHALL PROVIDE INLET PROTECTION FOR PARTIALLY INSTALLED STORM DRAINS. THIS MEASURE SHOULD BE INSTALLED AT THE END OF EACH WORKING DAY.	NOTE: CONTRACTOR SHALL MAINTAIN ALL DEVICES AS PROJECT IS BROUGHT UP TO GRADE.	NOTE: INSTALL MATTING FOR EROSION CONTROL IN ALL PROPOSED DITCH LINES EXCEPT WHERE PERMANENT LINERS ARE SPECIFIED ON THE PLANS OR DIRECTED OTHERWISE BY THE ENGINEER.

5/14/2022 3:14:20 PM R:\Erosion\1-5987b-EC.psh566.final.dgn Mott MacDonald