

NOTE: ALL EROSION CONTROL DEVICES SHOWN ARE LOCATED WITHIN EXISTING RW OR EASEMENT.

NOTE: CONTRACTOR SHALL PROVIDE INLET PROTECTION FOR PARTIALLY INSTALLED STORM DRAINS. THIS MEASURE SHOULD BE INSTALLED AT THE END OF EACH WORKING DAY.

NOTE: CONTRACTOR SHALL PROVIDE GROUND COVER ON EXPOSED SLOPES IN ACCORDANCE WITH THE "SOIL STABILIZATION TIMEFRAMES", SEE EC-3.

NOTE: CONTRACTOR SHALL MAINTAIN ALL DEVICES AS PROJECT IS BROUGHT UP TO GRADE.

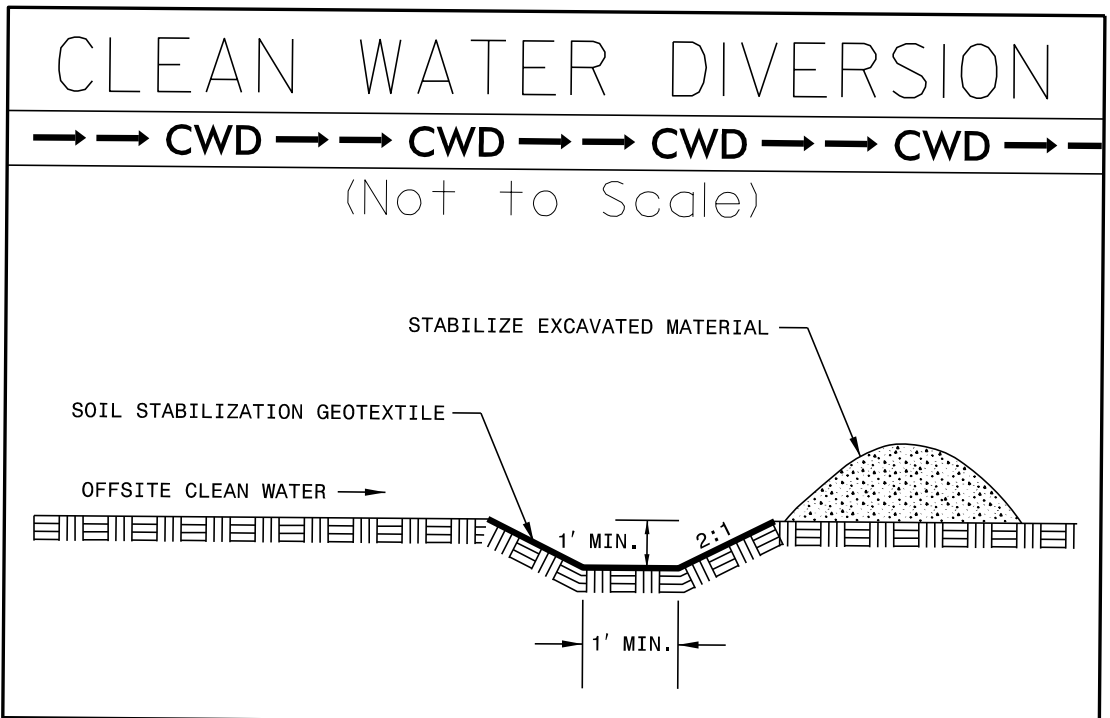
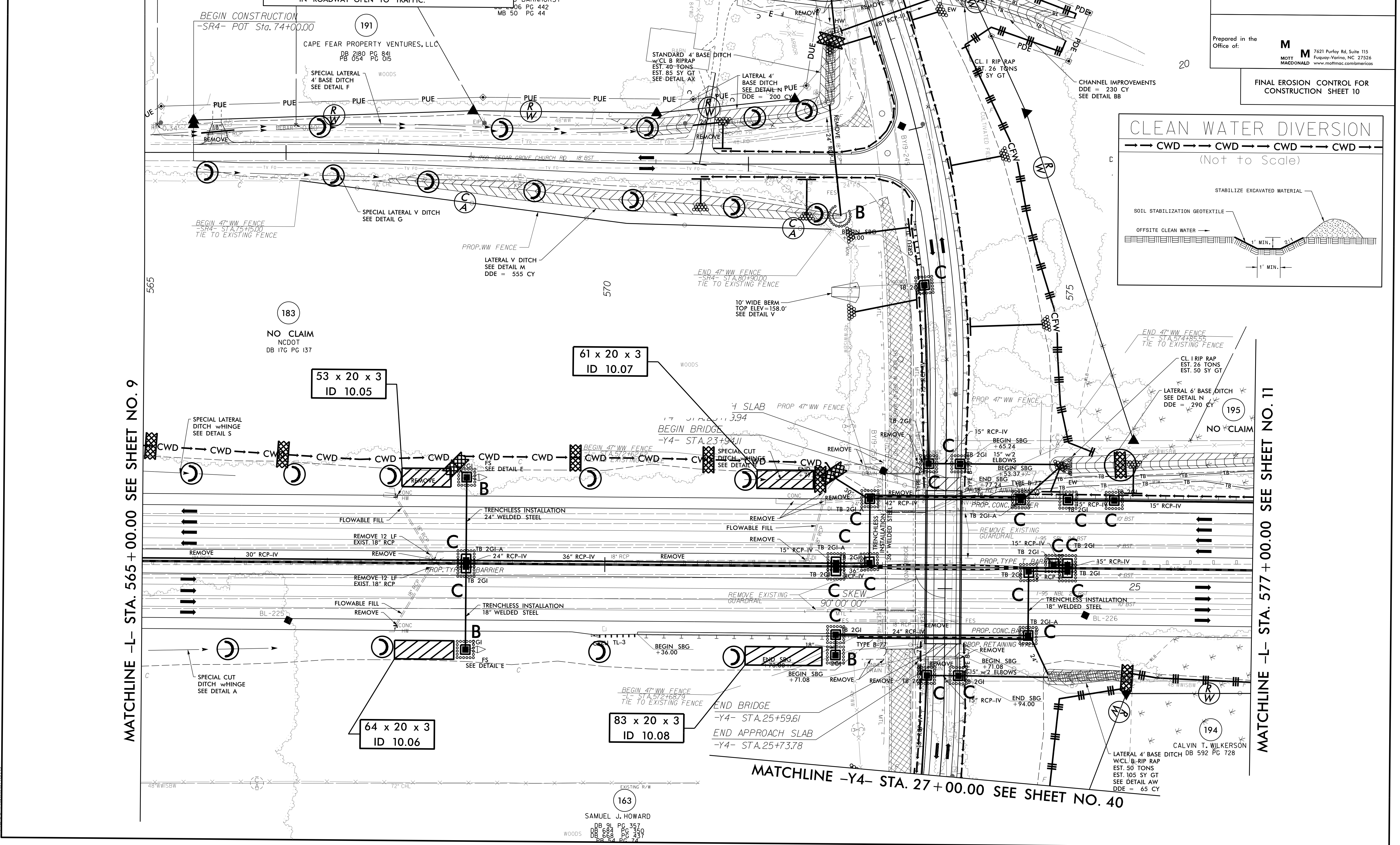
NOTE: INSTALL MATTING FOR EROSION CONTROL IN ALL PROPOSED DITCH LINES EXCEPT WHERE PERMANENT LINERS ARE SPECIFIED ON THE PLANS OR DIRECTED OTHERWISE BY THE ENGINEER.

NOTE: UTILIZE FABRIC INSERT INLET PROTECTION DEVICES IN LIEU OF ROCK INLET SEDIMENT TRAPS TYPE-C, AS DIRECTED, TO AVOID IMPOUNDMENT OF RUNOFF IN ROADWAY OPEN TO TRAFFIC.

PROJECT REFERENCE NO. 1-5987B SHEET NO. EC-55/CONST.10
 RW SHEET NO.
 ROADSIDE ENVIRONMENTAL PROJECT ENGINEER

LEVEL III CERTIFIED BY:
 ELENI M. RIGGS, PE
 CERTIFICATION NUMBER: 3056
 ISSUED: MARCH 15, 2022

Prepared in the Office of: **M**
 MOTT MACDONALD
 7621 Purfoy Rd, Suite 115
 Fuquay-Varina, NC 27516
 www.mottmac.com/america



MATCHLINE -L- STA. 565 + 00.00 SEE SHEET NO. 9

MATCHLINE -L- STA. 577 + 00.00 SEE SHEET NO. 11

MATCHLINE -Y4- STA. 27 + 00.00 SEE SHEET NO. 40

163
 SAMUEL J. HOWARD
 DB 91 PG 357
 DB 684 PG 350
 DB 669 PG 437
 DB 54 PG 74

5/14/2022 R:\Erosion_Control\15987b_EC_psh55_f.mxd Mott MacDonald