

5/14/2022 3:14:2022 \\F5987b-EC.psh54-final.dgn Mott MacDonald

NOTE: ALL EROSION CONTROL DEVICES SHOWN ARE LOCATED WITHIN EXISTING RW OR EASEMENT.

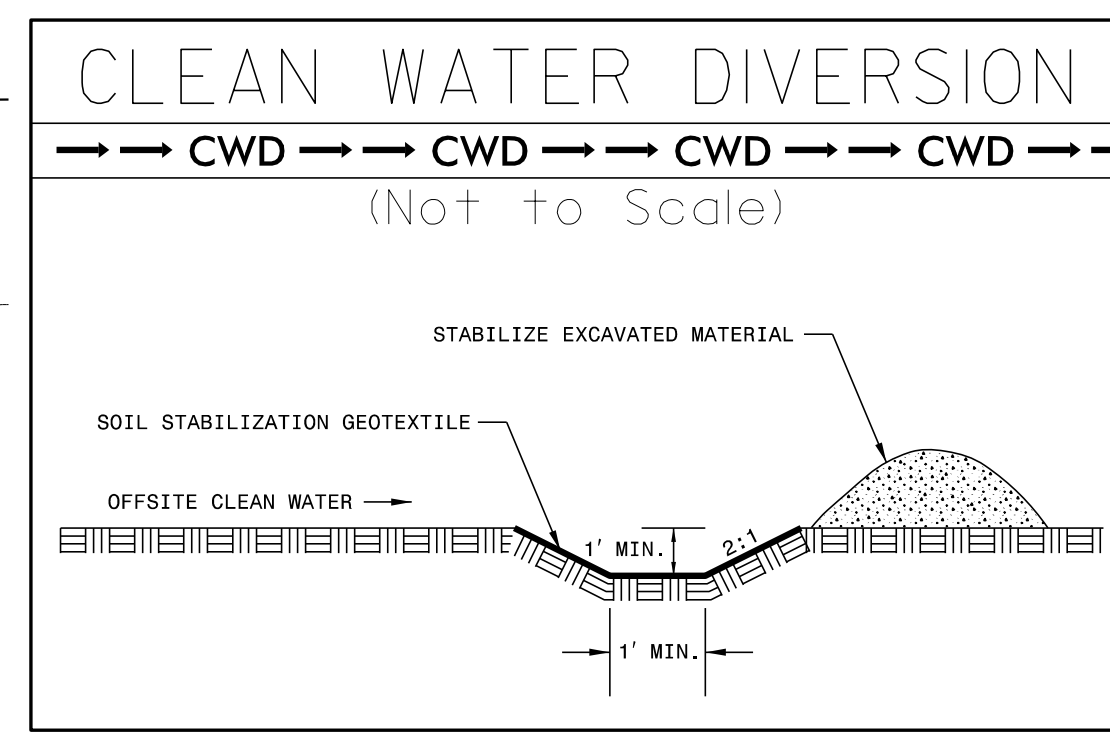
NOTE: CONTRACTOR SHALL PROVIDE INLET PROTECTION FOR PARTIALLY INSTALLED STORM DRAINS. THIS MEASURE SHOULD BE INSTALLED AT THE END OF EACH WORKING DAY.

NOTE: CONTRACTOR SHALL PROVIDE GROUND COVER ON EXPOSED SLOPES IN ACCORDANCE WITH THE "SOIL STABILIZATION TIMEFRAMES", SEE EC-3.

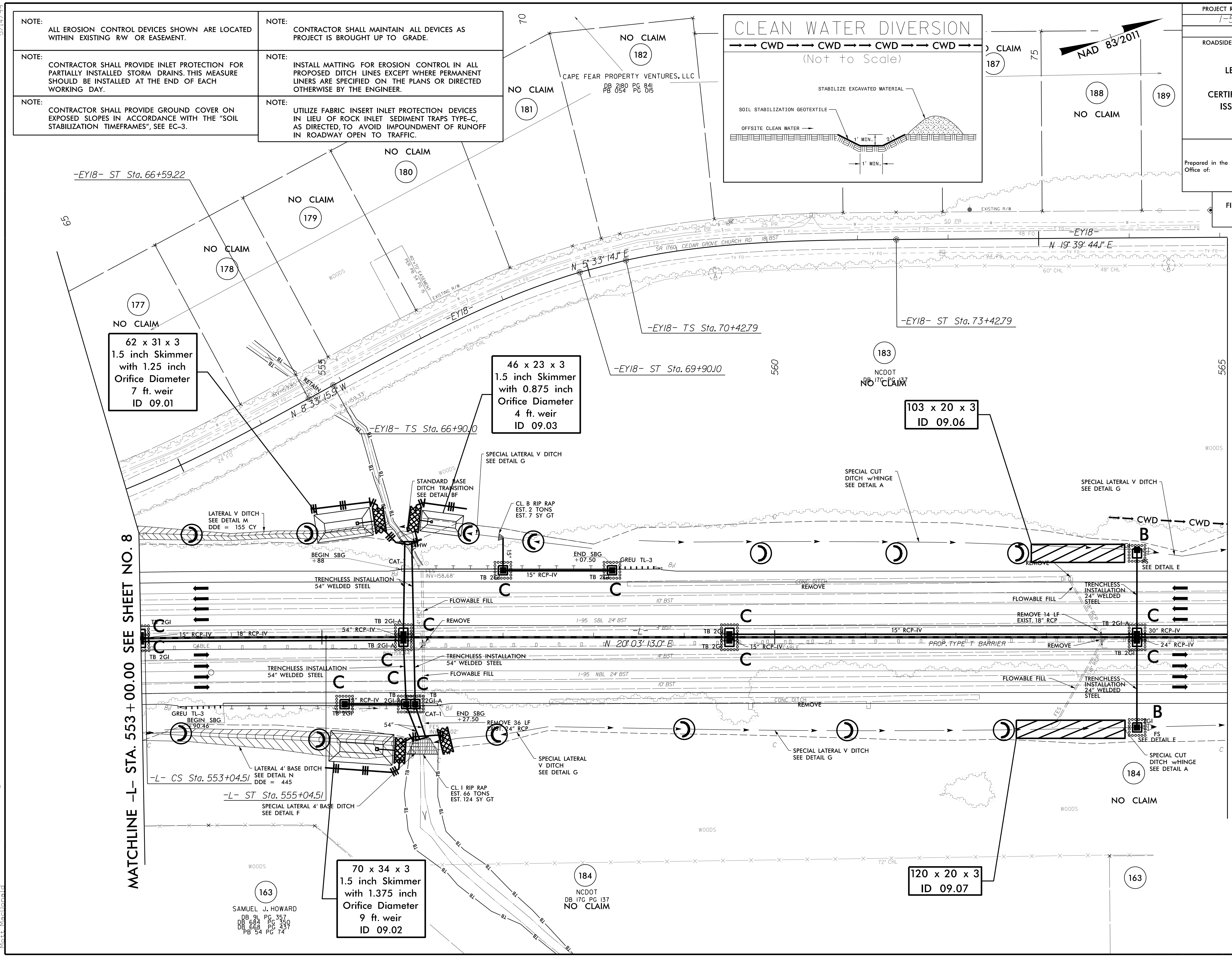
NOTE: CONTRACTOR SHALL MAINTAIN ALL DEVICES AS PROJECT IS BROUGHT UP TO GRADE.

NOTE: INSTALL MATTING FOR EROSION CONTROL IN ALL PROPOSED DITCH LINES EXCEPT WHERE PERMANENT LINERS ARE SPECIFIED ON THE PLANS OR DIRECTED OTHERWISE BY THE ENGINEER.

NOTE: UTILIZE FABRIC INSERT INLET PROTECTION DEVICES IN LIEU OF ROCK INLET SEDIMENT TRAPS TYPE-C, AS DIRECTED, TO AVOID IMPOUNDMENT OF RUNOFF IN ROADWAY OPEN TO TRAFFIC.



PROJECT REFERENCE NO. I-5987B	SHEET NO. EC-54/CONST. 9
RW SHEET NO. ROADSIDE ENVIRONMENTAL PROJECT ENGINEER	
LEVEL III CERTIFIED BY: ELENI M. RIGGS, PE CERTIFICATION NUMBER: 3056 ISSUED: MARCH 15, 2022	
Prepared in the Office of:	MOTT MACDONALD 7621 Purfoy Rd, Suite 115 Fuquay-Varina, NC 27526 www.mottmac.com/americas



MATCHLINE -L- STA. 553 + 00.00 SEE SHEET NO. 8

MATCHLINE -L- STA. 565 + 00.00 SEE SHEET NO. 10

163
SAMUEL J. HOWARD
DB 91 PG 357
DB 684 PG 360
DB 663 PG 437
PB 54 PG 74

184
NCDOT
DB 176 PG 137
NO CLAIM

120 x 20 x 3
ID 09.07

163