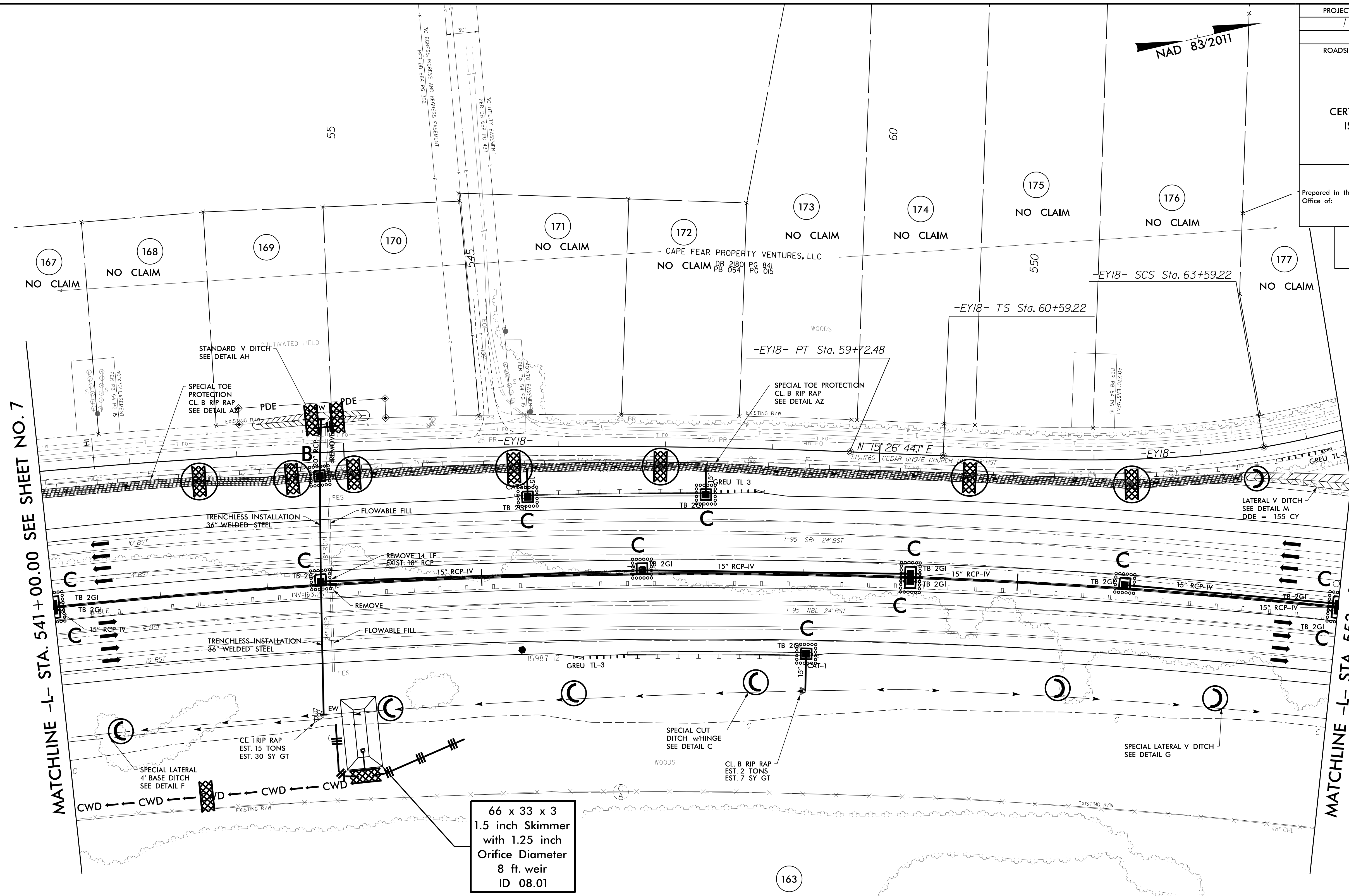


5/14/99

PROJECT REFERENCE NO. 1-5987B	SHEET NO. EC-53/CONST.8
RW SHEET NO. ROADSIDE ENVIRONMENTAL PROJECT ENGINEER	
LEVEL III CERTIFIED BY: ELENI M. RIGGS, PE CERTIFICATION NUMBER: 3056 ISSUED: MARCH 15, 2022	
Prepared in the Office of:	M MOTT MACDONALD 7621 Purfoy Rd, Suite 115 Fuquay-Varina, NC 27526 www.mottmac.com/americas

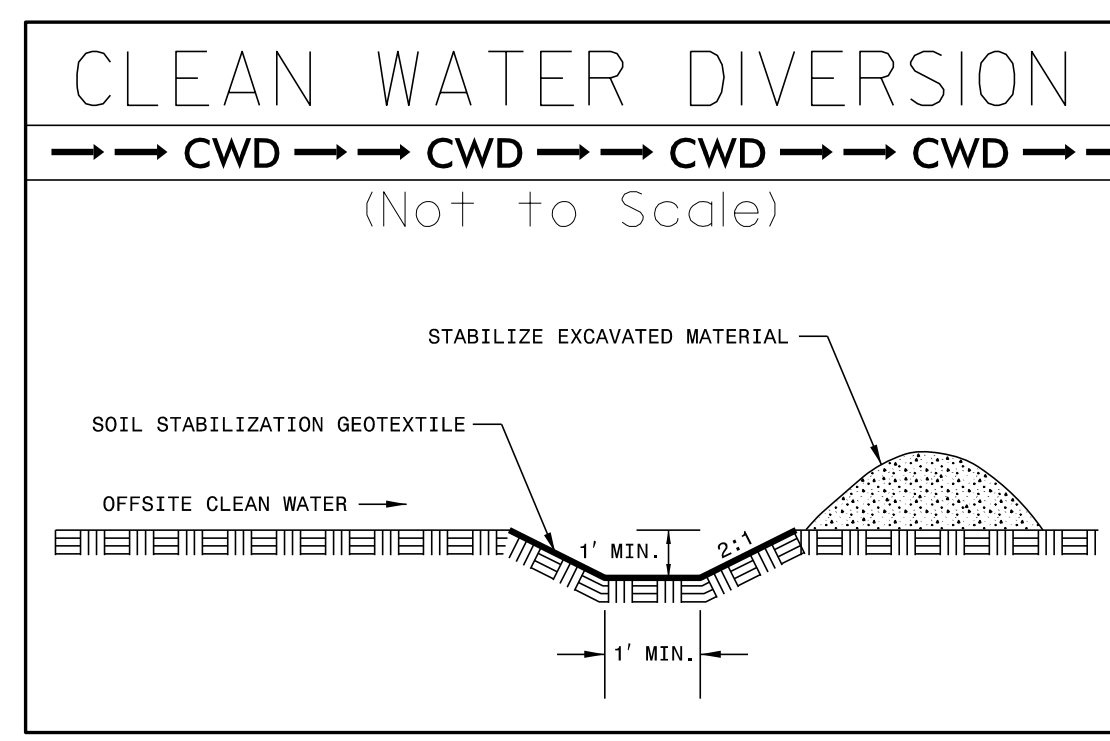
FINAL EROSION CONTROL FOR CONSTRUCTION SHEET 8



MATCHLINE -L- STA. 541 + 00.00 SEE SHEET NO. 7

MATCHLINE -L- STA. 553 + 00.00 SEE SHEET NO. 9

66 x 33 x 3
1.5 inch Skimmer
with 1.25 inch
Orifice Diameter
8 ft. weir
ID 08.01



- | | |
|--|--|
| NOTE:
UTILIZE FABRIC INSERT INLET PROTECTION DEVICES IN LIEU OF ROCK INLET SEDIMENT TRAPS TYPE-C, AS DIRECTED, TO AVOID IMPOUNDMENT OF RUNOFF IN ROADWAY OPEN TO TRAFFIC. | NOTE:
CONTRACTOR SHALL PROVIDE GROUND COVER ON EXPOSED SLOPES IN ACCORDANCE WITH THE "SOIL STABILIZATION TIMEFRAMES", SEE EC-3. |
| NOTE:
ALL EROSION CONTROL DEVICES SHOWN ARE LOCATED WITHIN EXISTING RW OR EASEMENT. | NOTE:
CONTRACTOR SHALL MAINTAIN ALL DEVICES AS PROJECT IS BROUGHT UP TO GRADE. |
| NOTE:
CONTRACTOR SHALL PROVIDE INLET PROTECTION FOR PARTIALLY INSTALLED STORM DRAINS. THIS MEASURE SHOULD BE INSTALLED AT THE END OF EACH WORKING DAY. | NOTE:
INSTALL MATTING FOR EROSION CONTROL IN ALL PROPOSED DITCH LINES EXCEPT WHERE PERMANENT LINERS ARE SPECIFIED ON THE PLANS OR DIRECTED OTHERWISE BY THE ENGINEER. |

R:\Erosion\3/14/2022\1-5987b-EC.psh53_final.dgn