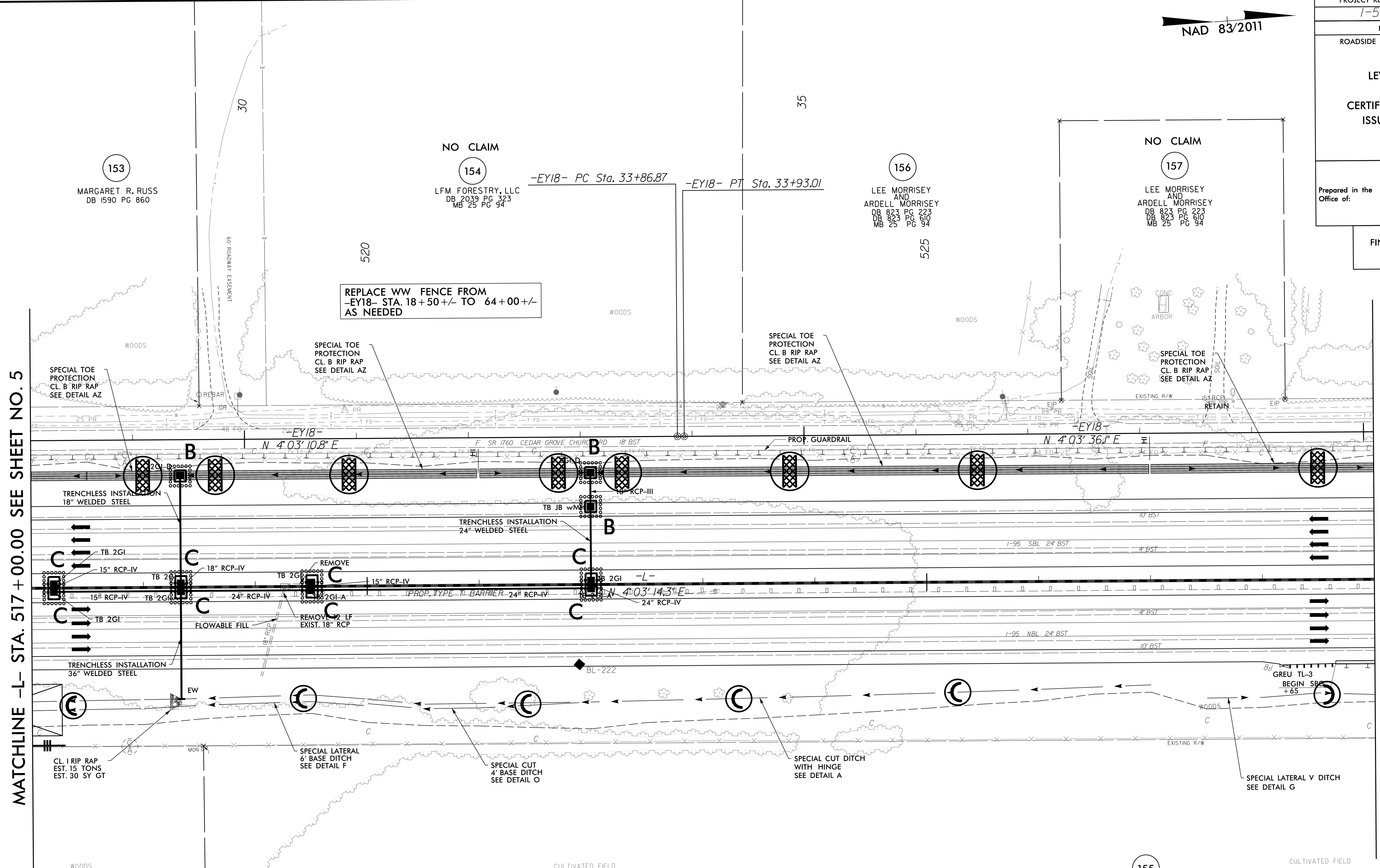


5/14/199

3/14/2022
R:\Erosion_Control\15987b_EC_psh51.frm1.dgn
MOTT MACDONALD

PROJECT REFERENCE NO. 1-5987B	SHEET NO. EC-51/CONST.6
RW SHEET NO.	
ROADSIDE ENVIRONMENTAL PROJECT ENGINEER	
LEVEL III CERTIFIED BY: ELENI M. RIGGS, PE CERTIFICATION NUMBER: 3056 ISSUED: MARCH 15, 2022	
Prepared in the Office of:	M MOTT MACDONALD 7421 Purfoy Rd, Suite 115 Fuquay-Varina, NC 27526 www.mottmac.com/americas

FINAL EROSION CONTROL FOR CONSTRUCTION SHEET 6



MATCHLINE -L- STA. 517 + 00.00 SEE SHEET NO. 5

MATCHLINE -L- STA. 529 + 00.00 SEE SHEET NO. 7

NAD 83/2011

NOTE: UTILIZE FABRIC INSERT INLET PROTECTION DEVICES IN LIEU OF ROCK INLET SEDIMENT TRAPS TYPE-C, AS DIRECTED, TO AVOID IMPOUNDMENT OF RUNOFF IN ROADWAY OPEN TO TRAFFIC.	NOTE: CONTRACTOR SHALL PROVIDE GROUND COVER ON EXPOSED SLOPES IN ACCORDANCE WITH THE "SOIL STABILIZATION TIMEFRAMES", SEE EC-3.
NOTE: ALL EROSION CONTROL DEVICES SHOWN ARE LOCATED WITHIN EXISTING R/W OR EASEMENT.	NOTE: CONTRACTOR SHALL MAINTAIN ALL DEVICES AS PROJECT IS BROUGHT UP TO GRADE.
NOTE: CONTRACTOR SHALL PROVIDE INLET PROTECTION FOR PARTIALLY INSTALLED STORM DRAINS. THIS MEASURE SHOULD BE INSTALLED AT THE END OF EACH WORKING DAY.	NOTE: INSTALL MATTING FOR EROSION CONTROL IN ALL PROPOSED DITCH LINES EXCEPT WHERE PERMANENT LINERS ARE SPECIFIED ON THE PLANS OR DIRECTED OTHERWISE BY THE ENGINEER.