

LEVEL III CERTIFIED BY:
 ELENI M. RIGGS, PE
 CERTIFICATION NUMBER: 3056
 ISSUED: MARCH 15, 2022

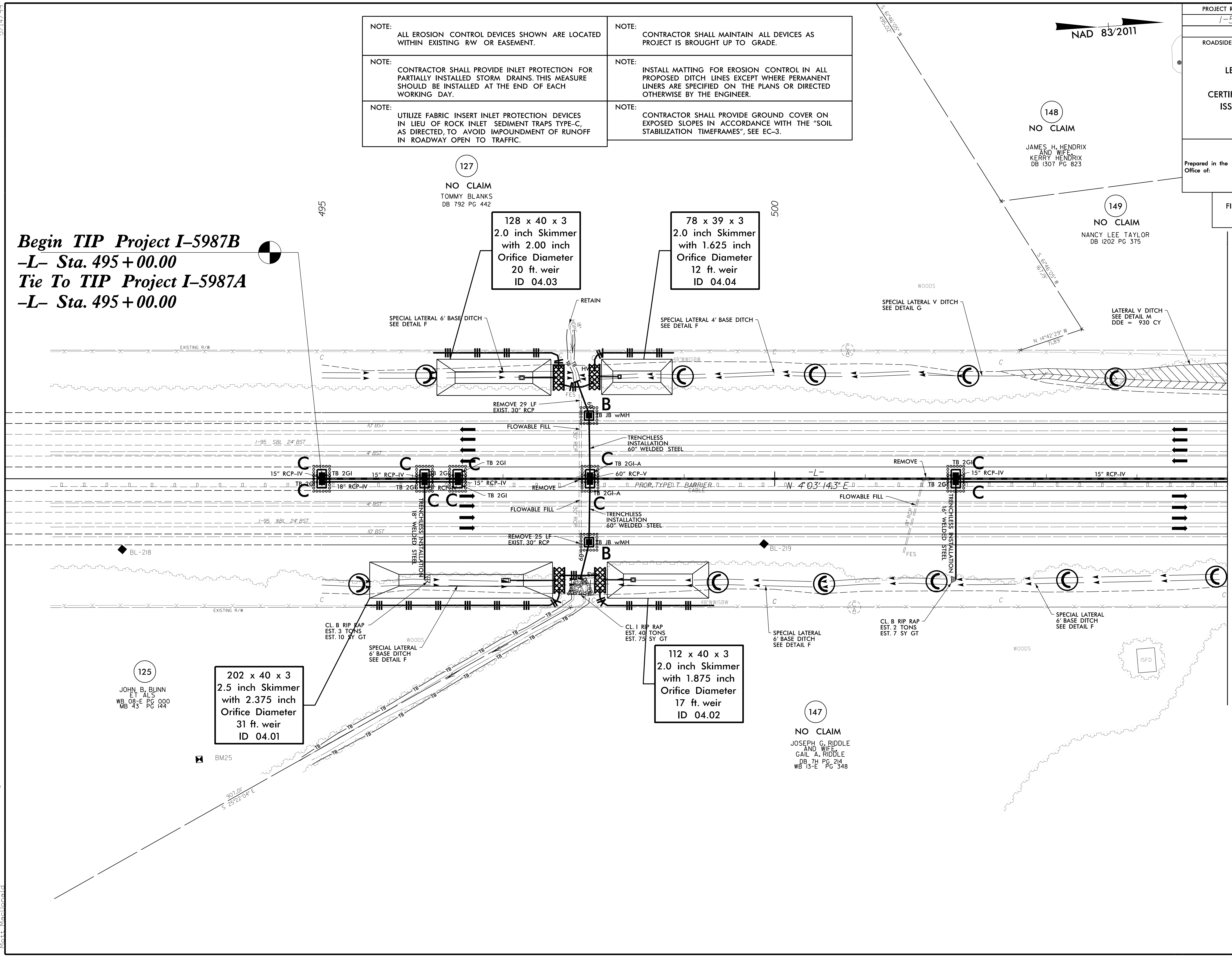
Prepared in the Office of:
M MOTT MACDONALD
 7621 Purfoy Rd, Suite 115
 Fuquay-Varina, NC 27526
 www.mottmac.com/americas

FINAL EROSION CONTROL FOR CONSTRUCTION SHEET 4

- | | |
|---|---|
| NOTE: ALL EROSION CONTROL DEVICES SHOWN ARE LOCATED WITHIN EXISTING R/W OR EASEMENT. | NOTE: CONTRACTOR SHALL MAINTAIN ALL DEVICES AS PROJECT IS BROUGHT UP TO GRADE. |
| NOTE: CONTRACTOR SHALL PROVIDE INLET PROTECTION FOR PARTIALLY INSTALLED STORM DRAINS. THIS MEASURE SHOULD BE INSTALLED AT THE END OF EACH WORKING DAY. | NOTE: INSTALL MATTING FOR EROSION CONTROL IN ALL PROPOSED DITCH LINES EXCEPT WHERE PERMANENT LINERS ARE SPECIFIED ON THE PLANS OR DIRECTED OTHERWISE BY THE ENGINEER. |
| NOTE: UTILIZE FABRIC INSERT INLET PROTECTION DEVICES IN LIEU OF ROCK INLET SEDIMENT TRAPS TYPE-C, AS DIRECTED, TO AVOID IMPOUNDMENT OF RUNOFF IN ROADWAY OPEN TO TRAFFIC. | NOTE: CONTRACTOR SHALL PROVIDE GROUND COVER ON EXPOSED SLOPES IN ACCORDANCE WITH THE "SOIL STABILIZATION TIMEFRAMES", SEE EC-3. |

Begin TIP Project I-5987B
-L- Sta. 495 + 00.00
Tie To TIP Project I-5987A
-L- Sta. 495 + 00.00

5/14/2022
 R:\Erosion\3/14/2022\I-5987b-EC.psh49_final.dgn
 Mott MacDonald



MATCHLINE -L- STA. 505 + 00.00 SEE SHEET NO. 5