

CLEARING AND GRUBBING EROSION CONTROL FOR CONSTRUCTION SHEET 47

NOTE: ALL EROSION CONTROL DEVICES SHOWN ARE LOCATED WITHIN EXISTING RW OR EASEMENT.

NOTE: PLACE TEMPORARY ROCK SEDIMENT DAMS TYPE - B AND TEMPORARY ROCK SILT CHECKS TYPE - A AT DRAINAGE OUTLETS.

NOTE: PERIMETER EROSION CONTROL MEASURES SHALL BE INSTALLED DURING CLEARING AND GRUBBING PHASE.

NOTE: CONTRACTOR SHALL PROVIDE GROUND COVER ON EXPOSED SLOPES IN ACCORDANCE WITH THE "SOIL STABILIZATION TIMEFRAMES", SEE EC-3.

NOTE: PRIOR TO INSTALLATION OF EROSION CONTROL DEVICES, CONTRACTOR SHALL VERIFY BOUNDARIES OF JURISDICTIONAL AREAS AND DELINEATE WITH SAFETY FENCE OR FLAGGING.

PROJECT REFERENCE NO.	SHEET NO.
1-5897B	EC-48/CONST.47
RW SHEET NO.	
ROADSIDE ENVIRONMENTAL PROJECT ENGINEER	
LEVEL III CERTIFIED BY: MATTHEW HARVEY, PE CERTIFICATION NUMBER: 3487 ISSUED: MARCH 15, 2022	

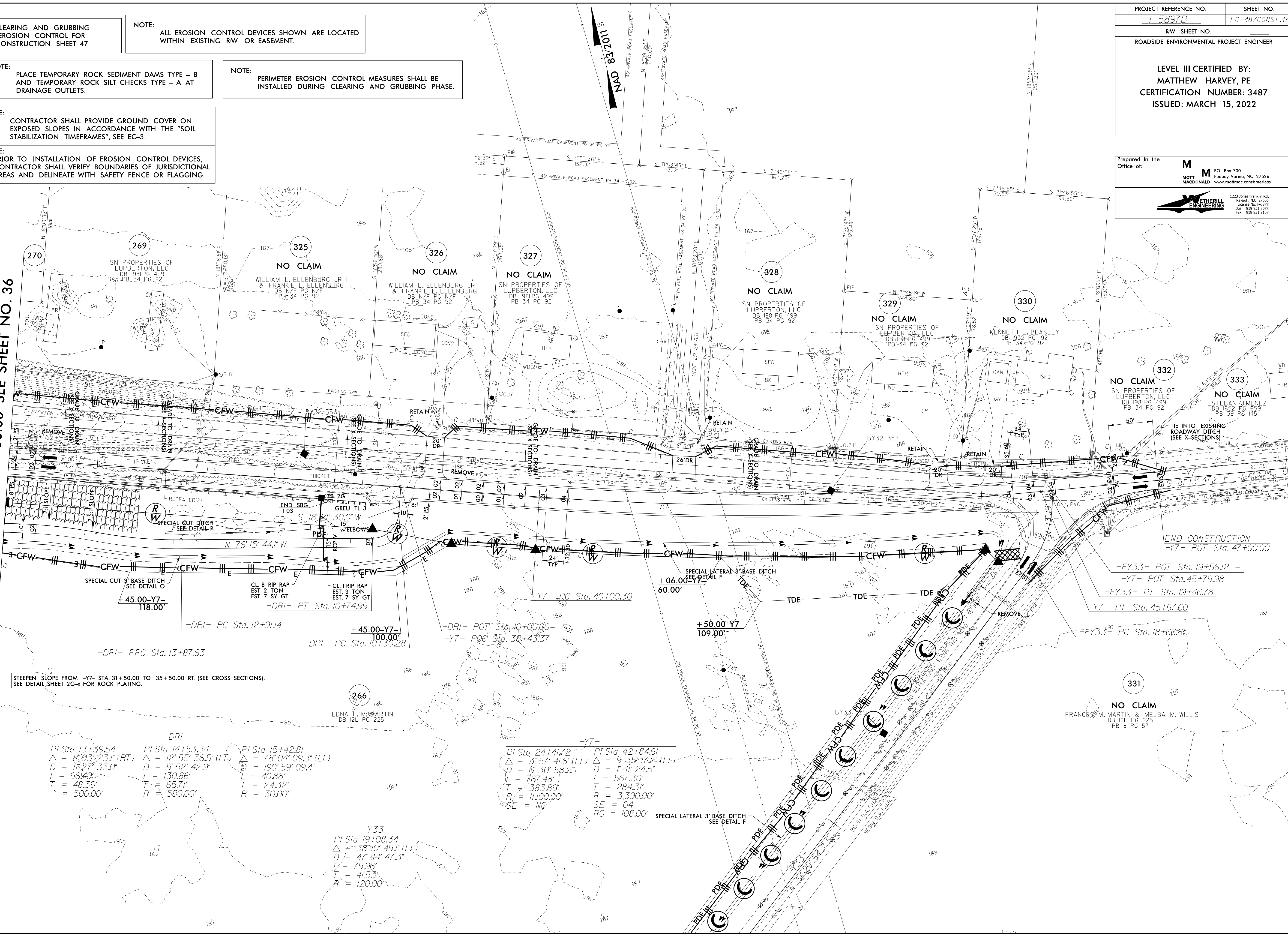
Prepared in the Office of:

M M
MOTT MACDONALD

1223 Jones Franklin Rd.
Raleigh, N.C. 27606
License No. 14377
Bus: 919.851.8077
Fax: 919.851.9107

ETHERILL ENGINEERING

MATCHLINE -Y7- STA. 34 + 00.00 SEE SHEET NO. 36



STEEPEN SLOPE FROM -Y7- STA. 31+50.00 TO 35+50.00 RT. (SEE CROSS SECTIONS). SEE DETAIL SHEET 26-x FOR ROCK PLATING.

-DRI-		
PI Sta 13+39.54	PI Sta 14+53.34	PI Sta 15+42.81
$\Delta = 11^{\circ}03'23.1''$ (RT)	$\Delta = 12^{\circ}55'36.5''$ (LT)	$\Delta = 78^{\circ}04'09.3''$ (LT)
D = 11'27'33.0"	D = 9'52'42.9"	D = 190'59'09.4"
L = 96.49'	L = 130.86'	L = 40.88'
T = 48.39'	T = 65.71'	T = 24.32'
R = 500.00'	R = 580.00'	R = 30.00'

-Y33-	
PI Sta 19+08.34	$\Delta = 38^{\circ}10'49.1''$ (LT)
D = 47'44'47.3"	L = 79.96'
T = 41.53'	R = 120.00'

-Y7-	
PI Sta 24+41.72	PI Sta 42+84.61
$\Delta = 3^{\circ}57'41.6''$ (LT)	$\Delta = 9^{\circ}35'17.2''$ (LT)
D = 0'30'58.2"	D = 1'41'24.5"
L = 767.48'	L = 567.30'
T = 383.89'	T = 284.31'
R = 11,000.00'	R = 3,390.00'
SE = NC	SE = 04
RO = 108.00'	RO = 108.00'