

5/14/99

**CLEARING AND GRUBBING
EROSION CONTROL FOR
CONSTRUCTION SHEET 46**

NOTE:
PLACE TEMPORARY ROCK SEDIMENT DAMS TYPE - B
AND TEMPORARY ROCK SILT CHECKS TYPE - A AT
DRAINAGE OUTLETS.

NOTE:
PERIMETER EROSION CONTROL MEASURES SHALL BE
INSTALLED DURING CLEARING AND GRUBBING PHASE.

NOTE:
CONTRACTOR SHALL PROVIDE GROUND COVER ON
EXPOSED SLOPES IN ACCORDANCE WITH THE "SOIL
STABILIZATION TIMEFRAMES", SEE EC-3.

NOTE:
PRIOR TO INSTALLATION OF EROSION CONTROL DEVICES,
CONTRACTOR SHALL VERIFY BOUNDARIES OF JURISDICTIONAL
AREAS AND DELINEATE WITH SAFETY FENCE OR FLAGGING.

NOTE:
ALL EROSION CONTROL DEVICES SHOWN ARE LOCATED
WITHIN EXISTING RW OR EASEMENT.

PROJECT REFERENCE NO. SHEET NO.
1-5897B EC-47/CONST.46

RW SHEET NO.
ROADSIDE ENVIRONMENTAL PROJECT ENGINEER

LEVEL III CERTIFIED BY:
MATTHEW HARVEY, PE
CERTIFICATION NUMBER: 3487
ISSUED: MARCH 15, 2022

Prepared in the Office of:

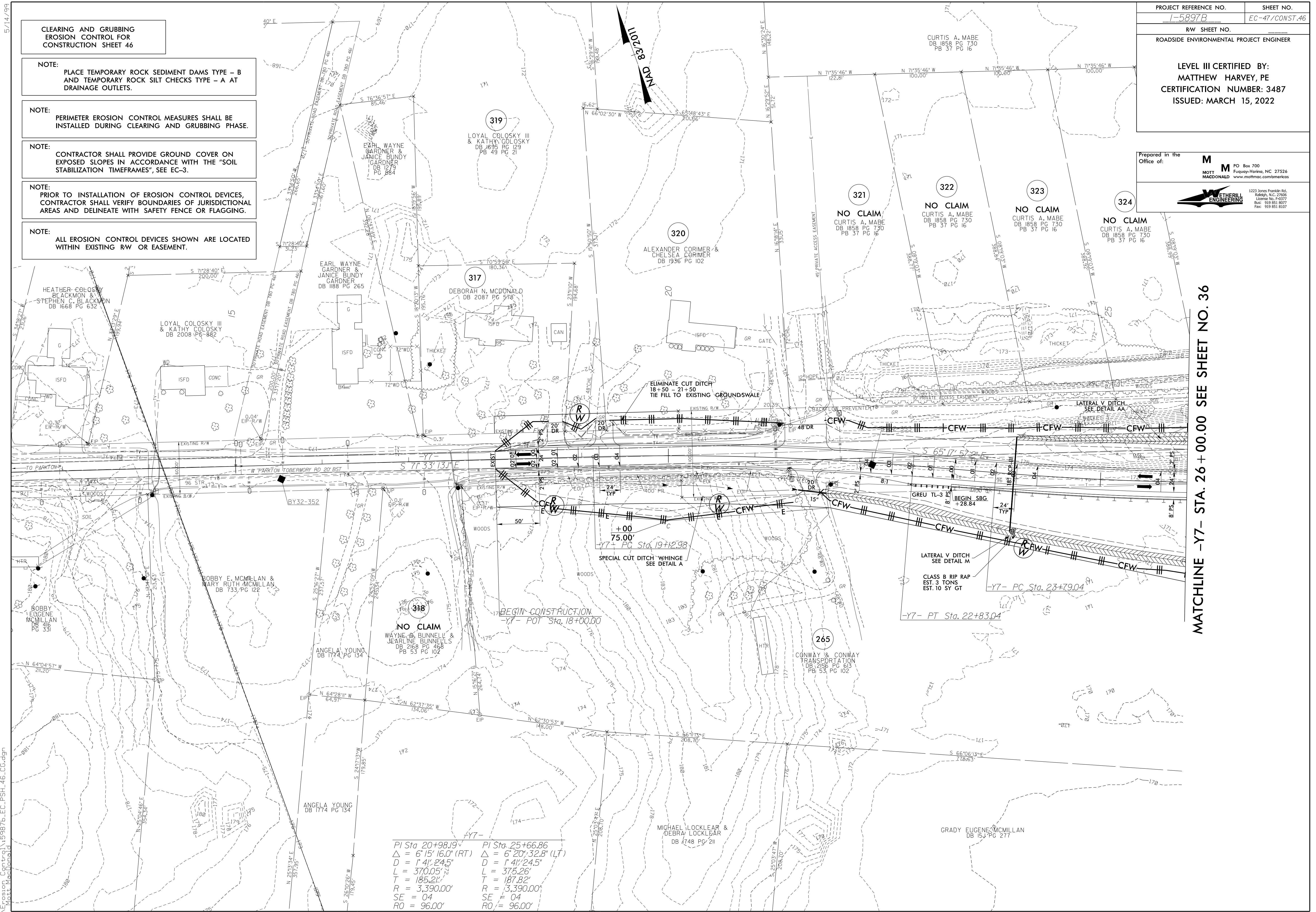
M M
MOTT
MACDONALD

PO Box 700
Fuquay-Varina, NC 27526
www.mottmac.com/americas

**METHERILL
ENGINEERING**

1223 Jones Franklin Rd.
Raleigh, N.C. 27606
License No. 14377
Bus: 919.851.8077
Fax: 919.851.9107

MATCHLINE -Y7- STA. 26 + 00.00 SEE SHEET NO. 36



PI Sta 20+98.19	PI Sta 25+66.86
$\Delta = 6^{\circ}15'16.0''$ (RT)	$\Delta = 6^{\circ}20'32.8''$ (LT)
$D = 1^{\circ}41'24.5''$	$D = 1^{\circ}41'24.5''$
$L = 370.05'$	$L = 375.26'$
$T = 185.21'$	$T = 187.82'$
$R = 3,390.00'$	$R = 3,390.00'$
$SE = 04$	$SE = 04$
$RO = 96.00'$	$RO = 96.00'$

3/14/2022
Erosion Control\15897b.ec_psh_46.cg.dgn
Mott MacDonald