

5/14/99

CLEARING AND GRUBBING  
EROSION CONTROL FOR  
CONSTRUCTION SHEET 29

UTILIZED SPECIAL  
STILLING BASINS  
AS NEEDED

NOTE:  
PLACE TEMPORARY ROCK SEDIMENT DAMS TYPE - B  
AND TEMPORARY ROCK SILT CHECKS TYPE - A AT  
DRAINAGE OUTLETS.

NOTE:  
PERIMETER EROSION CONTROL MEASURES SHALL BE  
INSTALLED DURING CLEARING AND GRUBBING PHASE.

NOTE:  
CONTRACTOR SHALL PROVIDE GROUND COVER ON  
EXPOSED SLOPES IN ACCORDANCE WITH THE "SOIL  
STABILIZATION TIMEFRAMES", SEE EC-3.

NOTE:  
PRIOR TO INSTALLATION OF EROSION CONTROL DEVICES,  
CONTRACTOR SHALL VERIFY BOUNDARIES OF JURISDICTIONAL  
AREAS AND DELINEATE WITH SAFETY FENCE OR FLAGGING.

NOTE:  
ALL EROSION CONTROL DEVICES SHOWN ARE LOCATED  
WITHIN EXISTING RW OR EASEMENT.

NAD 83/2011

PROJECT REFERENCE NO. SHEET NO.  
1-5897B EC-30/CONST.29

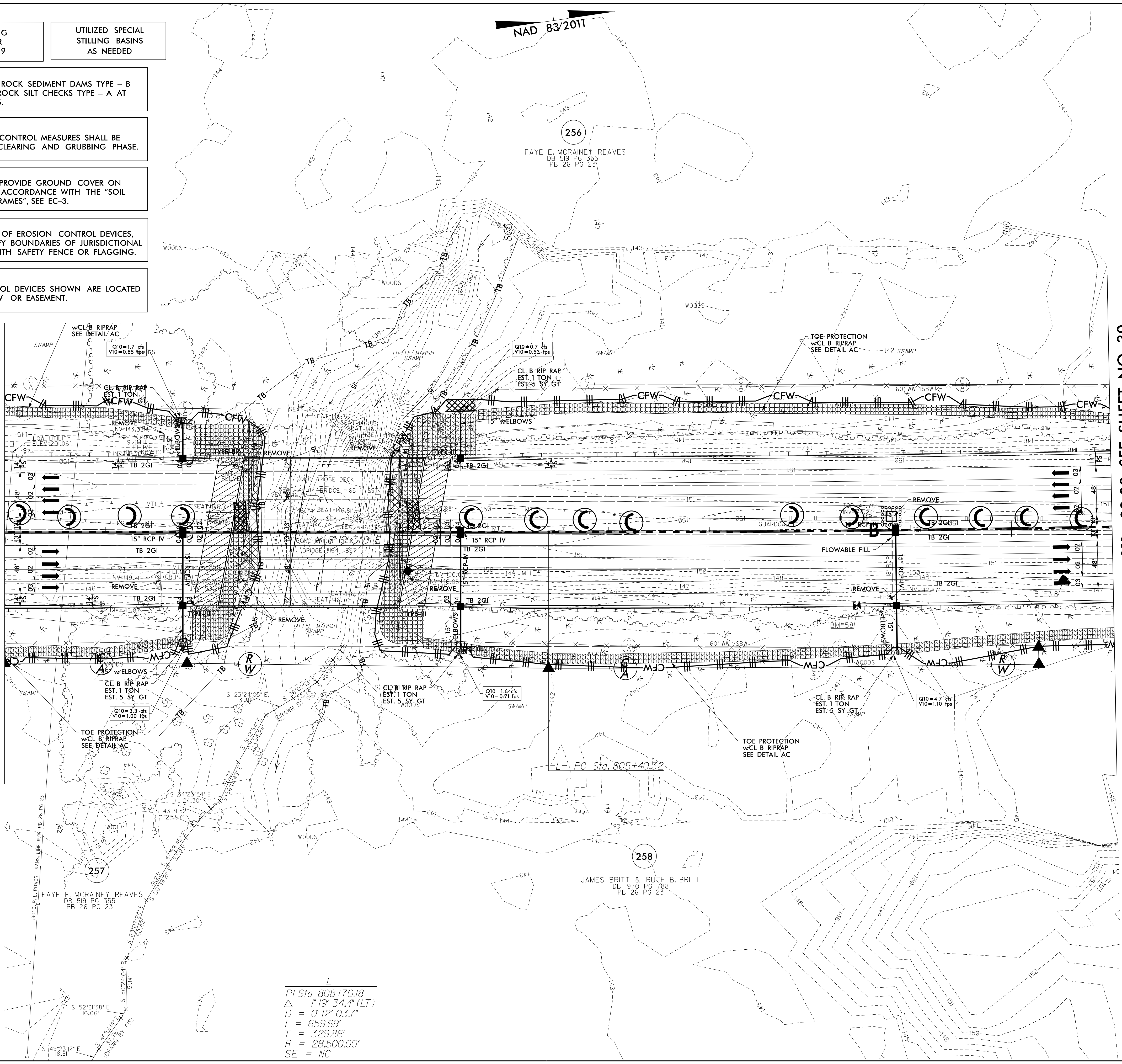
RW SHEET NO.  
ROADSIDE ENVIRONMENTAL PROJECT ENGINEER

LEVEL III CERTIFIED BY:  
MATTHEW HARVEY, PE  
CERTIFICATION NUMBER: 3487  
ISSUED: MARCH 15, 2022

Prepared in the  
Office of:  
**M M** MOTT  
MACDONALD  
PO Box 700  
Fuquay-Varina, NC 27526  
www.mottmac.com/america  
**M** METHERILL  
ENGINEERING  
1223 Jones Franklin Rd.  
Raleigh, N.C. 27606  
License No. 143777  
Bus: 919.851.8077  
Fax: 919.851.9107

MATCHLINE -L- STA. 800 + 00.00 SEE SHEET NO. 28

MATCHLINE -L- STA. 811 + 00.00 SEE SHEET NO. 30



-L-  
PI Sta 808+70.18  
 $\Delta = 1' 19" 34.4" (LT)$   
 $D = 0' 12" 03.7"$   
 $L = 659.69'$   
 $T = 329.86'$   
 $R = 28,500.00'$   
SE = NC

3/14/2022  
Erosion\_Control\15897B\_EC\_PSH\_29.CG.dgn  
Mott MacDonald