

5/14/2022

3/14/2022
Erosion_Control\15587B_EC_PSH_28-CG.dgn
Mott MacDonald

**CLEARING AND GRUBBING
EROSION CONTROL FOR
CONSTRUCTION SHEET 28**

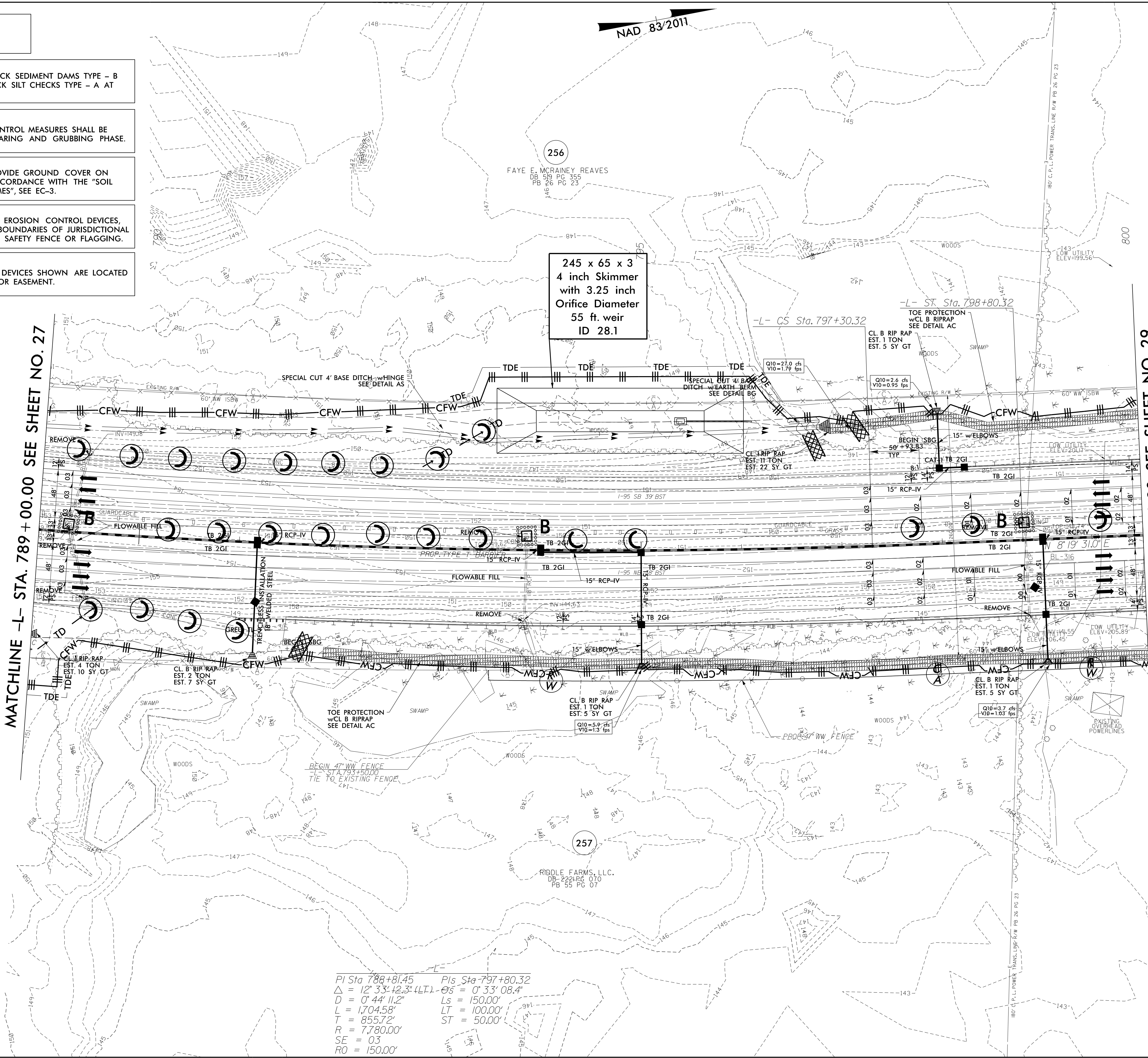
NOTE:
PLACE TEMPORARY ROCK SEDIMENT DAMS TYPE - B
AND TEMPORARY ROCK SILT CHECKS TYPE - A AT
DRAINAGE OUTLETS.

NOTE:
PERIMETER EROSION CONTROL MEASURES SHALL BE
INSTALLED DURING CLEARING AND GRUBBING PHASE.

NOTE:
CONTRACTOR SHALL PROVIDE GROUND COVER ON
EXPOSED SLOPES IN ACCORDANCE WITH THE "SOIL
STABILIZATION TIMEFRAMES", SEE EC-3.

NOTE:
PRIOR TO INSTALLATION OF EROSION CONTROL DEVICES,
CONTRACTOR SHALL VERIFY BOUNDARIES OF JURISDICTIONAL
AREAS AND DELINEATE WITH SAFETY FENCE OR FLAGGING.

NOTE:
ALL EROSION CONTROL DEVICES SHOWN ARE LOCATED
WITHIN EXISTING RW OR EASEMENT.



245 x 65 x 3
4 inch Skimmer
with 3.25 inch
Orifice Diameter
55 ft. weir
ID 28.1

| | |
|--|-------------------|
| PI Sta 788+81.45 | Pis Sta 797+80.32 |
| $\Delta = 12' 33" 42.3" (LT) - 0' 33" 08.4"$ | $Ls = 150.00'$ |
| $D = 0' 44" 11.2"$ | $LT = 100.00'$ |
| $L = 1704.58'$ | $ST = 50.00'$ |
| $R = 855.72'$ | |
| $T = 7780.00'$ | |
| $SE = 03$ | |
| $RO = 150.00'$ | |

| | |
|---|-----------------------------|
| PROJECT REFERENCE NO. <i>1-5897B</i> | SHEET NO. EC-29/CONST.28 |
| RW SHEET NO. | |
| ROADSIDE ENVIRONMENTAL PROJECT ENGINEER | |
| LEVEL III CERTIFIED BY: MATTHEW HARVEY, PE CERTIFICATION NUMBER: 3487 ISSUED: MARCH 15, 2022 | |

Prepared in the Office of:

M M
MOTT
MACDONALD

PO Box 700
Fuquay-Varina, NC 27526
www.mottmac.com/americas

ETHERILL
ENGINEERING

1223 Jones Franklin Rd.
Raleigh, N.C. 27606
License No. 143777
Bus: 919.851.8077
Fax: 919.851.9107

MATCHLINE -L- STA. 789 + 00.00 SEE SHEET NO. 27

MATCHLINE -L- STA. 800 + 00.00 SEE SHEET NO. 29