

5/14/2022

PROJECT REFERENCE NO. 1-5897B SHEET NO. EC-27/CONST.26

RW SHEET NO. ROADSIDE ENVIRONMENTAL PROJECT ENGINEER

LEVEL III CERTIFIED BY: MATTHEW HARVEY, PE CERTIFICATION NUMBER: 3487 ISSUED: MARCH 15, 2022

CLEARING AND GRUBBING EROSION CONTROL FOR CONSTRUCTION SHEET 26

NOTE: ALL EROSION CONTROL DEVICES SHOWN ARE LOCATED WITHIN EXISTING RW OR EASEMENT.

NOTE: PLACE TEMPORARY ROCK SEDIMENT DAMS TYPE - B AND TEMPORARY ROCK SILT CHECKS TYPE - A AT DRAINAGE OUTLETS.

NOTE: PERIMETER EROSION CONTROL MEASURES SHALL BE INSTALLED DURING CLEARING AND GRUBBING PHASE.

NOTE: CONTRACTOR SHALL PROVIDE GROUND COVER ON EXPOSED SLOPES IN ACCORDANCE WITH THE "SOIL STABILIZATION TIMEFRAMES", SEE EC-3.

NOTE: PRIOR TO INSTALLATION OF EROSION CONTROL DEVICES, CONTRACTOR SHALL VERIFY BOUNDARIES OF JURISDICTIONAL AREAS AND DELINEATE WITH SAFETY FENCE OR FLAGGING.

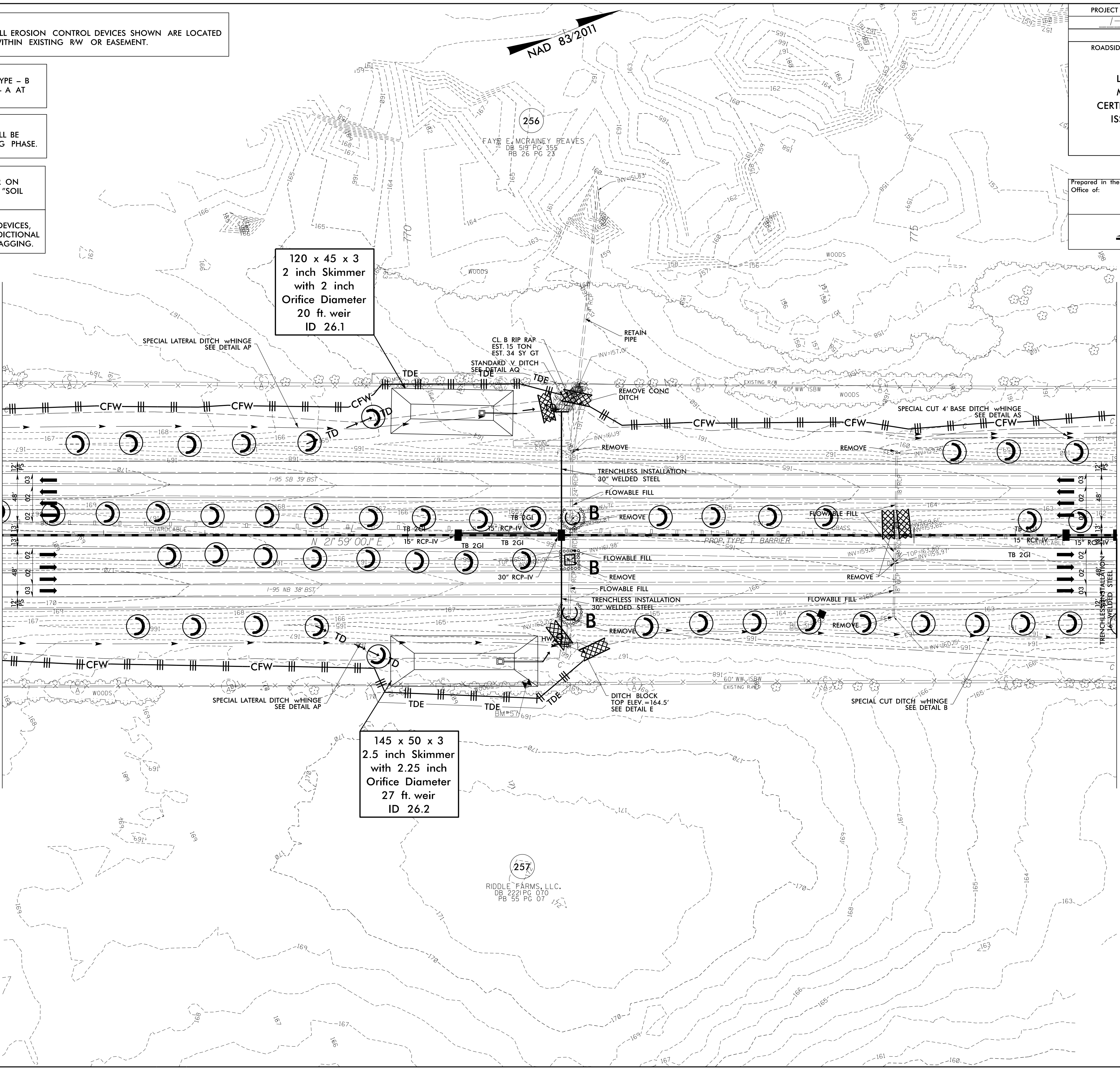
Prepared in the Office of:

**M M** MOTT MACDONALD  
 PO Box 700  
 Fuquay-Varina, NC 27526  
 www.mottmac.com/america

**ETHERILL ENGINEERING**  
 1223 Jones Franklin Rd.  
 Raleigh, N.C. 27606  
 License No. 1-43777  
 Bus: 919 851 8077  
 Fax: 919 851 9107

MATCHLINE -L- STA. 766 + 00.00 SEE SHEET NO. 25

MATCHLINE -L- STA. 777 + 00.00 SEE SHEET NO. 27



3/14/2022  
 \Erosion\_Control\15897B\_EC\_PSH\_26\_CG.dgn  
 Mott MacDonald