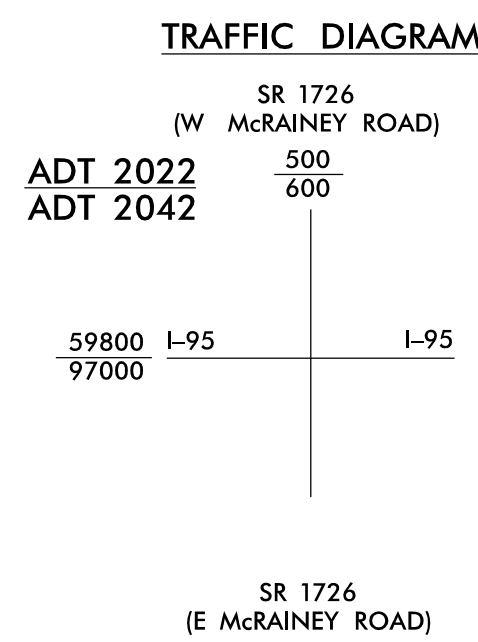


5/14/2022



CLEARING AND GRUBBING EROSION CONTROL FOR CONSTRUCTION SHEET 25

NOTE: ALL EROSION CONTROL DEVICES SHOWN ARE LOCATED WITHIN EXISTING RW OR EASEMENT.

NOTE: PLACE TEMPORARY ROCK SEDIMENT DAMS TYPE - B AND TEMPORARY ROCK SILT CHECKS TYPE - A AT DRAINAGE OUTLETS.

NOTE: PERIMETER EROSION CONTROL MEASURES SHALL BE INSTALLED DURING CLEARING AND GRUBBING PHASE.

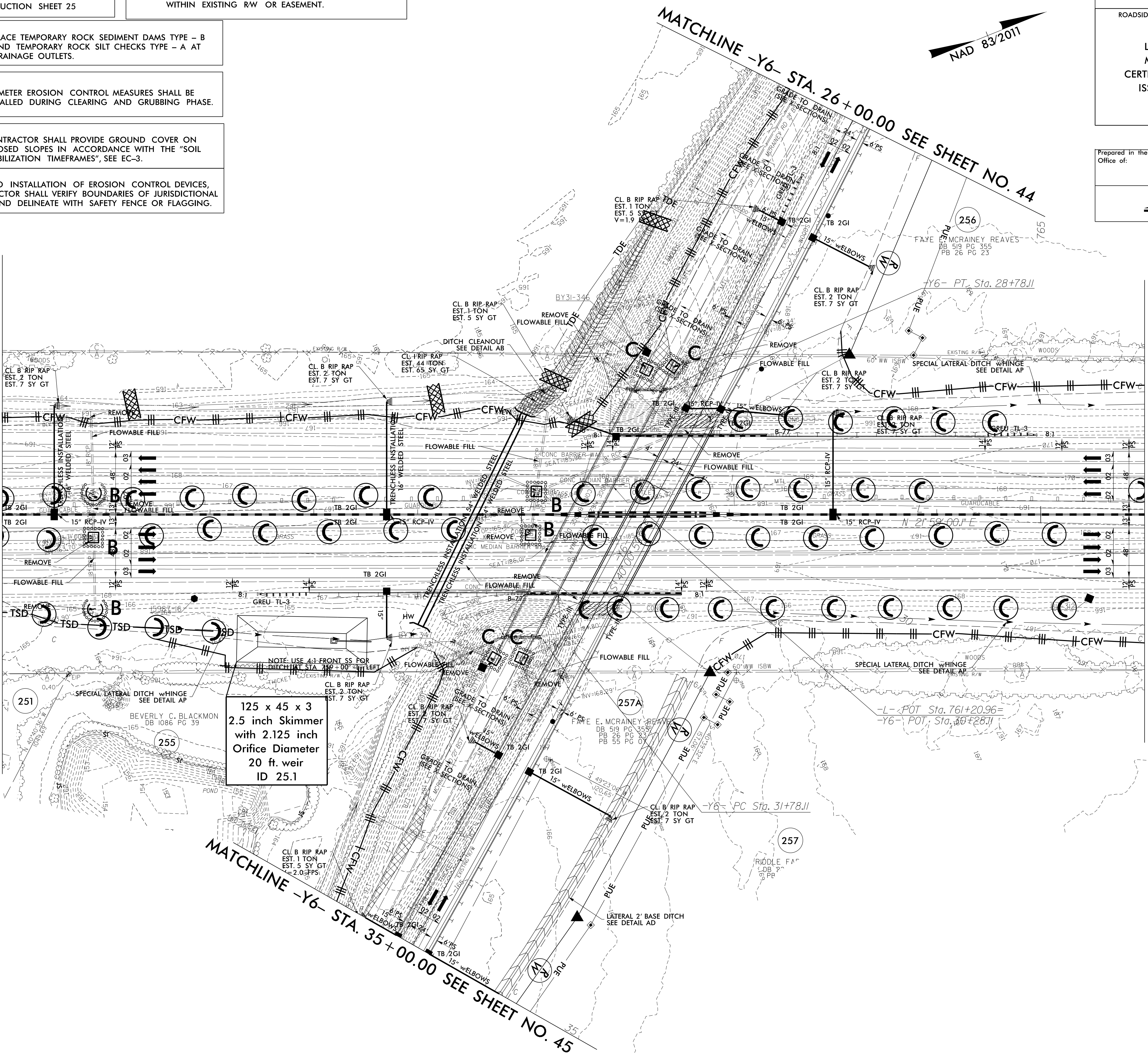
NOTE: CONTRACTOR SHALL PROVIDE GROUND COVER ON EXPOSED SLOPES IN ACCORDANCE WITH THE "SOIL STABILIZATION TIMEFRAMES", SEE EC-3.

NOTE: PRIOR TO INSTALLATION OF EROSION CONTROL DEVICES, CONTRACTOR SHALL VERIFY BOUNDARIES OF JURISDICTIONAL AREAS AND DELINEATE WITH SAFETY FENCE OR FLAGGING.

| | |
|---|--|
| PROJECT REFERENCE NO. | SHEET NO. |
| 1-5897B | EC-26/CONST.25 |
| RW SHEET NO. | |
| ROADSIDE ENVIRONMENTAL PROJECT ENGINEER | |
| LEVEL III CERTIFIED BY: MATTHEW HARVEY, PE CERTIFICATION NUMBER: 3487 ISSUED: MARCH 15, 2022 | |
| Prepared in the Office of: | MOTT MACDONALD PO Box 700 Fuquay-Varina, NC 27526 www.mottmac.com/america |
| | 1223 Jones Franklin Rd. Raleigh, N.C. 27606 License No. 1-4377 Bus: 919.851.8077 Fax: 919.851.9107 |

MATCHLINE -L- STA. 755 + 00.00 SEE SHEET NO. 24

MATCHLINE -L- STA. 766 + 00.00 SEE SHEET NO. 26



3/14/2022
Erosion_Control\15897B_EC_PSH_25-CG.dgn
Mott MacDonald