

5/14/2022

3/14/2022  
\\Erosion\_Control\15987B\_EC\_PSH\_24\_CG.dgn  
Matt MacDonald

**CLEARING AND GRUBBING  
EROSION CONTROL FOR  
CONSTRUCTION SHEET 24**

**NOTE:**  
PLACE TEMPORARY ROCK SEDIMENT DAMS TYPE - B  
AND TEMPORARY ROCK SILT CHECKS TYPE - A AT  
DRAINAGE OUTLETS.

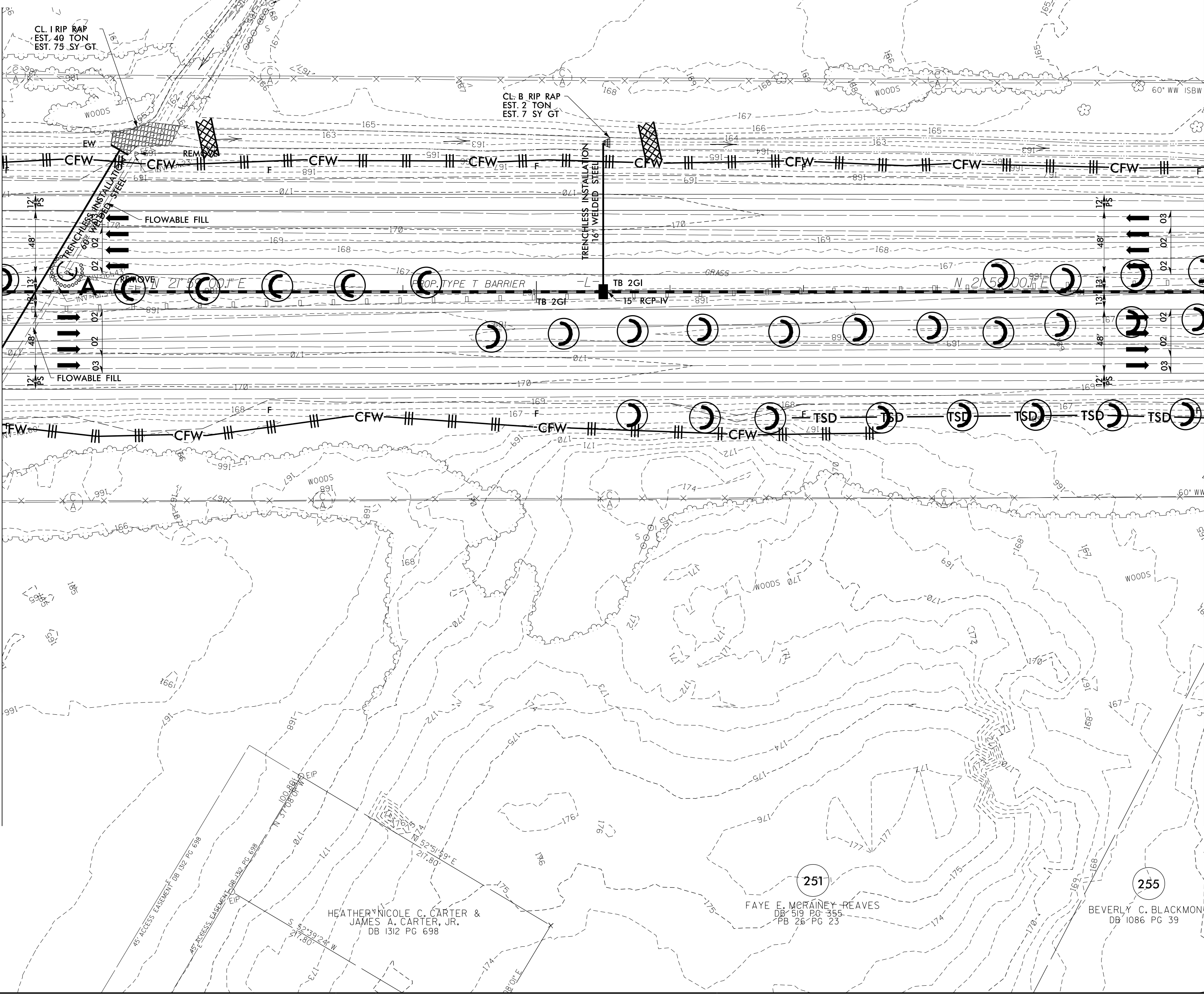
**NOTE:**  
PERIMETER EROSION CONTROL MEASURES SHALL BE  
INSTALLED DURING CLEARING AND GRUBBING PHASE.

**NOTE:**  
CONTRACTOR SHALL PROVIDE GROUND COVER ON  
EXPOSED SLOPES IN ACCORDANCE WITH THE "SOIL  
STABILIZATION TIMEFRAMES", SEE EC-3.

**NOTE:**  
PRIOR TO INSTALLATION OF EROSION CONTROL DEVICES,  
CONTRACTOR SHALL VERIFY BOUNDARIES OF JURISDICTIONAL  
AREAS AND DELINEATE WITH SAFETY FENCE OR FLAGGING.

**NOTE:**  
ALL EROSION CONTROL DEVICES SHOWN ARE LOCATED  
WITHIN EXISTING RW OR EASEMENT.

MATCHLINE -L- STA. 746 + 00.00 SEE SHEET NO. 23



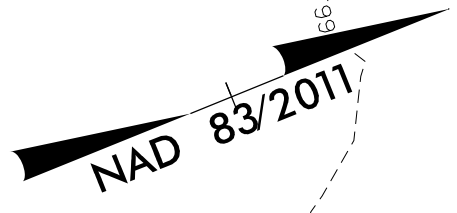
MATCHLINE -L- STA. 755 + 00.00 SEE SHEET NO. 25

PROJECT REFERENCE NO.	SHEET NO.
1-5987B	EC-25/CONST.24
RW SHEET NO.	
ROADSIDE ENVIRONMENTAL PROJECT ENGINEER	
LEVEL III CERTIFIED BY: MATTHEW HARVEY, PE CERTIFICATION NUMBER: 3487 ISSUED: MARCH 15, 2022	

**ETHERILL  
ENGINEERING**

1223 Jones Franklin Rd.  
Raleigh, N.C. 27606  
License No. F-0377  
Bus: 919 851 8077  
Fax: 919 851 8107

TRANSPORTATION PLANNING/DESIGN - BRIDGE/STRUCTURE DESIGN  
CIVIL/SITE DESIGN - GIS/GPS - CONSTRUCTION OBSERVATION



FAYE E. MCRAINEY REAVES  
DB 519 PG 355  
FB 26 PG 23

252

HEATHER NICOLE C. CARTER &  
JAMES A. CARTER, JR.  
DB 1312 PG 698

251

FAYE E. MCRAINEY REAVES  
DB 519 PG 355  
FB 26 PG 23

255

BEVERLY C. BLACKMON  
DB 1086 PG 39