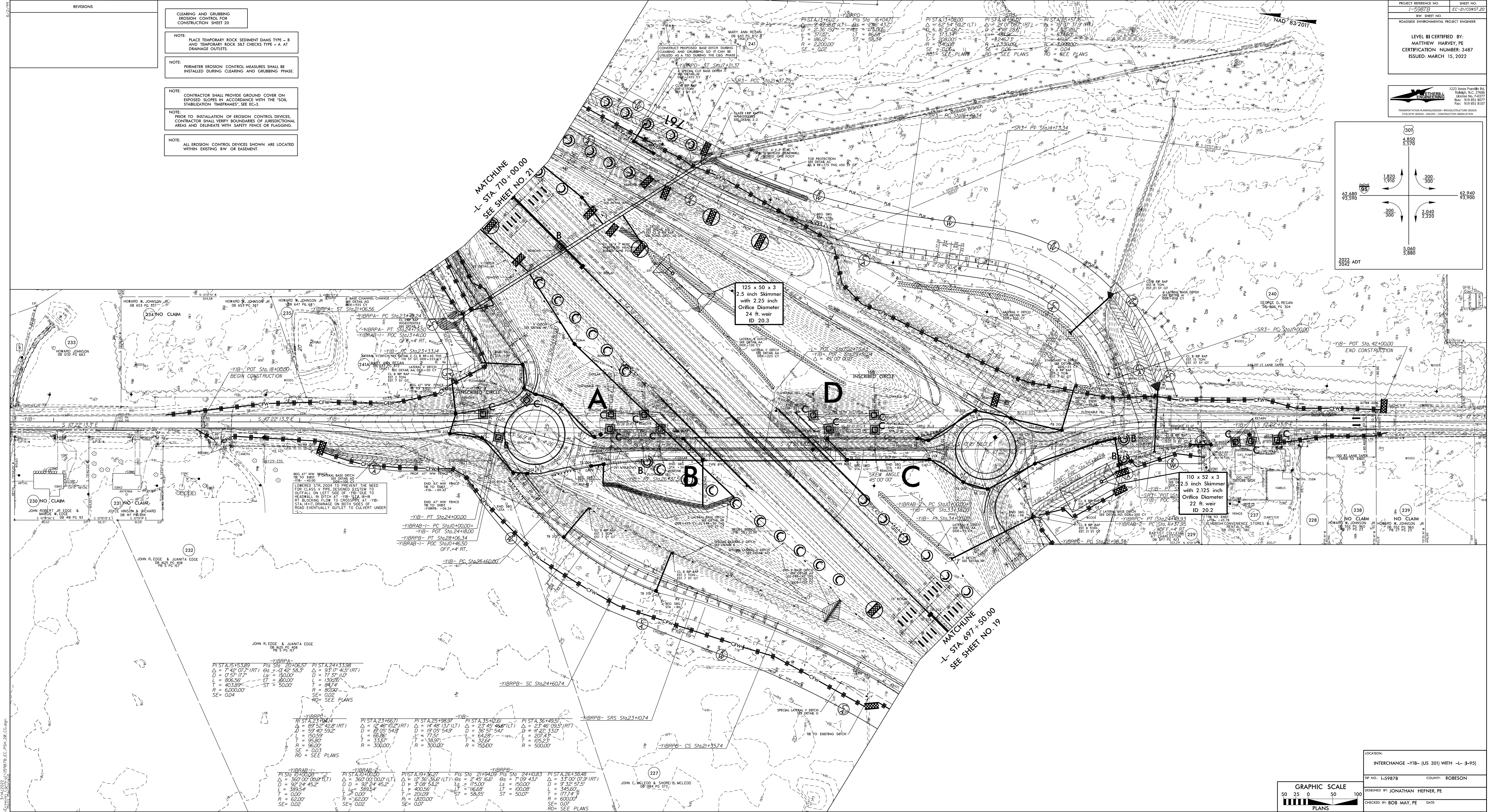
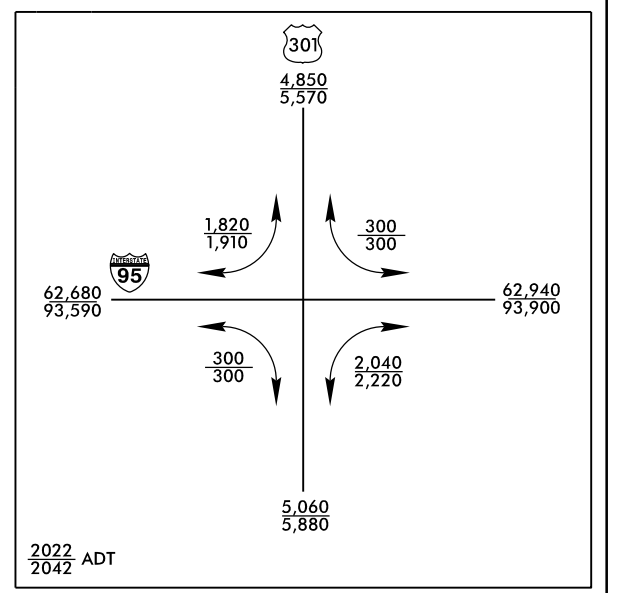


REVISIONS

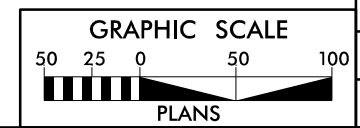
- CLEARING AND GRUBBING EROSION CONTROL FOR CONSTRUCTION SHEET 20
- NOTE: PLACE TEMPORARY ROCK SEDIMENT DAMS TYPE - B AND TEMPORARY ROCK SILT CHECKS TYPE - A AT DRAINAGE OUTLETS.
- NOTE: PERIMETER EROSION CONTROL MEASURES SHALL BE INSTALLED DURING CLEARING AND GRUBBING PHASE.
- NOTE: CONTRACTOR SHALL PROVIDE GROUND COVER ON EXPOSED SLOPES IN ACCORDANCE WITH THE "SOIL STABILIZATION TIMBERFRAMES", SEE EC-3.
- NOTE: PRIOR TO INSTALLATION OF EROSION CONTROL DEVICES, CONTRACTOR SHALL VERIFY BOUNDARIES OF JURISDICTIONAL AREAS AND DELINEATE WITH SAFETY FENCE OR FLAGGING.
- NOTE: ALL EROSION CONTROL DEVICES SHOWN ARE LOCATED WITHIN EXISTING RW OR EASEMENT.

PROJECT REFERENCE NO. EC-20/COW/20
 SHEET NO. 1-5987B
 ROADSIDE ENVIRONMENTAL PROJECT ENGINEER
 LEVEL III CERTIFIED BY: MATTHEW HARVEY, PE
 CERTIFICATION NUMBER: 3487
 ISSUED: MARCH 15, 2022

2223 JAMES FINNIN BLVD.
 RALEIGH, NC 27606
 PHONE: 919.421.2222
 FAX: 919.421.2222
 TRANSPORTATION PLANNING/DESIGN + GEOSTRUCTURAL DESIGN
 CIVIL/ENVIRONMENTAL/GEOTECHNICAL ENGINEERING



YIBRA-1	YIBRA-2	YIBRA-3	YIBRA-4	YIBRA-5
PI STA 15+53.89	PI STA 20+06.57	PI STA 24+33.98	PI STA 25+198.97	PI STA 35+02.61
Δ = 7° 48' 07" (RT)	Δ = 4° 42' 56.3"	Δ = 5° 17' 41.9" (RT)	Δ = 12° 48' 13" (LT)	Δ = 14° 48' 13" (LT)
D = 77' 17"	L = 180.00'	D = 77' 17"	D = 37' 45' 46" (LT)	D = 37' 45' 46" (LT)
L = 806.56'	LT = 400.00'	L = 150.59'	L = 37' 45' 46"	L = 37' 45' 46"
T = 403.89'	ST = 500.00'	T = 96.80'	T = 32.69'	T = 32.69'
R = 6000.00'	R = 3000.00'	R = 3000.00'	R = 3000.00'	R = 3000.00'
SE = 0.04	SE = 0.02	SE = 0.02	SE = 0.02	SE = 0.02
RO = SEE PLANS	RO = SEE PLANS	RO = SEE PLANS	RO = SEE PLANS	RO = SEE PLANS



LOCATION: INTERCHANGE YIB- (US 301) WITH I-85
 TYP NO. I-5987B COUNTY: ROBESON
 DESIGNED BY: JONATHAN HEFFNER, PE
 CHECKED BY: BOB MAY, PE DATE: