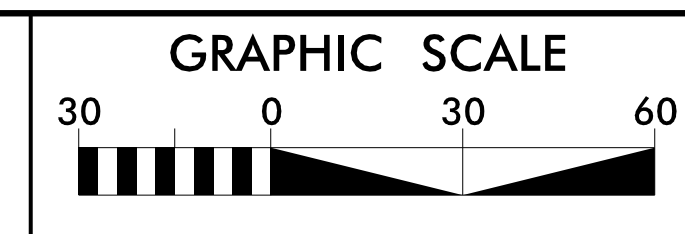
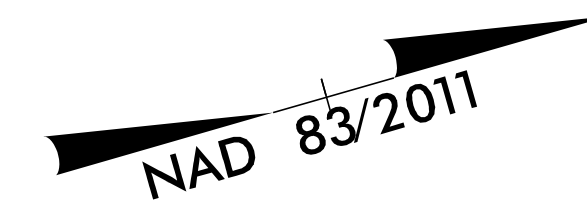
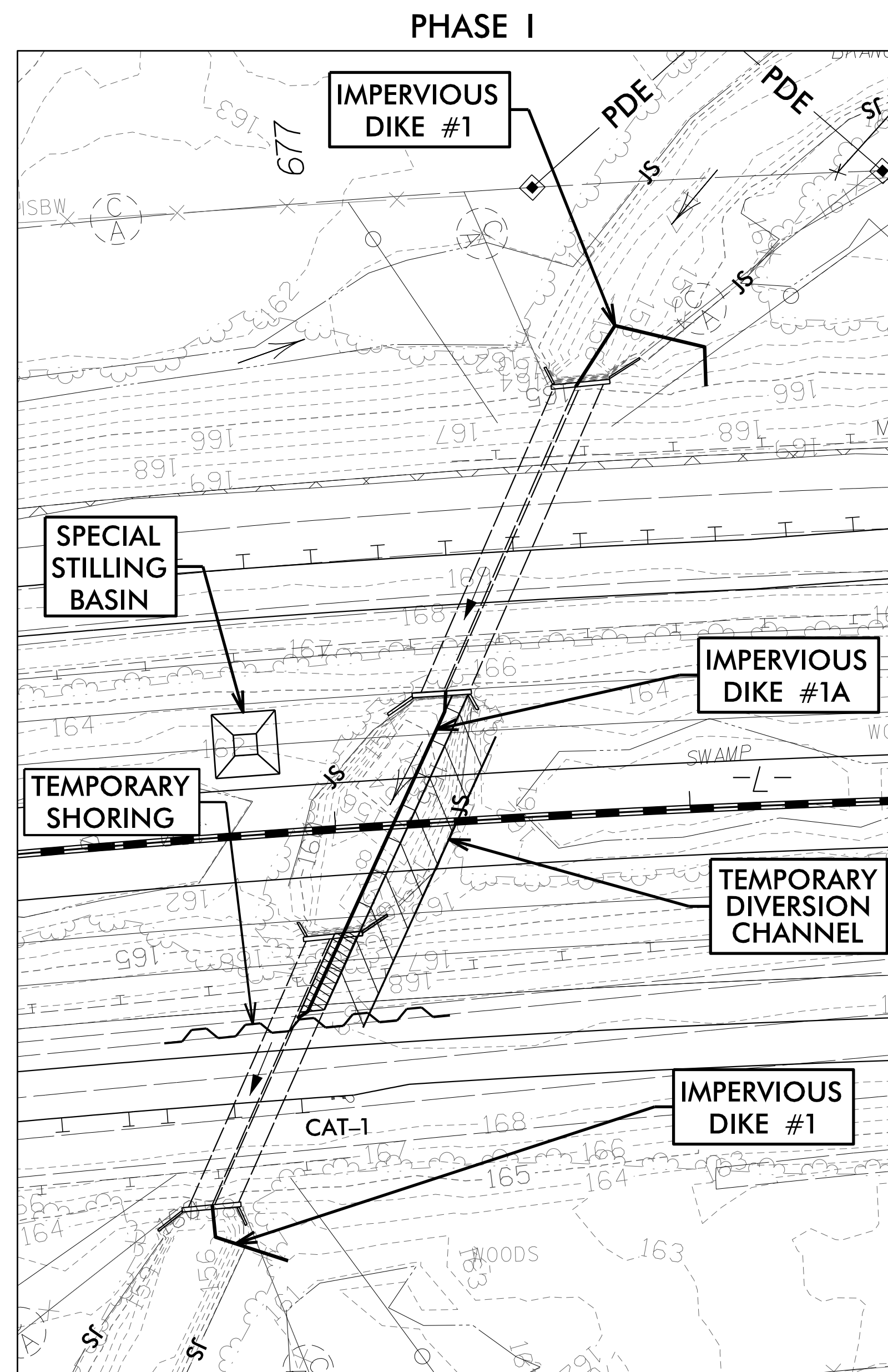


CONSTRUCTION SEQUENCE STA. 677+13.2 -L-

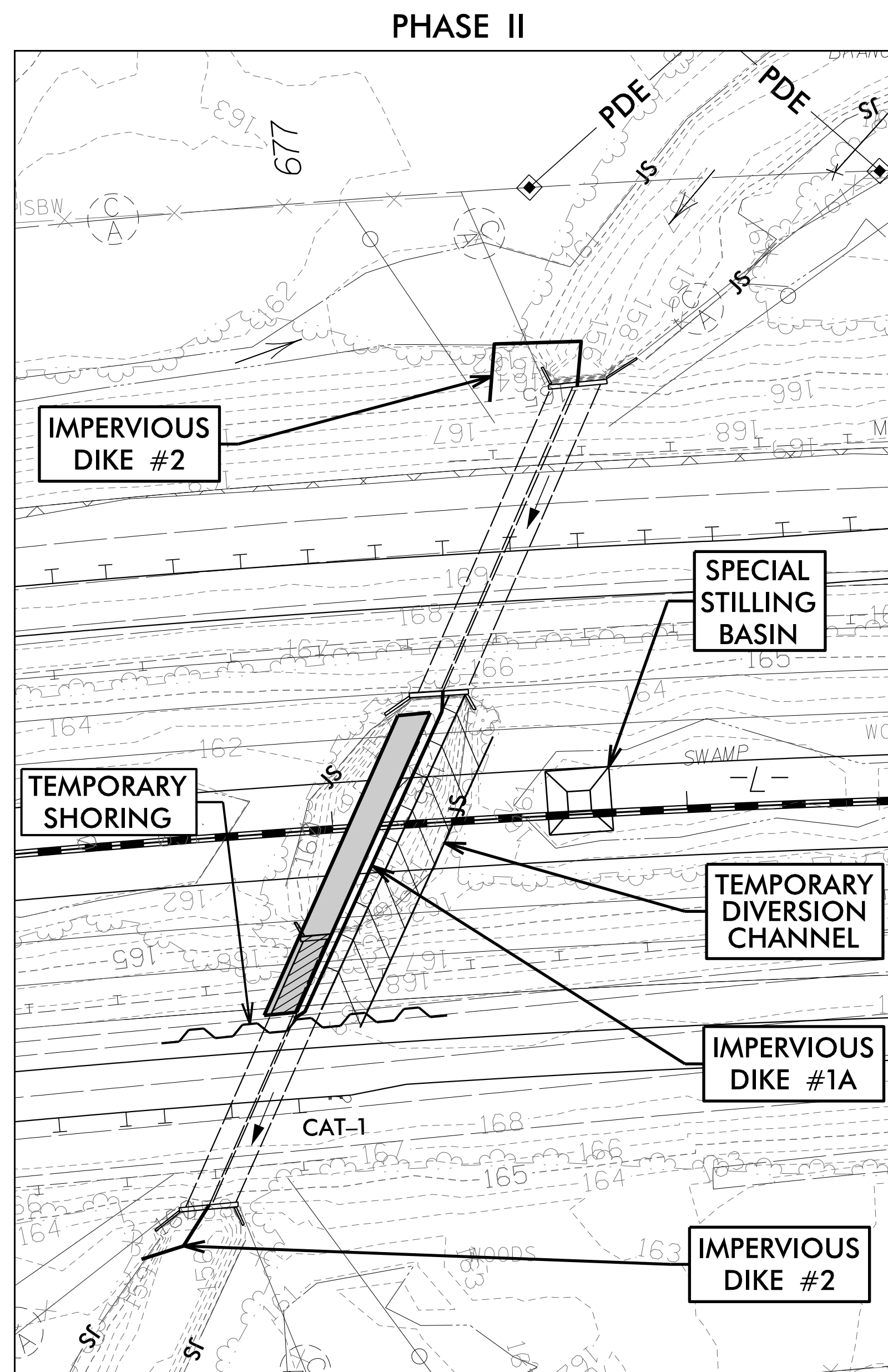


PROJECT REFERENCE NO.	SHEET NO.
1-5987B	EC-19A/CONST.18
RW SHEET NO.	
ROADSIDE ENVIRONMENTAL PROJECT ENGINEER	
LEVEL III CERTIFIED BY: ELENI M. RIGGS, PE CERTIFICATION NUMBER: 3056 ISSUED: MARCH 15, 2022	

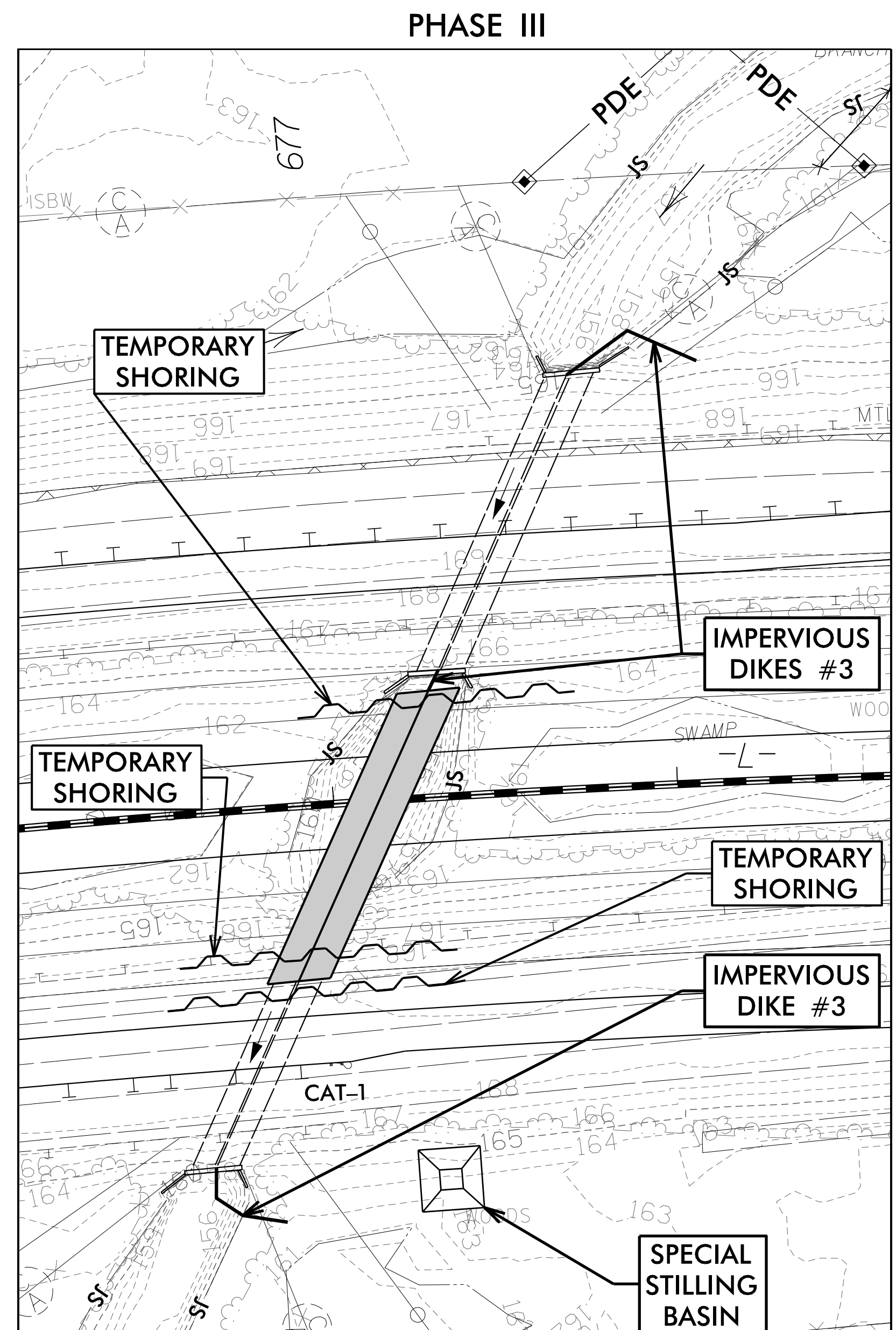
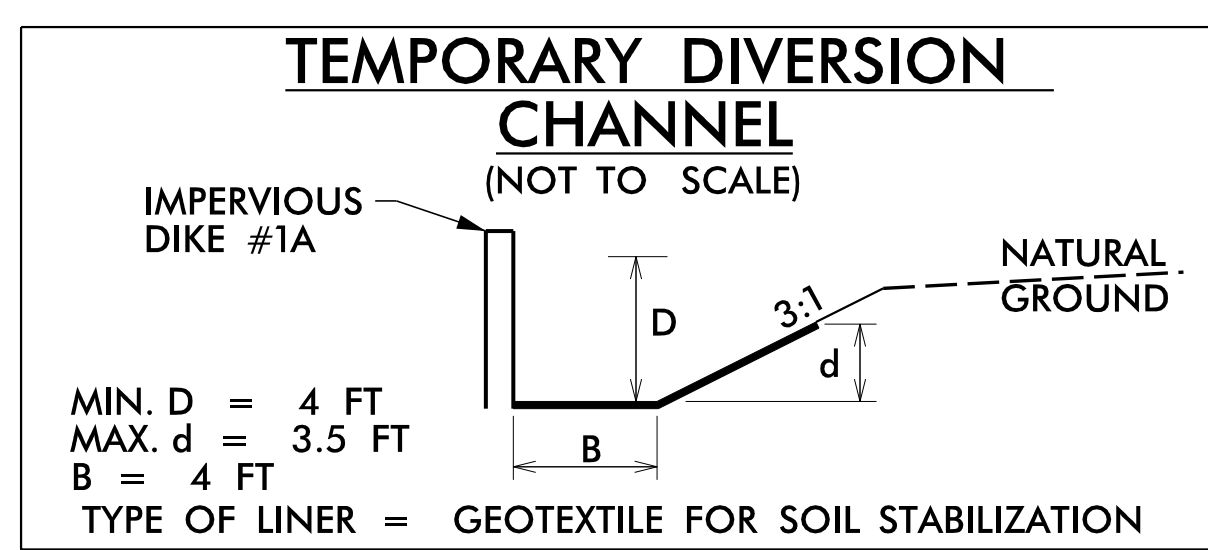
Prepared in the Office of: **M** MOTT MACDONALD
 7621 Purfoy Road, Suite 115
 Fuquay-Varina, NC 27526
 (919) 552-2253
 www.mottmac.com
 NC License No. F-0669



- 1.) INSTALL ALL TEMPORARY SEDIMENT CONTROL DEVICES NECESSARY FOR CULVERT CONSTRUCTION.
- 2.) SHIFT TRAFFIC ONTO THE REPLACED OUTSIDE NB I-95 SHOULDER.
- 3.) INSTALL TEMPORARY SHORING ACCORDING TO TMP STAGING PLANS.
- 4.) INSTALL SPECIAL STILLING BASIN BEHIND MEDIAN BARRIER. PUMP ALL EFFLUENT INTO SPECIAL STILLING BASIN, AS NECESSARY.
- 5.) INSTALL IMPERVIOUS DIKES #1 AND #1A TO DIRECT THE FLOW INTO THE SOUTH BARREL OF THE EXISTING RCBC UNDER NB I-95.
- 6.) REMOVE THE NORTH BARREL OF THE EXISTING RCBC, INCLUDING WINGWALL, UP TO 4.7' FROM TEMPORARY SHORING, AS DETAILED IN THE TMP STAGING PLANS.
- 7.) EXTEND IMPERVIOUS DIKE #1A AND CONSTRUCT TEMPORARY DIVERSION CHANNEL, PER DETAIL.
- 8.) REMOVE IMPERVIOUS DIKES #1, LEAVING IMPERVIOUS DIKE #1A IN PLACE.



- 1.) ADJUST LOCATION OF SPECIAL STILLING BASIN.
- 2.) INSTALL IMPERVIOUS DIKES #2 TO DIRECT THE FLOW INTO THE NORTH BARREL OF THE EXISTING RCBC.
- 3.) REMOVE THE SOUTH BARREL OF THE EXISTING RCBC UP TO 4.7' FROM TEMPORARY SHORING, SIMILAR TO THE NORTH BARREL IN PHASE I.
- 4.) WITH FLOW DIRECTED IN THE NORTH BARREL, CONSTRUCT APPROX. 80' OF THE SOUTH BARREL OF PROPOSED 8' X 8' RCBC, AS DETAILED IN THE TMP STAGING PLANS.
- 5.) REMOVE IMPERVIOUS DIKES #1A AND #2.



- 1.) INSTALL IMPERVIOUS DIKES #3 ON THE UPSTREAM AND DOWNSTREAM ENDS AND A SMALL PIECE IN THE MEDIAN TO DIRECT FLOW BACK INTO THE SOUTH BARREL.
- 2.) INSTALL SPECIAL STILLING BASIN ON DOWNSTREAM END. PUMP ALL EFFLUENT INTO SPECIAL STILLING BASIN, AS NECESSARY.
- 3.) CONSTRUCT APPROX. 80' OF THE NORTH BARREL OF THE PROPOSED 8' X 8' RCBC, SIMILAR TO SOUTH BARREL IN PHASE II.
- 4.) INSTALL TEMPORARY SHORING ACCORDING TO TMP STAGING PLANS.
- 5.) CONSTRUCT MEDIAN ROADWAY BETWEEN THE TEMPORARY SHORING, AS DETAILED IN THE TMP STAGING PLANS.

5/14/2022 3:14/2022 R:\Eco\c1\5987b_EC_psh19A_cg.dgn Mott MacDonald