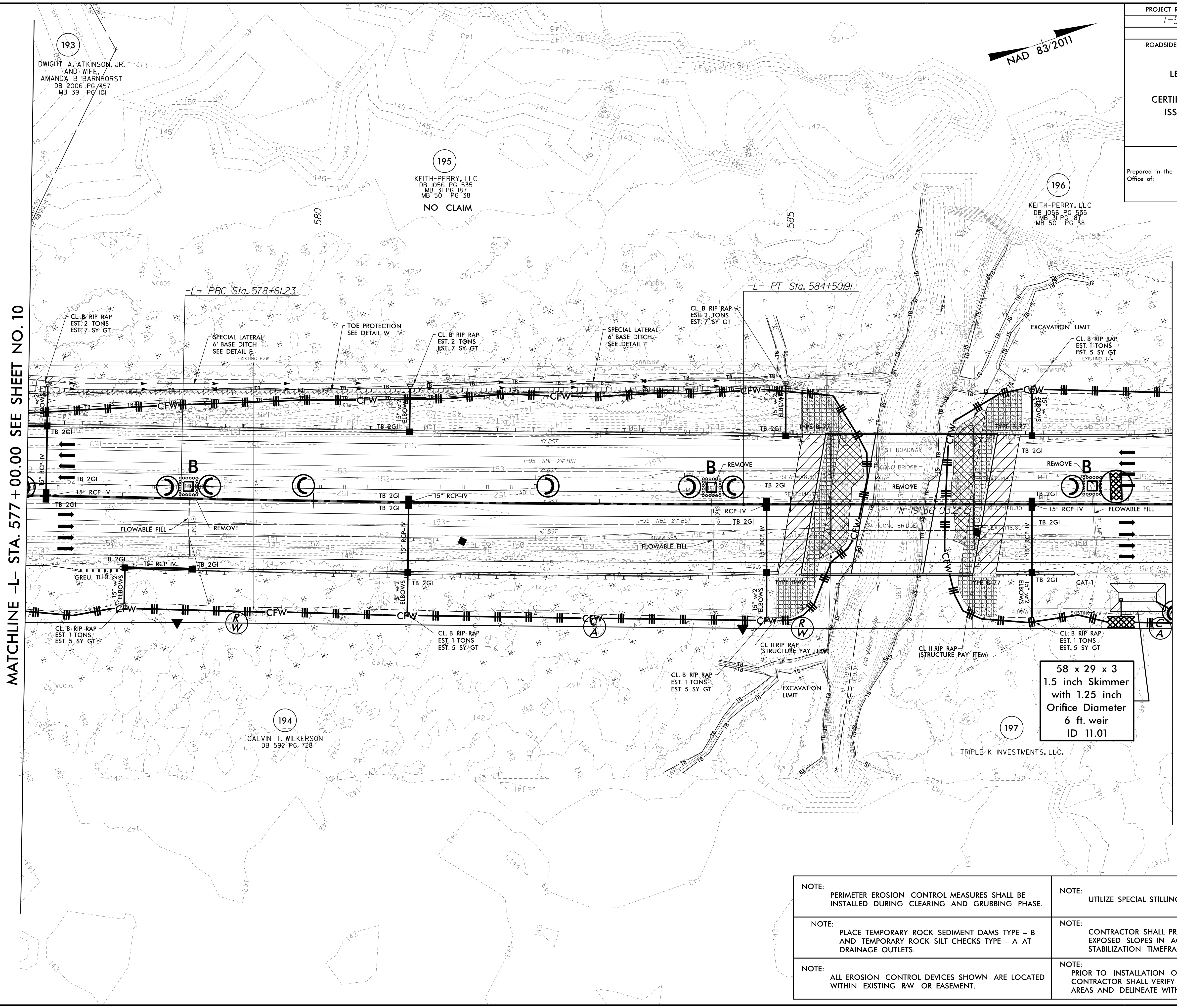
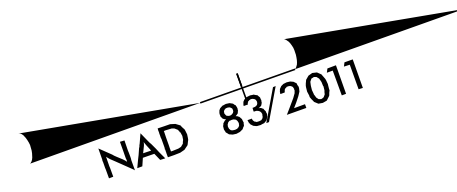


LEVEL III CERTIFIED BY:
 ELENI M. RIGGS, PE
 CERTIFICATION NUMBER: 3056
 ISSUED: MARCH 15, 2022

Prepared in the Office of:
M MOTT MACDONALD
 7621 Purfoy Rd, Suite 115
 Fuquay-Varina, NC 27526
 www.mottmac.com/americas

CLEARING AND GRUBBING
 EROSION CONTROL FOR
 CONSTRUCTION SHEET 11



MATCHLINE -L- STA. 577 + 00.00 SEE SHEET NO. 10

MATCHLINE -L- STA. 589 + 00.00 SEE SHEET NO. 12

58 x 29 x 3
 1.5 inch Skimmer
 with 1.25 inch
 Orifice Diameter
 6 ft. weir
 ID 11.01

NOTE: PERIMETER EROSION CONTROL MEASURES SHALL BE INSTALLED DURING CLEARING AND GRUBBING PHASE.	NOTE: UTILIZE SPECIAL STILLING BASINS AS NEEDED.
NOTE: PLACE TEMPORARY ROCK SEDIMENT DAMS TYPE - B AND TEMPORARY ROCK SILT CHECKS TYPE - A AT DRAINAGE OUTLETS.	NOTE: CONTRACTOR SHALL PROVIDE GROUND COVER ON EXPOSED SLOPES IN ACCORDANCE WITH THE "SOIL STABILIZATION TIMEFRAMES", SEE EC-3.
NOTE: ALL EROSION CONTROL DEVICES SHOWN ARE LOCATED WITHIN EXISTING RW OR EASEMENT.	NOTE: PRIOR TO INSTALLATION OF EROSION CONTROL DEVICES, CONTRACTOR SHALL VERIFY BOUNDARIES OF JURISDICTIONAL AREAS AND DELINEATE WITH SAFETY FENCE OR FLAGGING.