

5/14/2022

NOTE: PLACE TEMPORARY ROCK SEDIMENT DAMS TYPE - B AND TEMPORARY ROCK SILT CHECKS TYPE - A AT DRAINAGE OUTLETS.

NOTE: ALL EROSION CONTROL DEVICES SHOWN ARE LOCATED WITHIN EXISTING RW OR EASEMENT.

NOTE: PERIMETER EROSION CONTROL MEASURES SHALL BE INSTALLED DURING CLEARING AND GRUBBING PHASE.

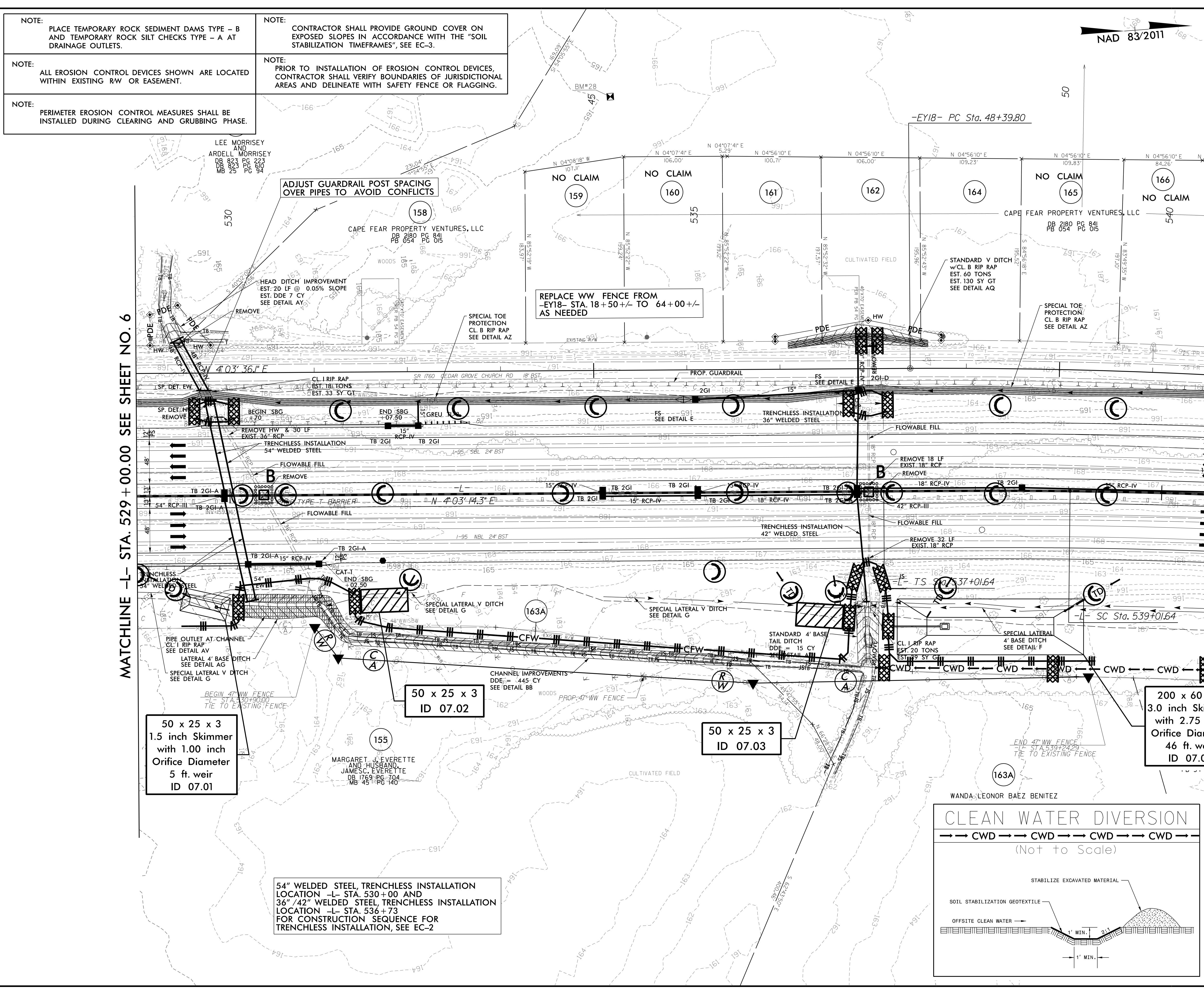
NOTE: CONTRACTOR SHALL PROVIDE GROUND COVER ON EXPOSED SLOPES IN ACCORDANCE WITH THE "SOIL STABILIZATION TIMEFRAMES", SEE EC-3.

NOTE: PRIOR TO INSTALLATION OF EROSION CONTROL DEVICES, CONTRACTOR SHALL VERIFY BOUNDARIES OF JURISDICTIONAL AREAS AND DELINEATE WITH SAFETY FENCE OR FLAGGING.

PROJECT REFERENCE NO. 1-5987B	SHEET NO. EC-7/CONST.7
RW SHEET NO.	
ROADSIDE ENVIRONMENTAL PROJECT ENGINEER	
LEVEL III CERTIFIED BY: ELENI M. RIGGS, PE CERTIFICATION NUMBER: 3056 ISSUED: MARCH 15, 2022	
Prepared in the Office of:	<b>M</b> MOTT MACDONALD 7621 Purfoy Rd, Suite 115 Fuquay-Varina, NC 27526 www.mottmac.com/americas

MATCHLINE -L- STA. 529 + 00.00 SEE SHEET NO. 6

MATCHLINE -L- STA. 541 + 00.00 SEE SHEET NO. 8



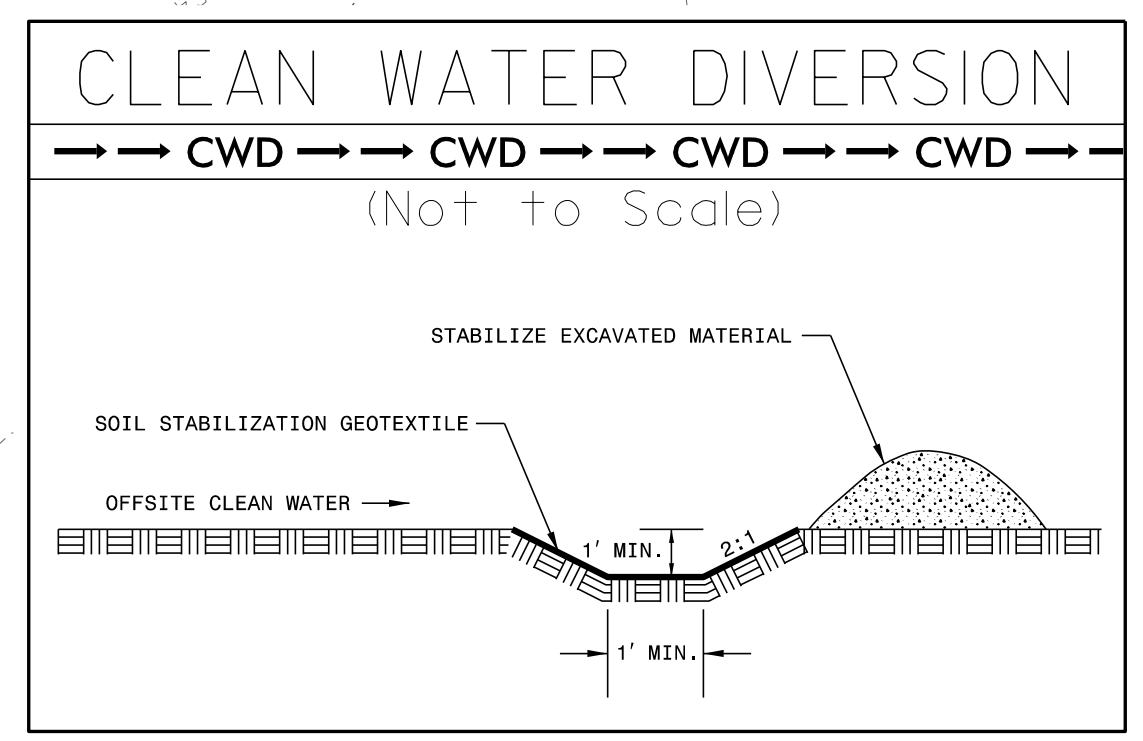
50 x 25 x 3  
1.5 inch Skimmer  
with 1.00 inch  
Orifice Diameter  
5 ft. weir  
ID 07.01

50 x 25 x 3  
ID 07.02

50 x 25 x 3  
ID 07.03

200 x 60 x 3  
3.0 inch Skimmer  
with 2.75 inch  
Orifice Diameter  
46 ft. weir  
ID 07.04

54" WELDED STEEL, TRENCHLESS INSTALLATION  
LOCATION -L- STA. 530+00 AND  
36"/42" WELDED STEEL, TRENCHLESS INSTALLATION  
LOCATION -L- STA. 536+73  
FOR CONSTRUCTION SEQUENCE FOR  
TRENCHLESS INSTALLATION, SEE EC-2



R:\Eco\15987b-EC-psh07-c9.dgn