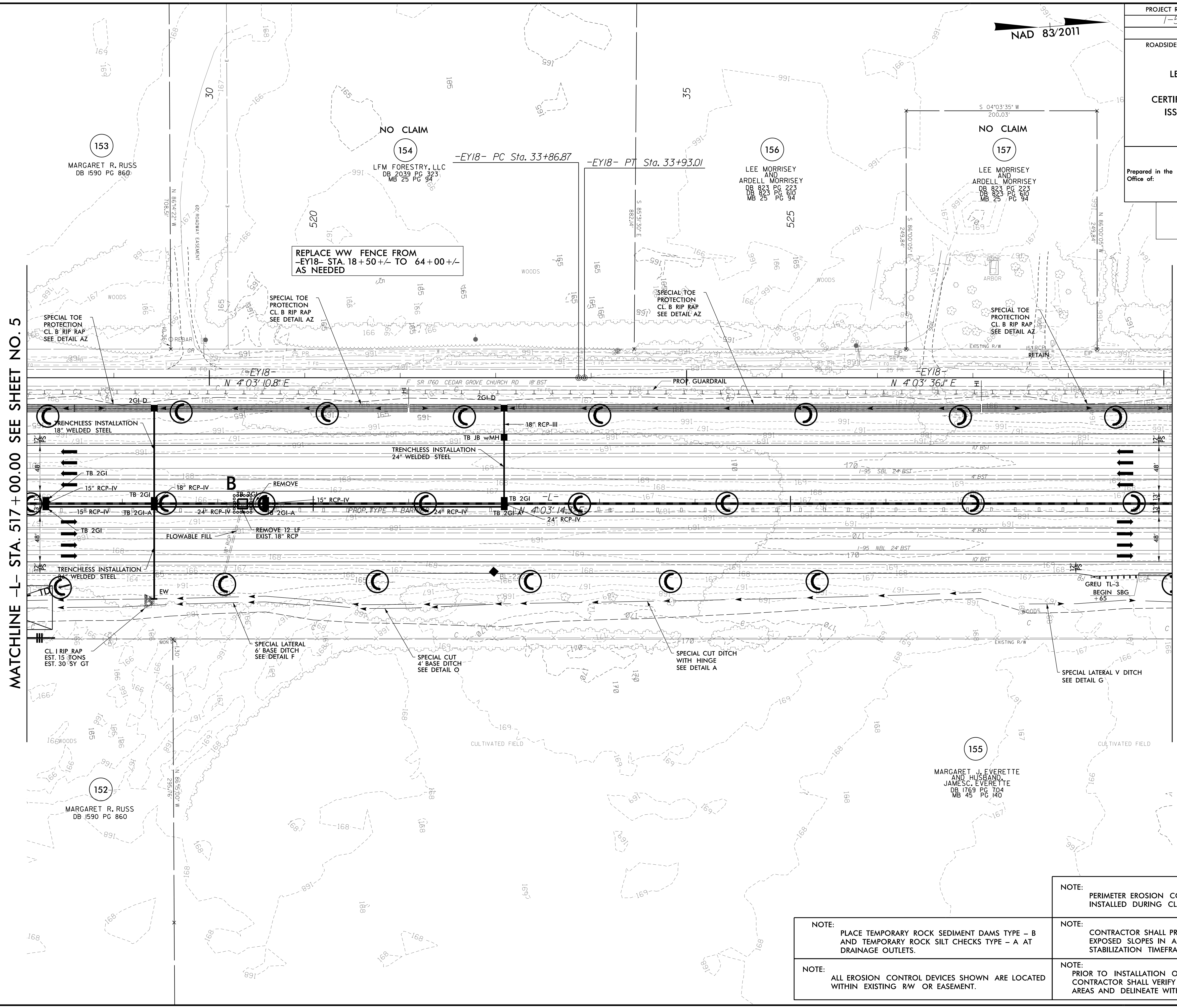


5/14/22

|   |  |
|---|--|
| PROJECT REFERENCE NO.<br>1-5987B  | SHEET NO.<br>EC-6/CONST.6  |
| RW SHEET NO.<br>ROADSIDE ENVIRONMENTAL PROJECT ENGINEER   |  |
| LEVEL III CERTIFIED BY:<br>ELENI M. RIGGS, PE<br>CERTIFICATION NUMBER: 3056<br>ISSUED: MARCH 15, 2022 |  |
| Prepared in the Office of:  | <b>M</b><br>MOTT MACDONALD<br>7621 Purfoy Rd, Suite 115<br>Fuquay-Varina, NC 27526<br>www.mottmac.com/americas |

CLEARING AND GRUBBING EROSION CONTROL FOR CONSTRUCTION SHEET 6



MATCHLINE -L- STA. 517 + 00.00 SEE SHEET NO. 5

MATCHLINE -L- STA. 529 + 00.00 SEE SHEET NO. 7

REPLACE WW FENCE FROM -EY18- STA. 18+50+/- TO 64+00+/- AS NEEDED

- NOTE: PERIMETER EROSION CONTROL MEASURES SHALL BE INSTALLED DURING CLEARING AND GRUBBING PHASE.
- NOTE: CONTRACTOR SHALL PROVIDE GROUND COVER ON EXPOSED SLOPES IN ACCORDANCE WITH THE "SOIL STABILIZATION TIMEFRAMES", SEE EC-3.
- NOTE: ALL EROSION CONTROL DEVICES SHOWN ARE LOCATED WITHIN EXISTING RW OR EASEMENT.
- NOTE: PRIOR TO INSTALLATION OF EROSION CONTROL DEVICES, CONTRACTOR SHALL VERIFY BOUNDARIES OF JURISDICTIONAL AREAS AND DELINEATE WITH SAFETY FENCE OR FLAGGING.

R:\E-cad\1\5987b-EC-psh06.cgs.dgn 3/14/2022 Mott MacDonald