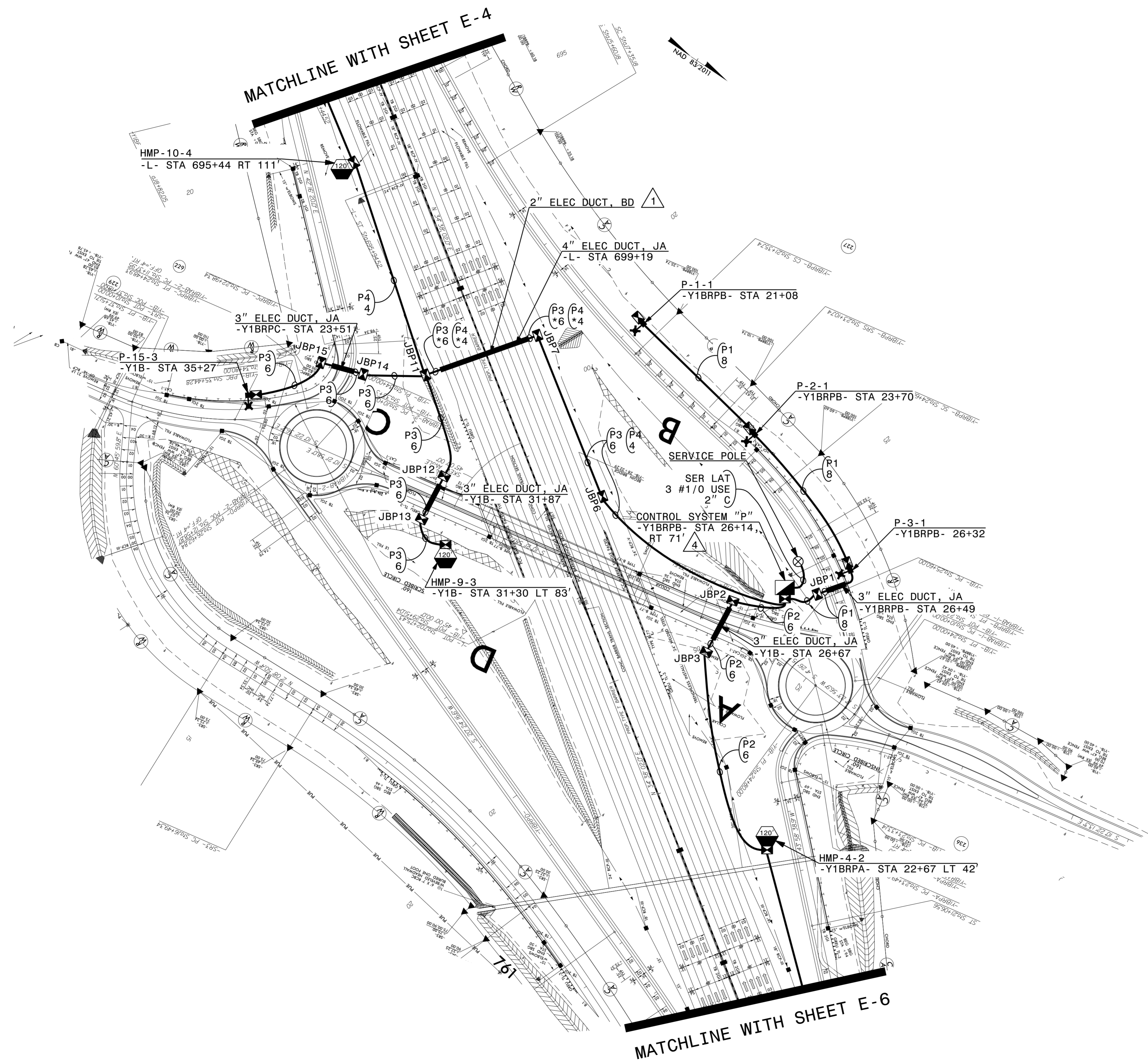


**DOCUMENT NOT CONSIDERED FINAL  
UNLESS ALL SIGNATURES COMPLETED**

USE FOR LIGHTING CONSTRUCTION ONLY



LOAD SCHEDULE  
CS LOCATION: -Y1BRPB- STA 26+14, RT 71  
CONTROL SYSTEM "P"

CIRCUIT ID	1Ø, 3W, 240/480 VAC		120' HIGH MAST W/ 8 560W MAX. LED LUMINAIRES	AMPS @ 480V	KW LOAD	BREAKER SIZE (AMPS)
	SINGLE ARM 1 @ 285W MAX. LED	TWIN ARM 2 @ 285W MAX. LED				
P1	P-1-1, P-2-1 P-3-1	--	--	1.8	0.9	50
P2	--	P-5-2, P-6-2 P-7-2, P-8-2	HMP-4-2	14.1	6.8	50
P3	P-15-3	--	HMP-9-3	9.9	4.8	50
P4	--	P-11-4, P-12-4 P-13-4, P-14-4	HMP-10-4	14.1	6.8	50
--	--	--	--	--	--	--
SPARE	--	--	--	--	--	50
TOTAL	4	8	3	39.9	19.3	

SEE SHEET "E-1" FOR LEGEND & △ NOTES

2			
1			
Rev.	Date	Description	Approved
<b>NORTH CAROLINA DEPARTMENT OF TRANSPORTATION</b> ROADWAY DESIGN LIGHTING/ELECTRICAL SECTION  <b>LIGHTING LAYOUT</b>  I-95/US 301 INTERCHANGE (EXIT 33)  ROBESON COUNTY			
Drawn By:	SAM	Approved By:	RGH
Dwg No.:			

28-MAR-2022 15:01 P:\Lighting Design\I-5987B CS - N & P\I5987B.LE\_PSH\_E-5.dgn