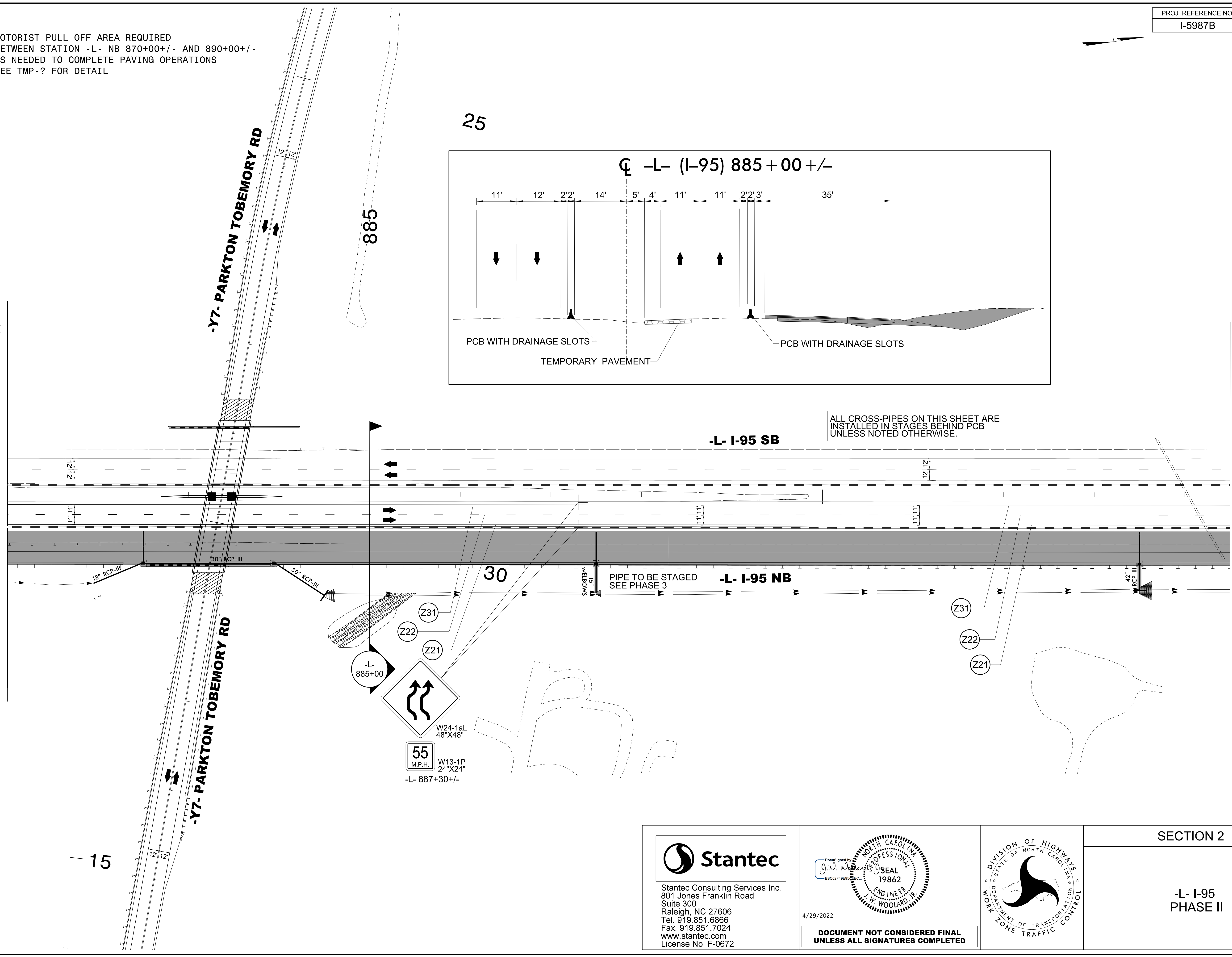


MOTORIST PULL OFF AREA REQUIRED
 BETWEEN STATION -L- NB 870+00+/- AND 890+00+/-
 AS NEEDED TO COMPLETE PAVING OPERATIONS
 SEE TMP-? FOR DETAIL

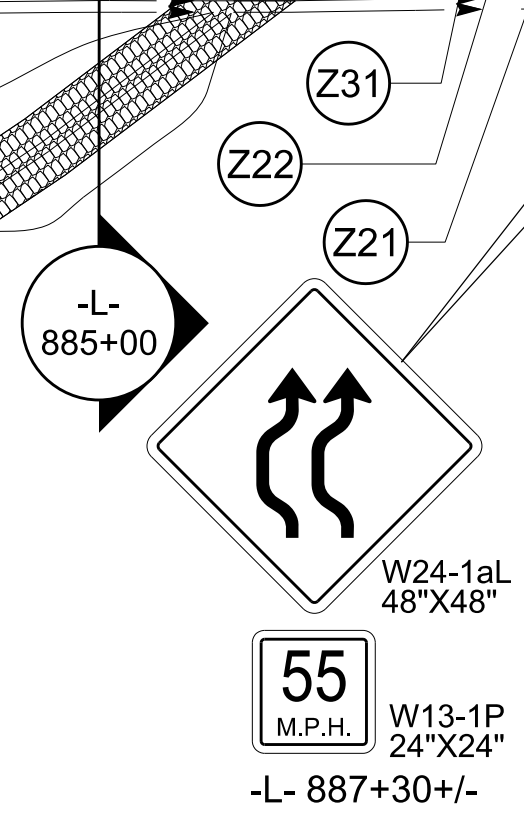
MATCHLINE -L- STA. 7881+00 SEE SHEET TMP-233

MATCHLINE -L- STA. 894+00 SEE SHEET TMP-235



ALL CROSS-PIPES ON THIS SHEET ARE
 INSTALLED IN STAGES BEHIND PCB
 UNLESS NOTED OTHERWISE.

PIPE TO BE STAGED
 SEE PHASE 3



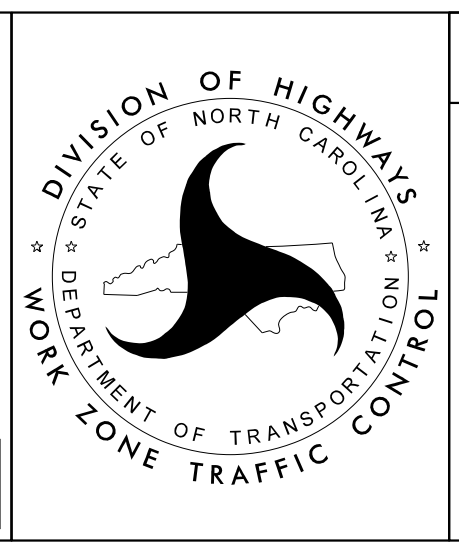
4/19/2022
 U:\Traffic\Transportation Management\Plan\TCP\PLAN SHEETS\I-5987B_TMP-234_PHASE 2.dgn
 angood

Stantec
 Stantec Consulting Services Inc.
 801 Jones Franklin Road
 Suite 300
 Raleigh, NC 27606
 Tel. 919.851.6866
 Fax. 919.851.7024
 www.stantec.com
 License No. F-0672

DocuSigned by:
 J.W. Woollard, Jr.
 PROFESSIONAL
 SEAL
 19862
 ENGINEER
 J.W. WOOLLARD, JR.

4/29/2022

**DOCUMENT NOT CONSIDERED FINAL
 UNLESS ALL SIGNATURES COMPLETED**



SECTION 2

-L- I-95
 PHASE II