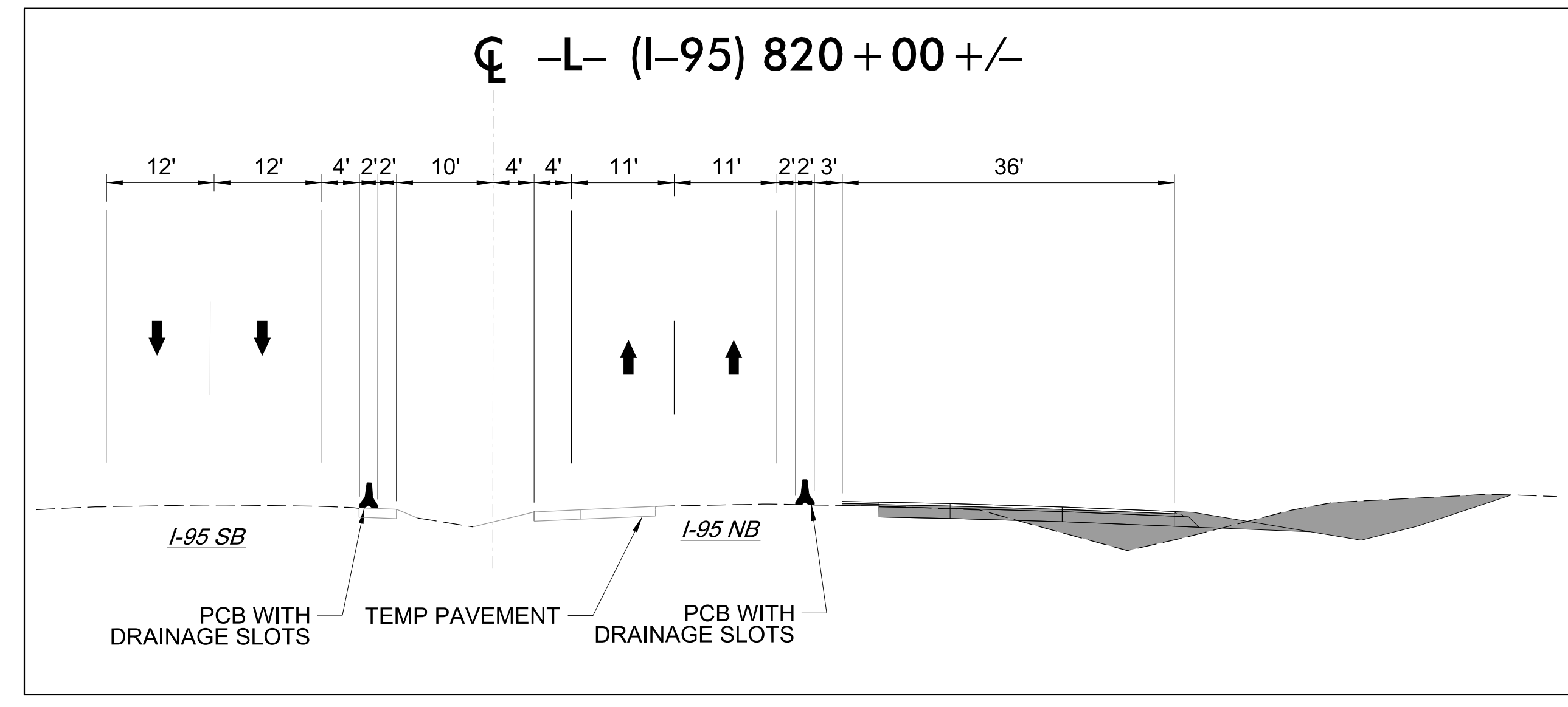
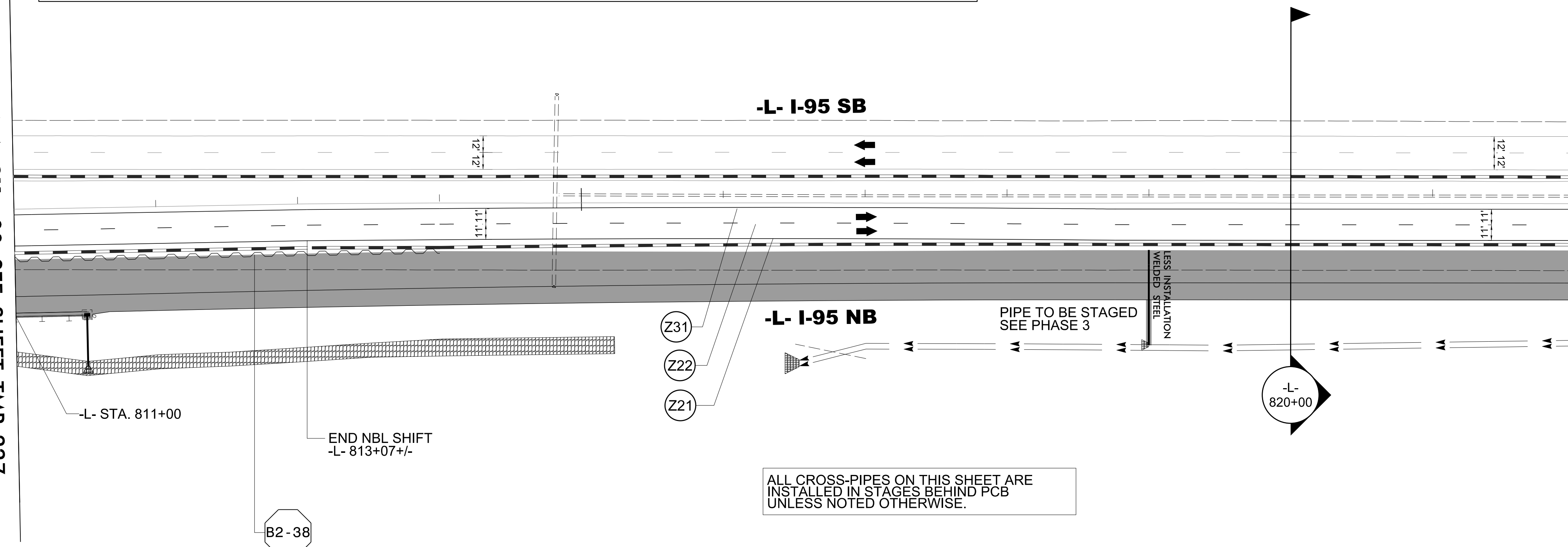


MOTORIST PULL OFF AREA REQUIRED  
 BETWEEN STATION -L- NB 820+00+/- AND 840+00+/-  
 AS NEEDED TO COMPLETE PAVING OPERATIONS  
 SEE TMP-2A-1 FOR DETAIL



MATCHLINE -L- STA. 811+00 SEE SHEET TMP-227

MATCHLINE -L- STA. 822+00 SEE SHEET TMP-229



ALL CROSS-PIPES ON THIS SHEET ARE  
 INSTALLED IN STAGES BEHIND PCB  
 UNLESS NOTED OTHERWISE.

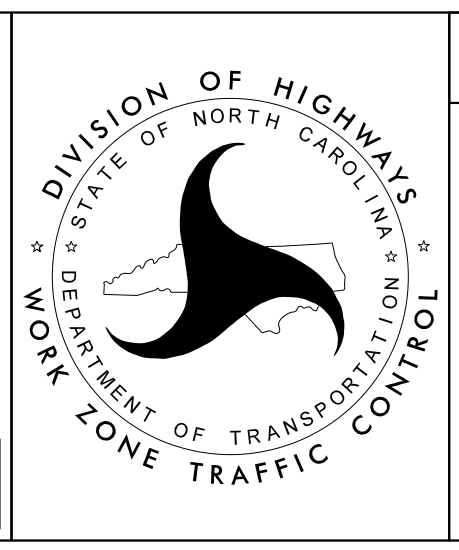
**B2-38** QUANTITY = 2646 SF  
 TEMPORARY SHORING ON -L-  
 FROM 808+60+/- (33.0'RT) TO 814+00+/- (33.0'RT)  
 (SEE SHEET TMP-2TS14 FOR  
 TEMPORARY SHORING NOTES)

4/19/2022  
 U:\Traffic\Transportation Management Plan\TCP\PLAN SHEETS\I-5987B\_TMP-228\_PHASE 2.dgn  
 angood

Stantec Consulting Services Inc.  
 801 Jones Franklin Road  
 Suite 300  
 Raleigh, NC 27606  
 Tel. 919.851.6866  
 Fax. 919.851.7024  
 www.stantec.com  
 License No. F-0672

4/29/2022

**DOCUMENT NOT CONSIDERED FINAL  
 UNLESS ALL SIGNATURES COMPLETED**



SECTION 2

-L- I-95  
 PHASE II