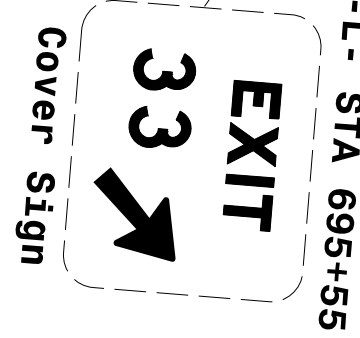
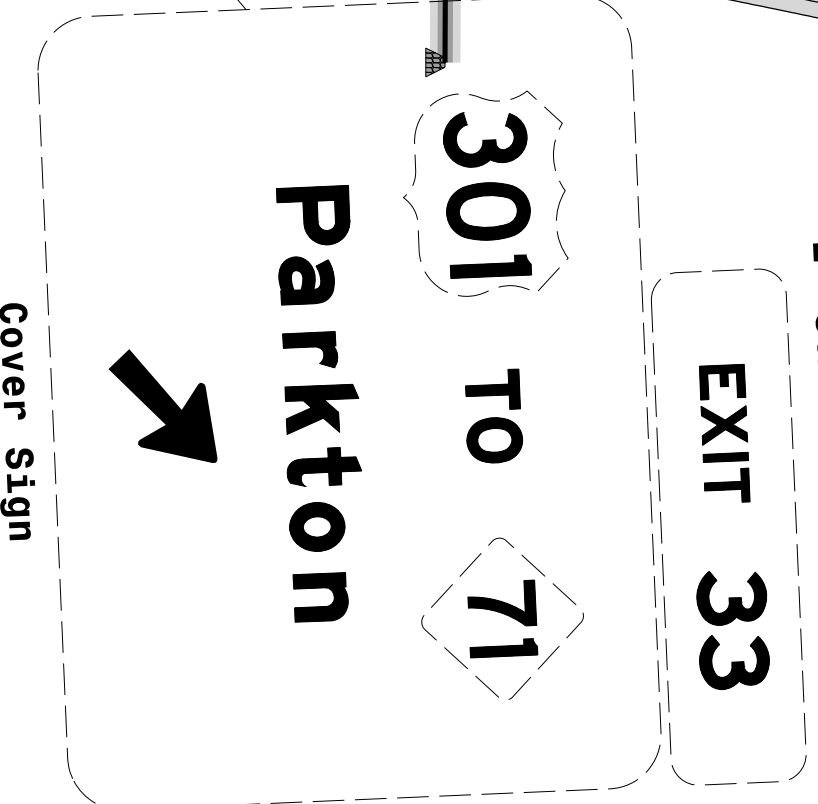
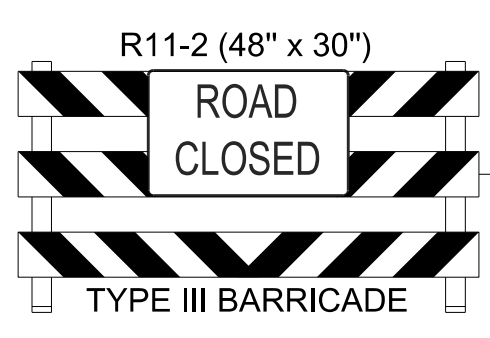


SEE SHEET TMP-169A FOR CROSS SECTION DETAILS

SEE SHEET TMP-2D15 FOR OFF-SITE DETOUR

I-95 NORTHBOUND NOTE:
ALL ADVANCE SIGNS FOR EXIT 33 SHALL BE COVERED WHILE RAMP IS CLOSED



MATCHLINE -Y1BRPB STA. 19+00 SEE SHEET TMP-168

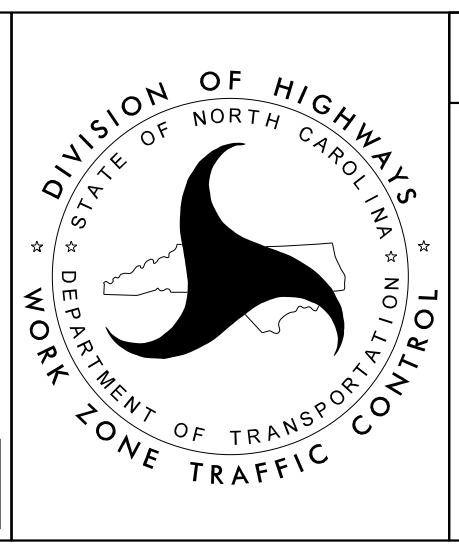
MATCHLINE -Y1BRPC STA. 23+00 SEE SHEET TMP-168

3/15/2022
U:\Traffic\Transportation Management\Plan\TCP\PLAN SHEETS\I-5987B_TMP_169_PHASE 1\STEP 2C.dgn
angood

Stantec Consulting Services Inc.
801 Jones Franklin Road
Suite 300
Raleigh, NC 27606
Tel. 919.851.6866
Fax. 919.851.7024
www.stantec.com
License No. F-0672

DocuSigned by
J.W. Woolard
4/29/2022

**DOCUMENT NOT CONSIDERED FINAL
UNLESS ALL SIGNATURES COMPLETED**



SECTION 2

-Y1B- US-301
PHASE I
STEP 2C