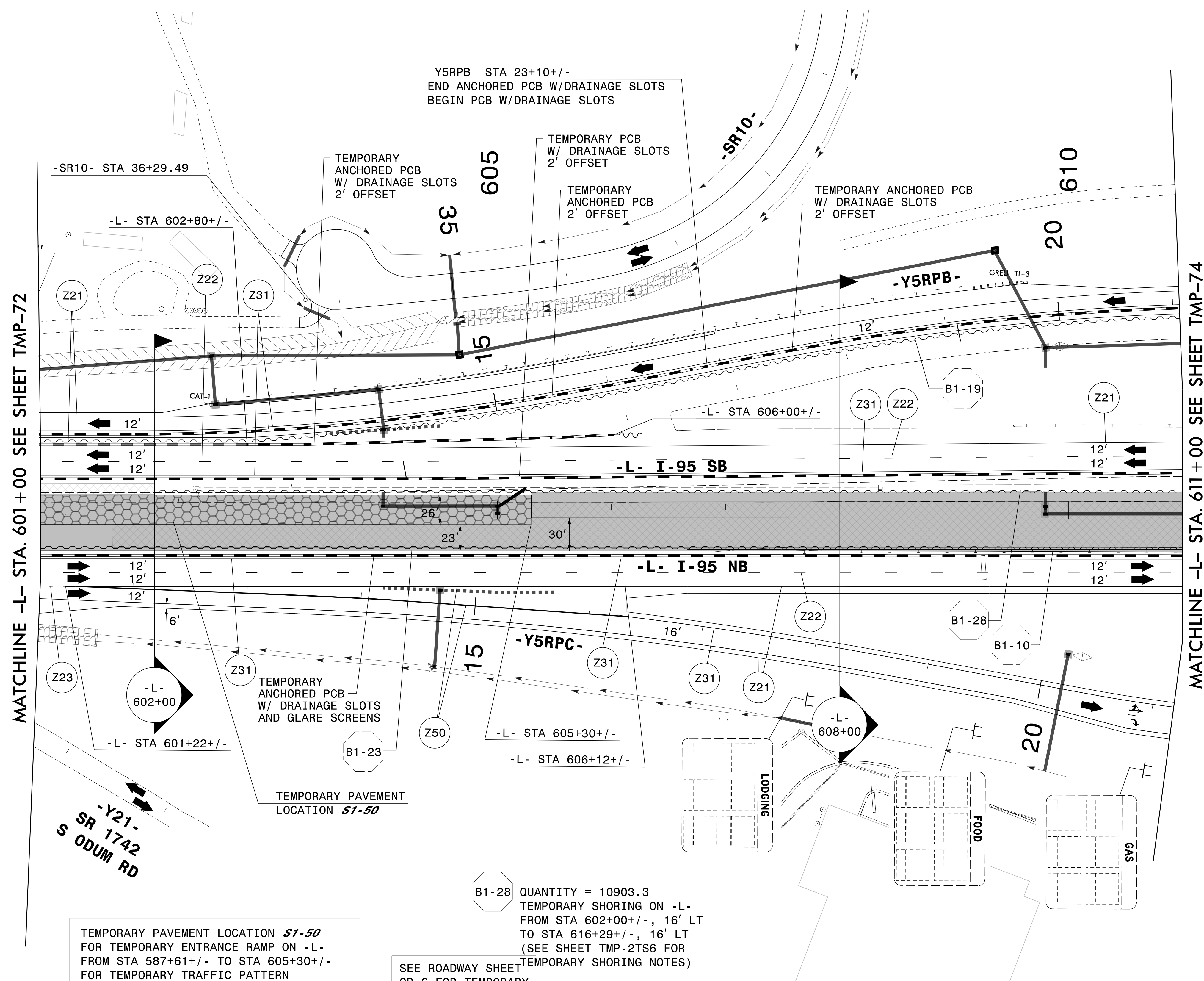
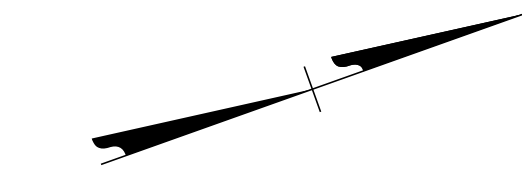


PLANS PREPARED FOR THE NCDOT BY:
M MOTT MACDONALD I & E, LLC
 1101 HAYNES STREET, SUITE 101
 RALEIGH, NC 27604
M MOTT MACDONALD NC LICENSE NO. F-0669



MATCHLINE -L- STA. 601+00 SEE SHEET TMP-72

MATCHLINE -L- STA. 611+00 SEE SHEET TMP-74

TEMPORARY PAVEMENT LOCATION **S1-50**
 FOR TEMPORARY ENTRANCE RAMP ON -L-
 FROM STA 587+61+/- TO STA 605+30+/-
 FOR TEMPORARY TRAFFIC PATTERN
 (45773 SF)

SEE ROADWAY SHEET
 2B-6 FOR TEMPORARY
 DRAINAGE

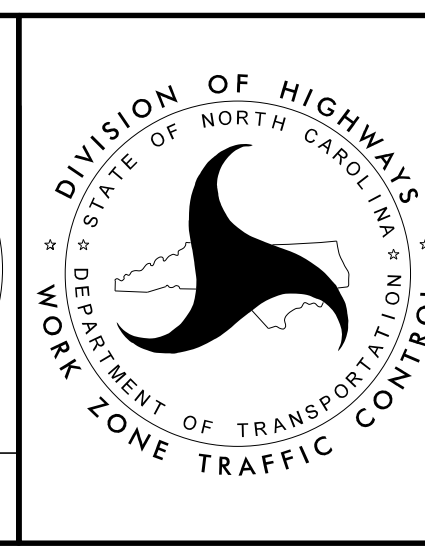
SEE SHEET TMP-73A
 FOR SECTIONS

B1-28 QUANTITY = 10903.3
 TEMPORARY SHORING ON -L-
 FROM STA 602+00+/-, 16' LT
 TO STA 616+29+/-, 16' LT
 (SEE SHEET TMP-2TS6 FOR
 TEMPORARY SHORING NOTES)

DocuSigned by:
 APPROVED: *Lois D. Stouckio*
 AF571AAAF411

DATE: _____

**DOCUMENT NOT CONSIDERED FINAL
 UNLESS ALL SIGNATURES COMPLETED**



SECTION 1

TEMPORARY TRAFFIC CONTROL
 PHASE III

3/29/2022
 G:\50100191\NV5_1-5987B\TrafficControl\Twp\200_363_1-5987B-TMP-73_Phase III.dgn
 User:ST086227