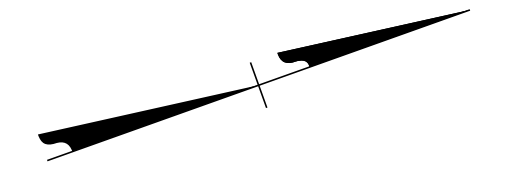
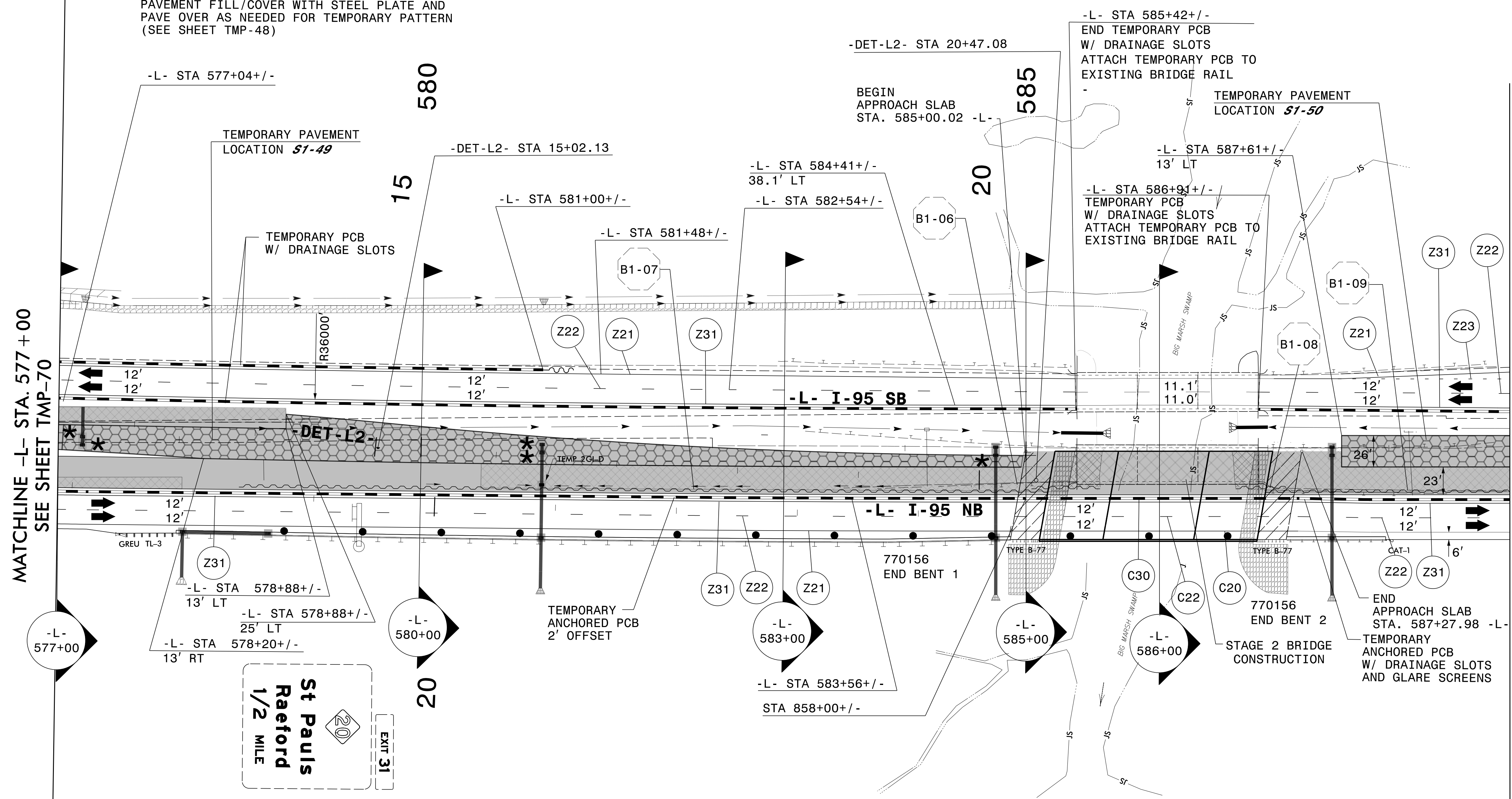


PLANS PREPARED FOR THE NCDOT BY:
M MOTT MACDONALD I & E, LLC
 1101 HAYNES STREET, SUITE 101
 RALEIGH, NC 27604
M MOTT MACDONALD
 NC LICENSE NO. F-0669



* PARTIALLY CONSTRUCT DRAINAGE STRUCTURE TO AN ELEVATION BELOW THE TEMPORARY PAVEMENT FILL/COVER WITH STEEL PLATE AND PAVE OVER AS NEEDED FOR TEMPORARY PATTERN (SEE SHEET TMP-48)



MATCHLINE -L- STA. 577+00
SEE SHEET TMP-70

MATCHLINE -L- STA. 589+00 SEE SHEET TMP-72

TEMPORARY PAVEMENT LOCATION **S1-49**
 FOR TEMPORARY CROSSOVER ON -L-
 FROM STA 574+63+/- TO STA 585+00+/-
 FOR TEMPORARY TRAFFIC PATTERN
 (20,785 SF)

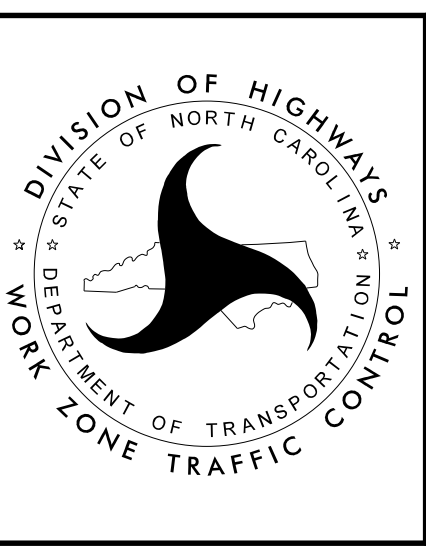
TEMPORARY PAVEMENT LOCATION **S1-50**
 FOR TEMPORARY ENTRANCE RAMP ON -L-
 FROM STA 587+61+/- TO STA 605+30+/-
 FOR TEMPORARY TRAFFIC PATTERN
 (45773 SF)

SEE SHEETS TMP-71A
AND TMP-71B
FOR SECTIONS

DocuSigned by:
 APPROVED: *Lori D. Stouchko*
 AF571AAFF411

DATE: _____

**DOCUMENT NOT CONSIDERED FINAL
UNLESS ALL SIGNATURES COMPLETED**



SECTION 1

TEMPORARY TRAFFIC CONTROL
PHASE III

3/29/2022
 G:\50100191\NV5_1-5987B\TrafficControl\Tc\200_353_1-5987B-TMP-71_L_Phase III.dwg
 User:ST086227