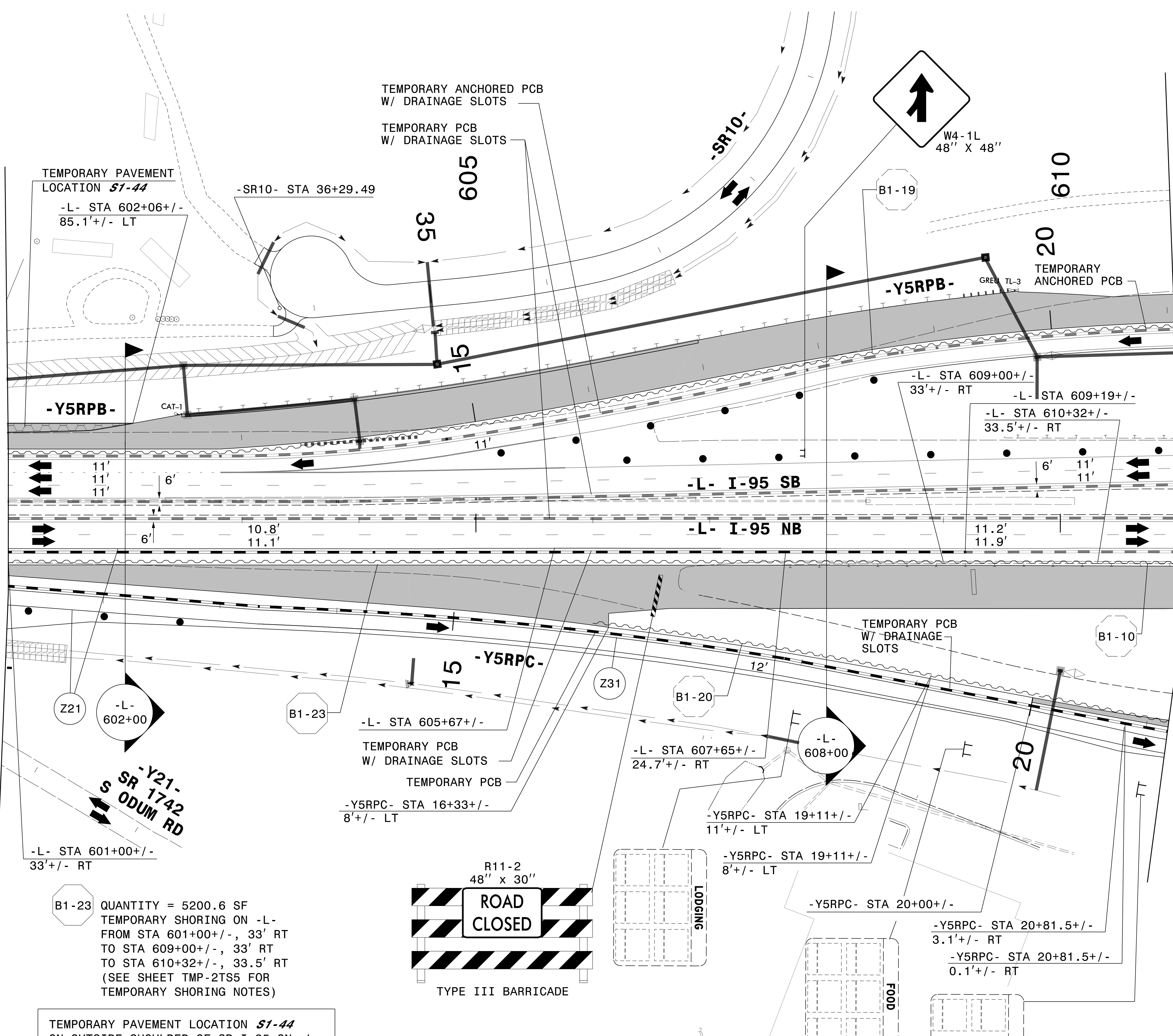


PLANS PREPARED FOR THE NCDOT BY:

M MOTT MACDONALD I & E, LLC
 1101 HAYNES STREET, SUITE 101
 RALEIGH, NC 27604
M MOTT MACDONALD NC LICENSE NO. F-0669

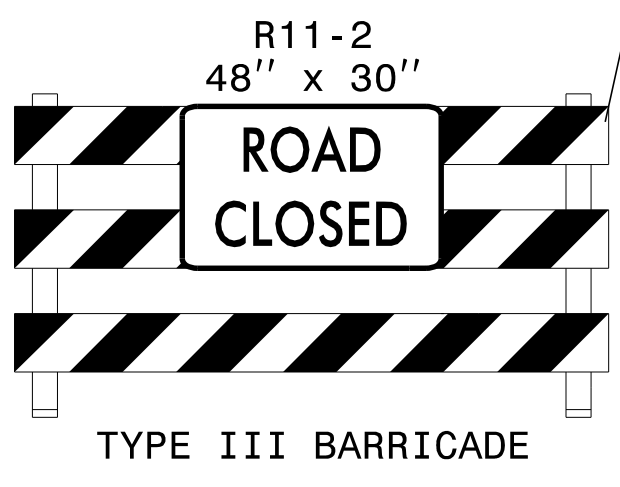
MATCHLINE -L- STA. 601+00 SEE SHEET TMP-54

MATCHLINE -L- STA. 611+00 SEE SHEET TMP-56

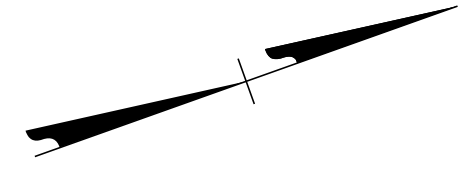


B1-23 QUANTITY = 5200.6 SF
 TEMPORARY SHORING ON -L-
 FROM STA 601+00+/-, 33' RT
 TO STA 609+00+/-, 33' RT
 TO STA 610+32+/-, 33.5' RT
 (SEE SHEET TMP-2TS5 FOR
 TEMPORARY SHORING NOTES)

TEMPORARY PAVEMENT LOCATION **51-44**
 ON OUTSIDE SHOULDER OF SB I-95 ON -L-
 FROM STA 596+00+/- TO STA 602+07+/-
 FOR TEMPORARY TRAFFIC PATTERN
 (3,706 SF)



SEE SHEET TMP-55A
 FOR SECTIONS



3/28/2022
 G:\50100191\NV5_1-5987B\TrafficControl\TcP\200_297_1-5987B-TMP-55_Phase II_Step 2_13.dgn
 User:ST086227

DocuSigned by:
 APPROVED: *Lori D. Stouchko*
 AF571AAFF411
 DATE: _____



SECTION 1
 TEMPORARY TRAFFIC CONTROL
 PHASE II, STEP 2

DOCUMENT NOT CONSIDERED FINAL
 UNLESS ALL SIGNATURES COMPLETED