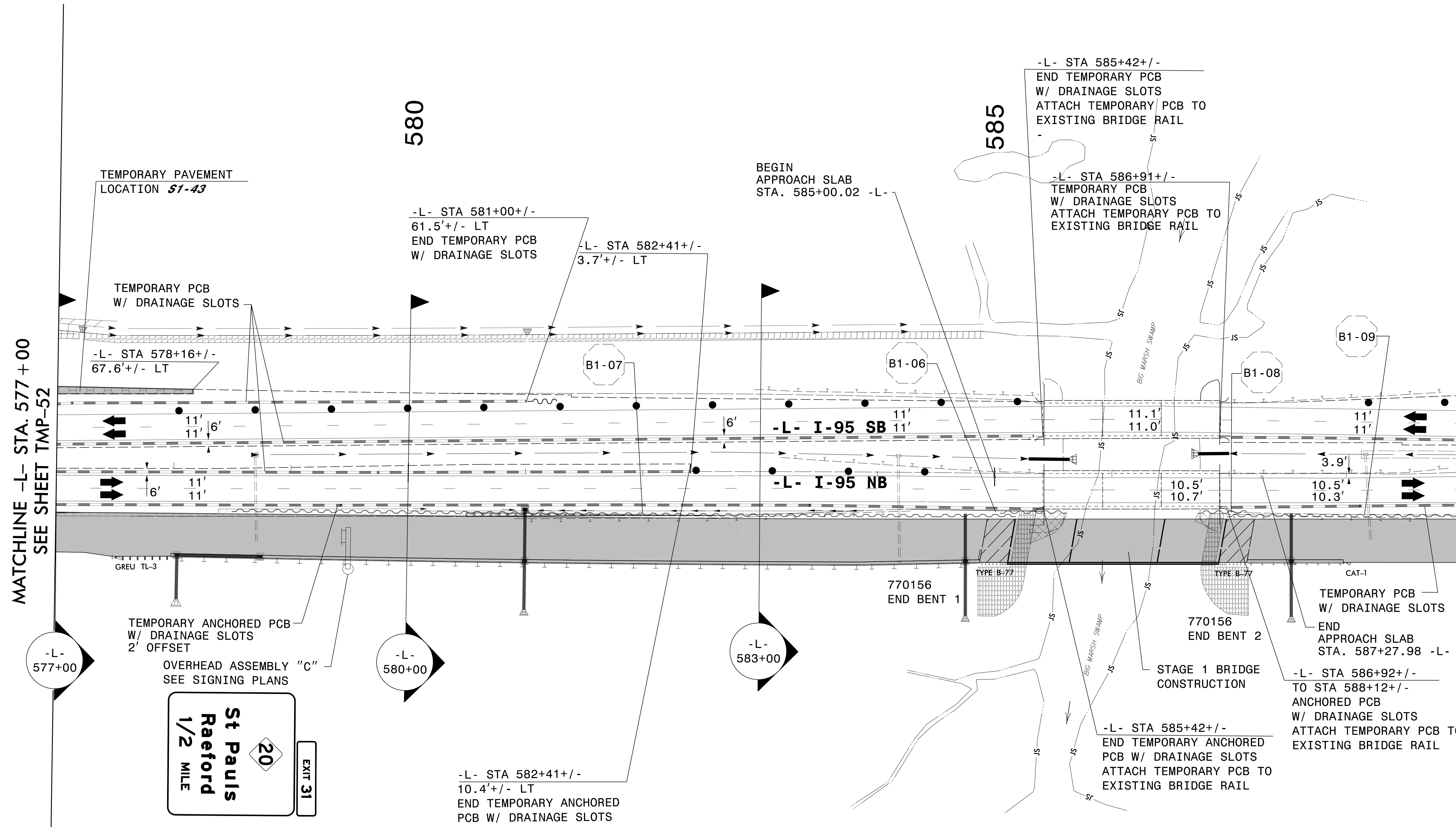
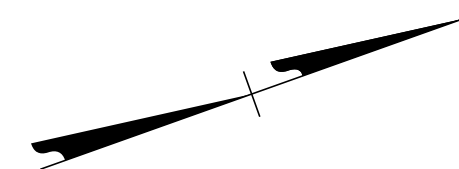


PLANS PREPARED FOR THE NCDOT BY:

M MOTT MACDONALD I & E, LLC
 1101 HAYNES STREET, SUITE 101
 RALEIGH, NC 27604
M MOTT MACDONALD NC LICENSE NO. F-0669



MATCHLINE -L- STA. 577 + 00
SEE SHEET TMP-52

MATCHLINE -L- STA. 589 + 00 SEE SHEET TMP-54

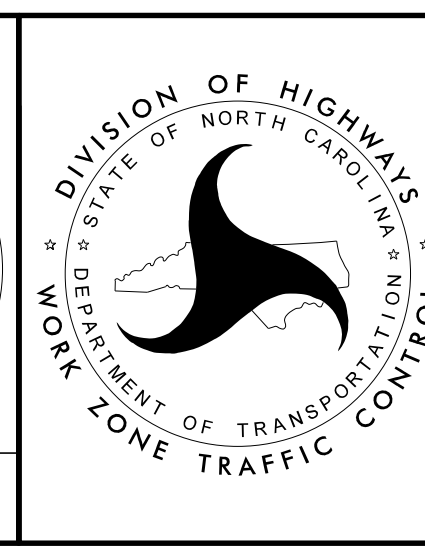
TEMPORARY PAVEMENT LOCATION **S1-43**
 ON OUTSIDE SHOULDER OF SB I-95 ON -L-
 FROM STA 574+80+/- TO STA 578+16+/-
 FOR TEMPORARY TRAFFIC PATTERN
 (2696 SF)

SEE SHEET TMP-53A
FOR SECTIONS

3/28/2022
 G:\50100191\NV5_1-5987B\TrafficControl\Tep\200_289_1-5987B-TMP-53_Phase II.dgn
 User:ST086227

APPROVED: *Lois D. Stouchko*
 DATE: _____

**DOCUMENT NOT CONSIDERED FINAL
 UNLESS ALL SIGNATURES COMPLETED**



SECTION 1

**TEMPORARY TRAFFIC CONTROL
 PHASE II, STEP 2**