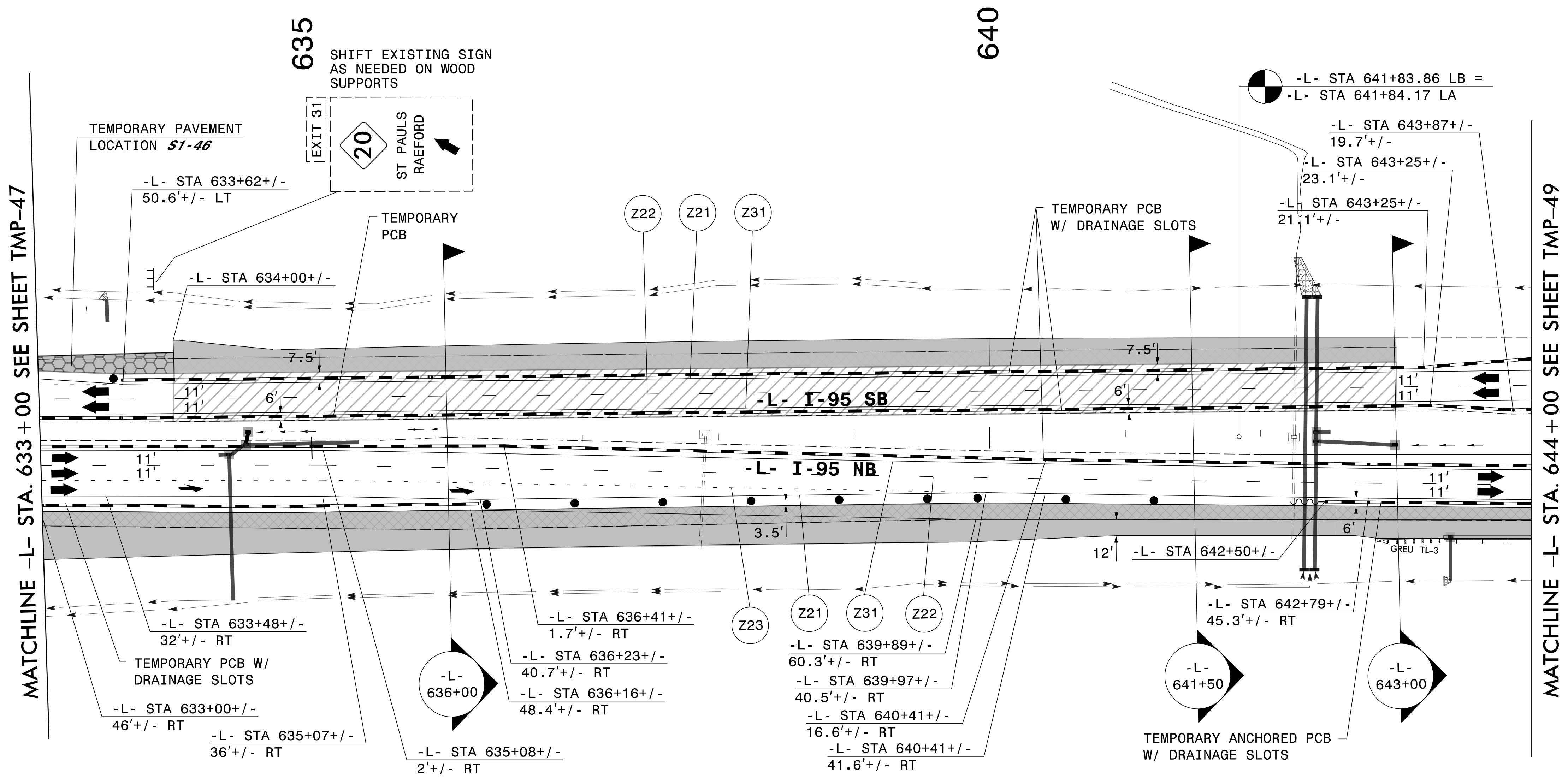
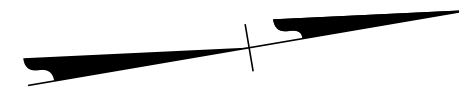


PLANS PREPARED FOR THE NCDOT BY:

M MOTT MACDONALD I & E, LLC
 1101 HAYNES STREET, SUITE 101
 RALEIGH, NC 27604
M MOTT MACDONALD NC LICENSE NO. F-0669



MATCHLINE -L- STA. 633+00 SEE SHEET TMP-47

MATCHLINE -L- STA. 644+00 SEE SHEET TMP-49

TEMPORARY PAVEMENT LOCATION **S1-46**
 ON OUTSIDE SHOULDER OF EXISTING -L-
 FROM STA 632+38+/- TO STA 634+00+/-
 FOR TEMPORARY TRAFFIC PATTERN
 (1936 SF)

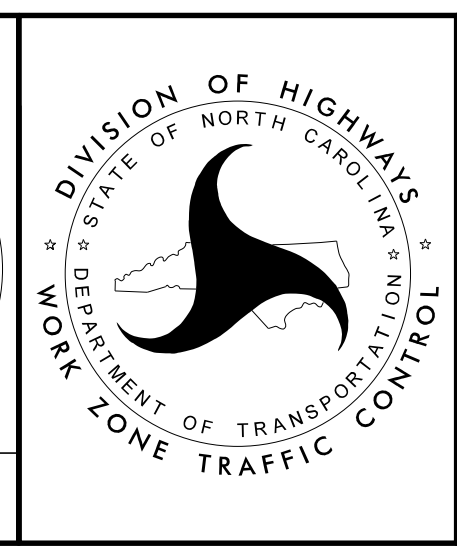
SEE SHEET TMP-48A
 FOR SECTIONS

3/28/2022
 G:\50100191\NV5_1-5987B\TrafficControl\Top\200_273_1-5987B-TMP-48_Phase II.dgn
 User:ST086227

DocuSigned by:
 APPROVED *Lori D. Stoucho*
 AF571AAAF411

DATE: _____

**DOCUMENT NOT CONSIDERED FINAL
 UNLESS ALL SIGNATURES COMPLETED**



SECTION 1

**TEMPORARY TRAFFIC CONTROL
 PHASE II**