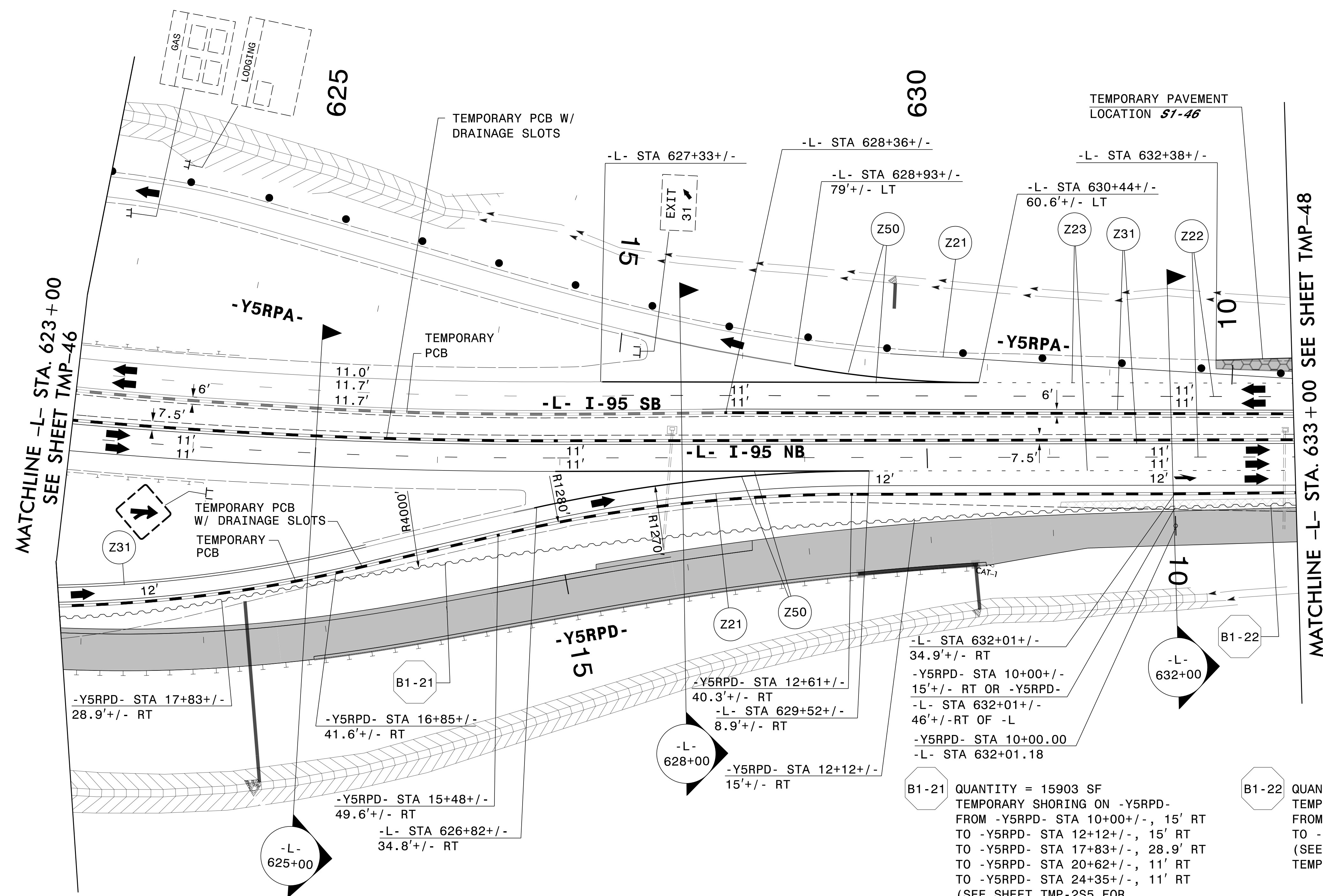
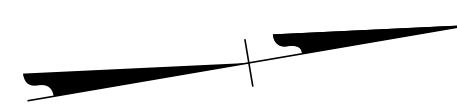


PLANS PREPARED FOR THE NCDOT BY:

**M** MOTT MACDONALD I & E, LLC  
 1101 HAYNES STREET, SUITE 101  
 RALEIGH, NC 27604  
**M** MOTT MACDONALD NC LICENSE NO. F-0669



MATCHLINE -L- STA. 623+00  
SEE SHEET TMP-46

MATCHLINE -L- STA. 633+00 SEE SHEET TMP-48

TEMPORARY PAVEMENT LOCATION **S1-46**  
 ON OUTSIDE SHOULDER OF EXISTING -L-  
 FROM STA 632+38+/- TO STA 634+00+/-  
 FOR TEMPORARY TRAFFIC PATTERN  
 (1936 SF)

SEE SHEET TMP-47A  
 FOR SECTIONS

B1-21 QUANTITY = 15903 SF  
 TEMPORARY SHORING ON -Y5RPD-  
 FROM -Y5RPD- STA 10+00+/-, 15' RT  
 TO -Y5RPD- STA 12+12+/-, 15' RT  
 TO -Y5RPD- STA 17+83+/-, 28.9' RT  
 TO -Y5RPD- STA 20+62+/-, 11' RT  
 TO -Y5RPD- STA 24+35+/-, 11' RT  
 (SEE SHEET TMP-2S5 FOR  
 TEMPORARY SHORING NOTES)

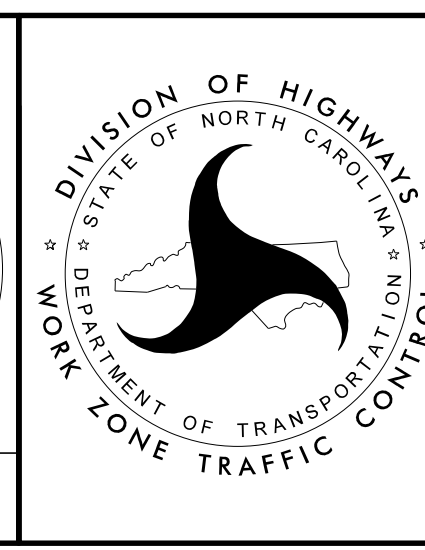
B1-22 QUANTITY = 212.9 SF  
 TEMPORARY SHORING ON -L-  
 FROM -L- STA 632+01+/-, 46' RT  
 TO -L- STA 633+00+/-, 46' RT  
 (SEE SHEET TMP-2S5 FOR  
 TEMPORARY SHORING NOTES)

3/28/2022  
 G:\50100191\NV5\_1-5987B\TrafficControl\Twp\200\_269\_1-5987B-TMP-47\_Phase II.dgn  
 User:ST086227

APPROVED: *Lois D. Stouchko*  
AF5711AAFF6411

DATE: \_\_\_\_\_

**DOCUMENT NOT CONSIDERED FINAL  
 UNLESS ALL SIGNATURES COMPLETED**



**SECTION 1**

**TEMPORARY TRAFFIC CONTROL  
 PHASE II**