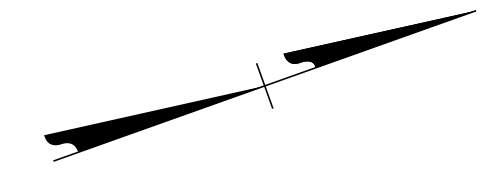
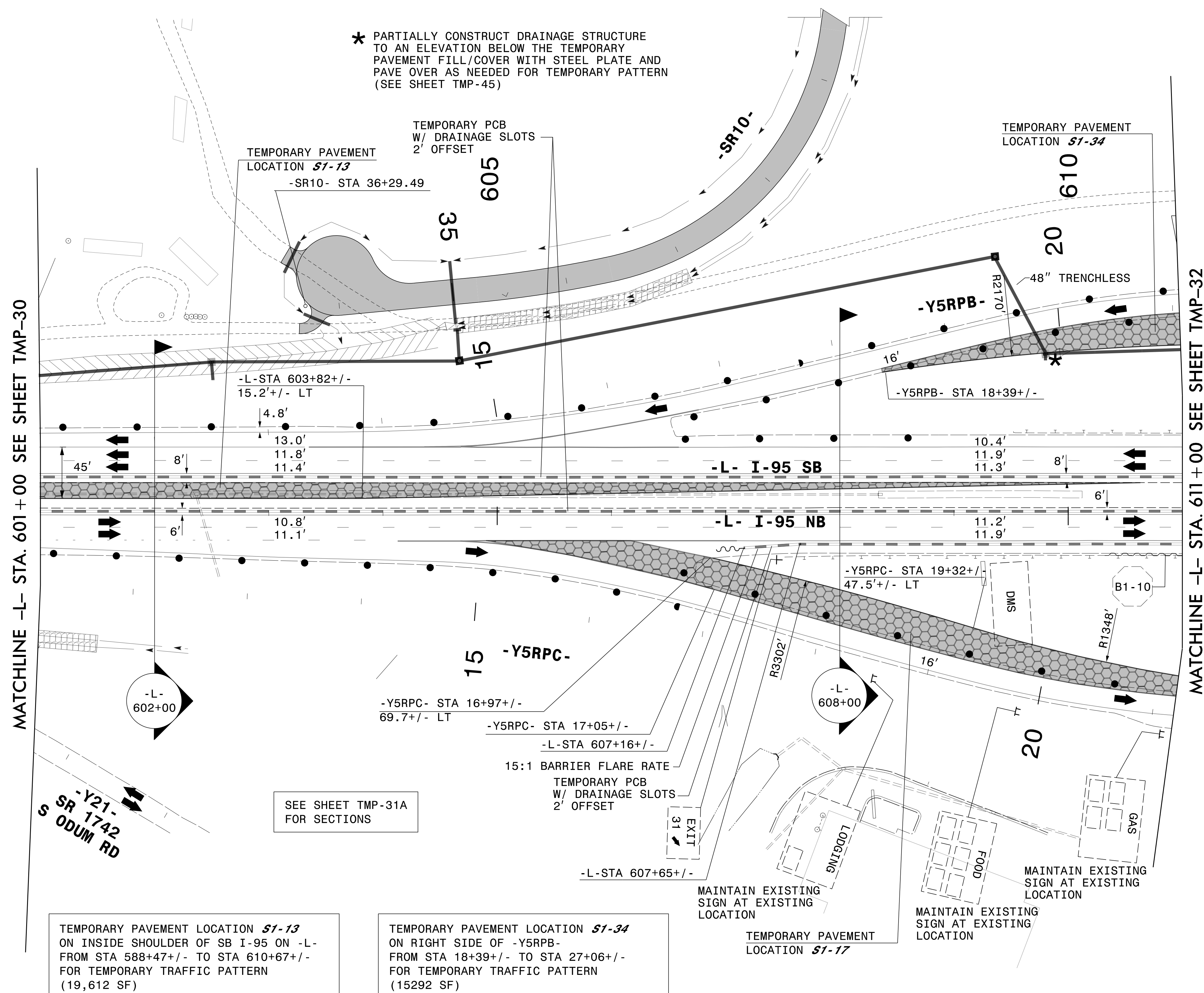


PLANS PREPARED FOR THE NCDOT BY:

M MOTT MACDONALD I & E, LLC
 1101 HAYNES STREET, SUITE 101
 RALEIGH, NC 27604
M MOTT MACDONALD NC LICENSE NO. F-0669



* PARTIALLY CONSTRUCT DRAINAGE STRUCTURE TO AN ELEVATION BELOW THE TEMPORARY PAVEMENT FILL/COVER WITH STEEL PLATE AND PAVE OVER AS NEEDED FOR TEMPORARY PATTERN (SEE SHEET TMP-45)



MATCHLINE -L- STA. 601 + 00 SEE SHEET TMP-30

MATCHLINE -L- STA. 611 + 00 SEE SHEET TMP-32

TEMPORARY PAVEMENT LOCATION **S1-13**
 ON INSIDE SHOULDER OF SB I-95 ON -L-
 FROM STA 588+47+/- TO STA 610+67+/-
 FOR TEMPORARY TRAFFIC PATTERN
 (19,612 SF)

TEMPORARY PAVEMENT LOCATION **S1-17**
 ON LEFT SIDE OF -Y5RPC-
 FROM STA 14+74+/- TO STA 23+47+/-
 FOR TEMPORARY TRAFFIC PATTERN
 (16,851 SF)

TEMPORARY PAVEMENT LOCATION **S1-34**
 ON RIGHT SIDE OF -Y5RPB-
 FROM STA 18+39+/- TO STA 27+06+/-
 FOR TEMPORARY TRAFFIC PATTERN
 (15292 SF)

SEE SHEET TMP-31A
 FOR SECTIONS

MAINTAIN EXISTING
 SIGN AT EXISTING
 LOCATION

MAINTAIN EXISTING
 SIGN AT EXISTING
 LOCATION

MAINTAIN EXISTING
 SIGN AT EXISTING
 LOCATION

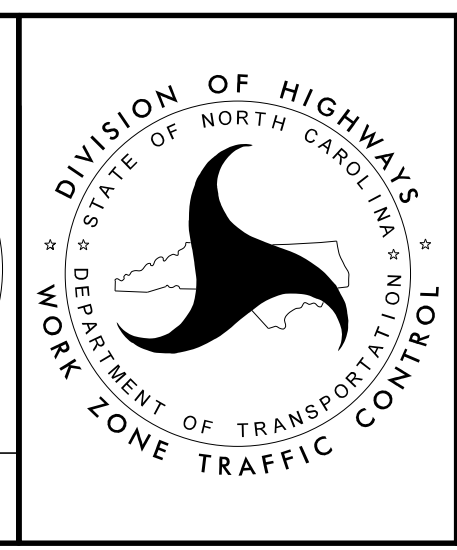
3/28/2022 G:\50100191\NV5_L-5987B\TrafficControl\Top\200_197_L-5987B-TMP-31_Phase 1_Step 3_13.dgn User:ST086227

DocuSigned by:
 APPROVED: *Lois D. Stoucho*
 AF571AAFF411

DATE: _____

SEAL
 034437
 ENGINEER
 LOIS D. STOUCHE

DOCUMENT NOT CONSIDERED FINAL
 UNLESS ALL SIGNATURES COMPLETED



SECTION 1

TEMPORARY TRAFFIC CONTROL
 PHASE I, STEP 3