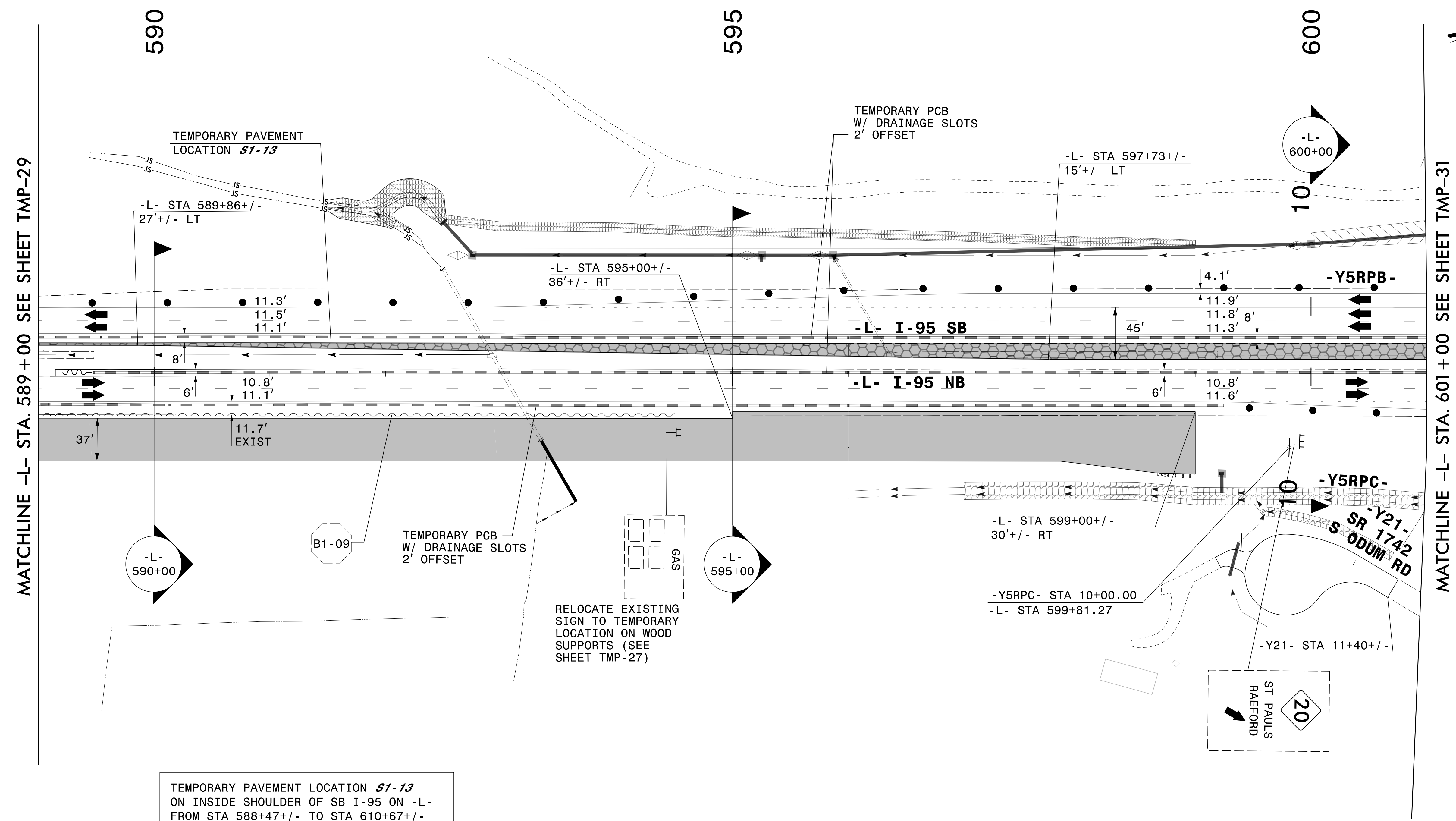
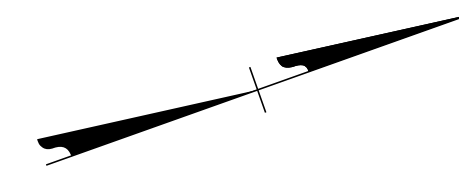


PLANS PREPARED FOR THE NCDOT BY:

M MOTT MACDONALD I & E, LLC
 1101 HAYNES STREET, SUITE 101
 RALEIGH, NC 27604
M MOTT MACDONALD
 NC LICENSE NO. F-0669



MATCHLINE -L- STA. 589 + 00 SEE SHEET TMP-29

MATCHLINE -L- STA. 601 + 00 SEE SHEET TMP-31

TEMPORARY PAVEMENT LOCATION 51-13
 ON INSIDE SHOULDER OF SB I-95 ON -L-
 FROM STA 588+47+/- TO STA 610+67+/-
 FOR TEMPORARY TRAFFIC PATTERN
 (19,612 SF)

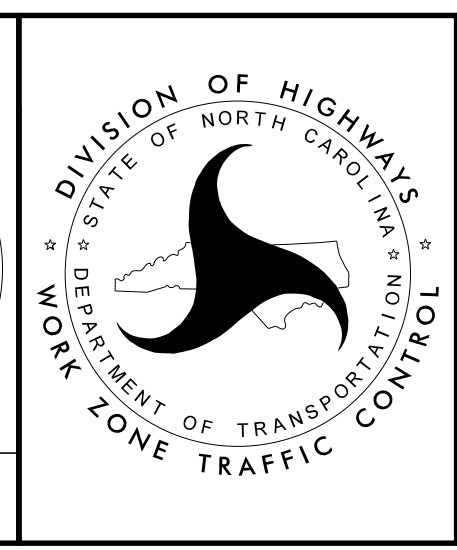
RELOCATE EXISTING
 SIGN TO TEMPORARY
 LOCATION ON WOOD
 SUPPORTS (SEE
 SHEET TMP-27)

SEE SHEET TMP-30A
 FOR SECTIONS

APPROVED: *Lori D. Stouchko*
AF571AAAF411

DATE: _____

**DOCUMENT NOT CONSIDERED FINAL
 UNLESS ALL SIGNATURES COMPLETED**



SECTION 1

TEMPORARY TRAFFIC CONTROL
 PHASE I, STEP 3

3/28/2022
 G:\50100191\NV5_1-5987B\TrafficControl\Tc\200_193_1-5987B_TMP-30_Phase 1 Step 3_12.dgn
 User:ST086227