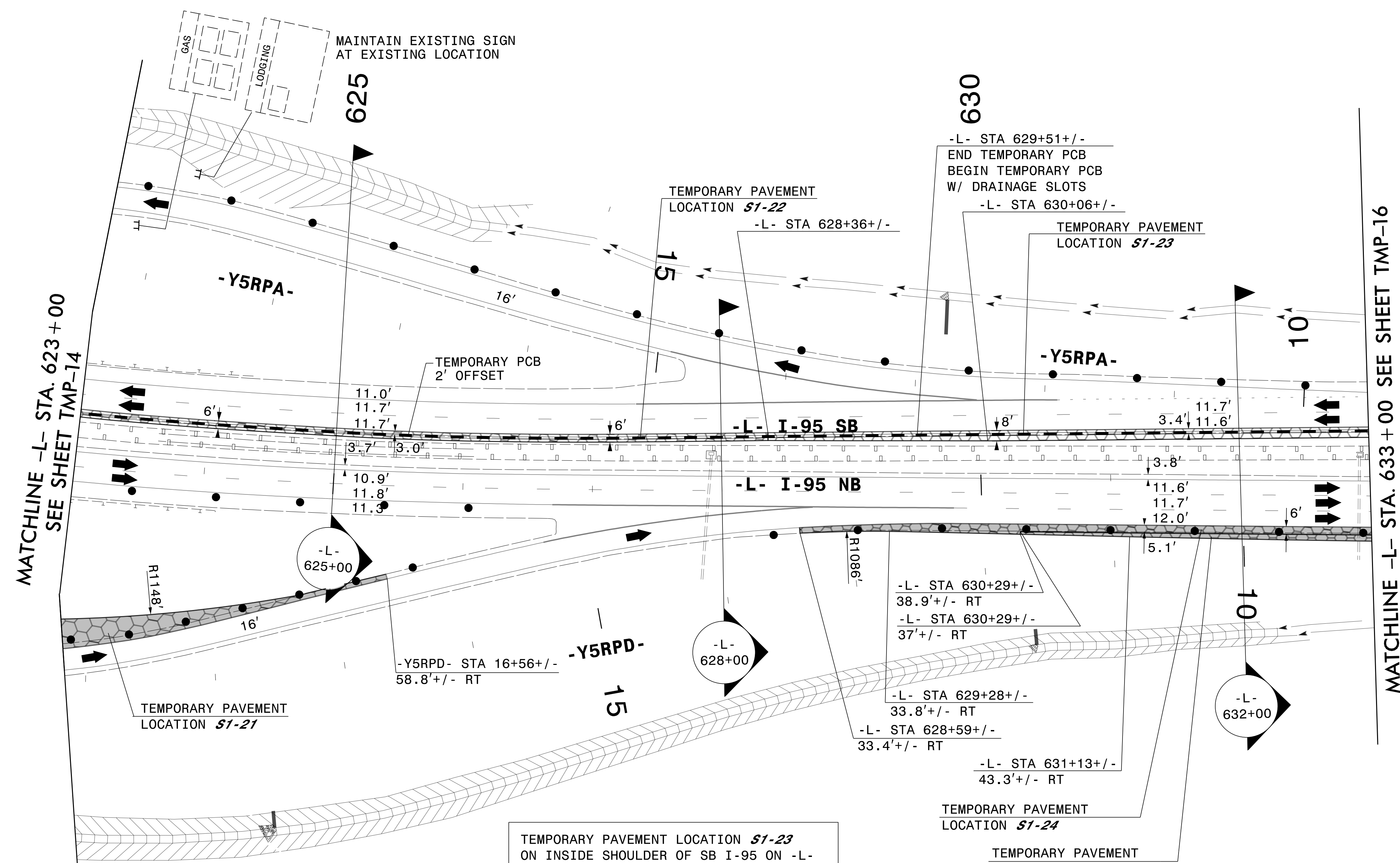
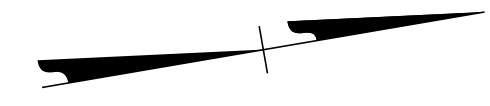


PLANS PREPARED FOR THE NCDOT BY:

**M** MOTT MACDONALD I & E, LLC  
 1101 HAYNES STREET, SUITE 101  
 RALEIGH, NC 27604  
**M** MOTT MACDONALD NC LICENSE NO. F-0669



MATCHLINE -L- STA. 623+00  
SEE SHEET TMP-14

MATCHLINE -L- STA. 633+00 SEE SHEET TMP-16

TEMPORARY PAVEMENT LOCATION **S1-21**  
 ON RIGHT SIDE OF -Y5RPD-  
 FROM STA 16+56+/- TO STA 25+31+/-  
 FOR TEMPORARY TRAFFIC PATTERN  
 (16,910 SF)

TEMPORARY PAVEMENT LOCATION **S1-22**  
 ON INSIDE SHOULDER OF SB I-95 ON -L-  
 FROM STA 620+64+/- TO STA 628+36+/-  
 FOR TEMPORARY PCB  
 (4,594 SF)

TEMPORARY PAVEMENT LOCATION **S1-23**  
 ON INSIDE SHOULDER OF SB I-95 ON -L-  
 FROM STA 628+36+/- TO STA 650+00+/-  
 FOR TEMPORARY TRAFFIC PATTERN  
 (17,008 SF)

TEMPORARY PAVEMENT LOCATION **S1-24**  
 ON OUTSIDE SHOULDER OF NB I-95 ON -L-  
 FROM STA 628+59+/- TO STA 650+00+/-  
 FOR TEMPORARY TRAFFIC PATTERN  
 (13,400 SF)

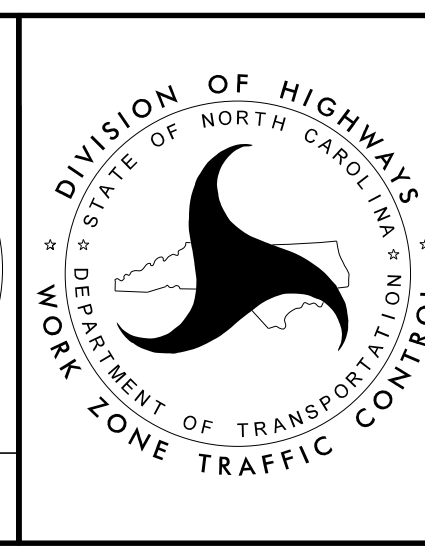
TEMPORARY PAVEMENT LOCATION **S1-25**  
 ON OUTSIDE SHOULDER OF NB I-95 ON -L-  
 FROM STA 630+29+/- TO STA 646+17+/-  
 FOR TEMPORARY TRAFFIC PATTERN  
 (7,787 SF)

SEE SHEET TMP-15A  
FOR SECTIONS

APPROVED: *Lois D. Stouchko*  
AF5711AAFF411

DATE: \_\_\_\_\_

**DOCUMENT NOT CONSIDERED FINAL  
UNLESS ALL SIGNATURES COMPLETED**



**SECTION 1**

**TEMPORARY TRAFFIC CONTROL  
PHASE I**

3/28/2022  
 G:\50100191\NV5\_L-5987B\TrafficControl\Tc\200\_147\_L-5987B\_TMP-15\_Phase I.dgn  
 User:ST086227